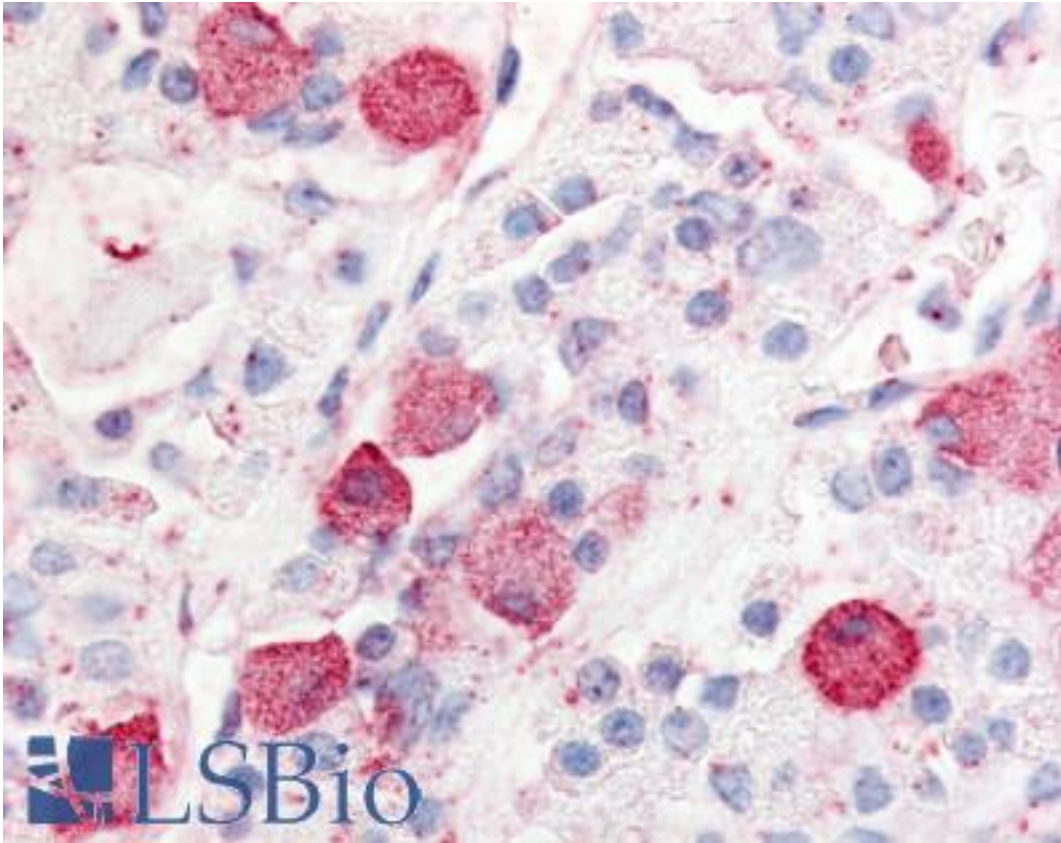


PRLHR / GPR10 Rabbit anti-Human Polyclonal (Extracellular Domain) Antibody - LS-A3825 - LSBio	
<b>CatalogID:</b>	LS-A3825
<b>Target:</b>	prolactin releasing hormone receptor (PRLHR)
<b>Synonyms:</b>	PRLHR Antibody, G protein-coupled receptor 10 Antibody, G-protein coupled receptor 10 Antibody, GPR10 Antibody, GR3 Antibody, HGR3 Antibody, PrRP receptor Antibody, PrRPR Antibody, Uhr-1 Antibody
<b>Family / Subfamily:</b>	GPCR / Releasing hormone
<b>Host</b>	PRLHR antibody was produced in Rabbit
<b>Clonality:</b>	Polyclonal
<b>Immunogen Species:</b>	PRLHR / GPR10 antibody was raised against Human
<b>Antigen Type:</b>	Synthetic peptide
<b>Immunogen:</b>	PRLHR / GPR10 antibody was raised against synthetic 18 amino acid peptide from 3rd extracellular domain of human PRLHR / GPR10. Percent identity with other species by BLAST analysis: Human, Gorilla, Dog, Bovine, Panda (100%); Monkey, Marmoset, Mouse, Rat, Pig (94%); Horse (89%).
<b>Specificity:</b>	Human PRLHR / GPR10. BLAST analysis of the peptide immunogen showed no homology with other human proteins.
<b>Epitope:</b>	Extracellular Domain
<b>Reactivity:</b>	Human, Gorilla, Bovine, Dog
<b>Predicted Reactivity:</b>	Monkey, Mouse, Rat, Pig
<b>Purification:</b>	Immunoaffinity purified
<b>Presentation:</b>	PBS, 0.1% sodium azide.
<b>Recommended Storage:</b>	Long term: -70°C; Short term: +4°C
<b>Usage Summary:</b>	Immunohistochemistry: LS-A3825 was validated for use in immunohistochemistry on a panel of 21 formalin-fixed, paraffin-embedded (FFPE) human tissues after heat induced antigen retrieval in pH 6.0 citrate buffer. After incubation with the primary antibody, slides were incubated with biotinylated secondary antibody, followed by alkaline phosphatase-streptavidin and chromogen. The stained slides were evaluated by a pathologist to confirm staining specificity. The optimal working concentration for LS-A3825 was determined to be 10 ug/ml.
<b>Uses:</b>	IHC - Paraffin (10 µg/ml) (Optimal dilution to be determined by the researcher)
<b>Size:</b>	50 µg
<b>Concentration:</b>	0.34 mg/ml

**Immunohistochemistry Image:**



Anti-PRLHR / GPR10 antibody LS-A3825 IHC staining of human anterior pituitary. Immunohistochemistry of formalin-fixed, paraffin-embedded tissue after heat-induced antigen retrieval.

**Requested From:**

Japan

Laboratory Reagent For In Vitro Research Use Only

Not for resale without prior written consent from LifeSpan BioSciences, Inc.

Created on 9/23/2014

© 2014 LifeSpan BioSciences