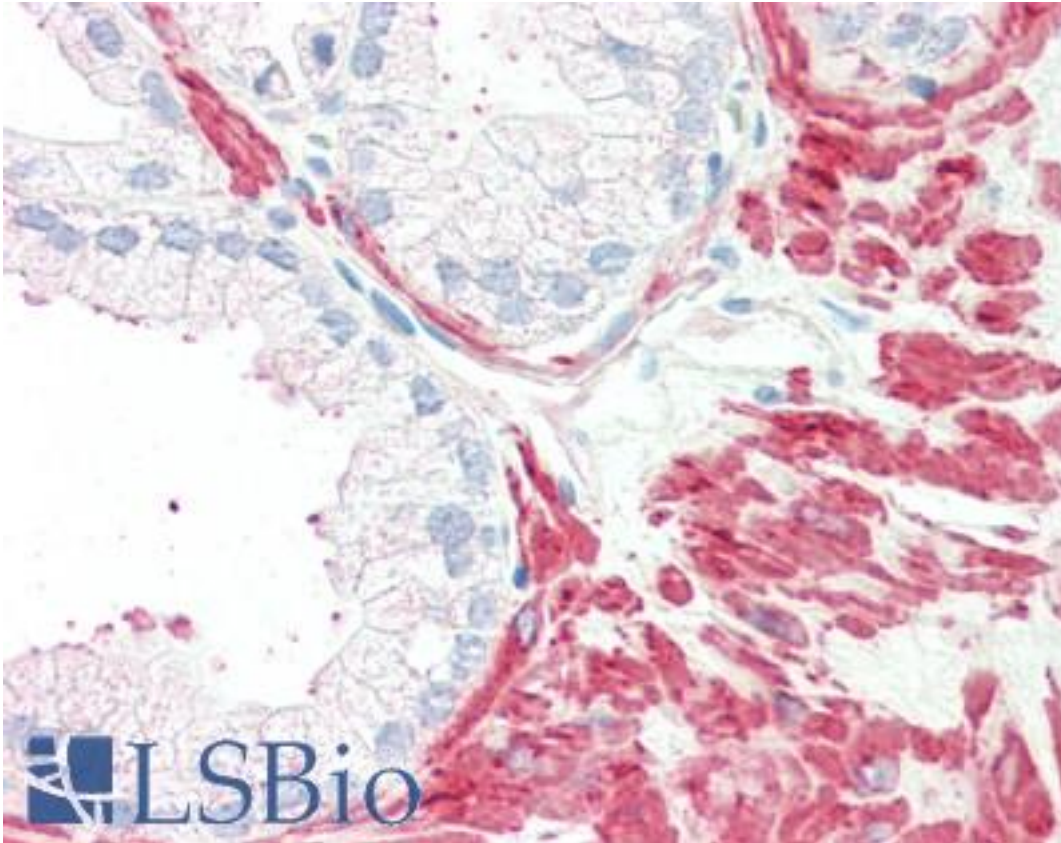


| MC5R / MC5 Receptor Rabbit anti-Human Polyclonal (Internal) Antibody - LS-A3805 - LSBio | |
|---|---|
| CatalogID: | LS-A3805 |
| Target: | melanocortin 5 receptor (MC5R) |
| Synonyms: | MC5R Antibody, HMC5R Antibody, MC2 Antibody, MC5-R Antibody, Melanocortin 5 receptor Antibody, MC5 Antibody, MC5 receptor Antibody, MC-2 Antibody, Melanocortin receptor 5 Antibody, Melanocortin-5 receptor Antibody |
| Family / Subfamily: | GPCR / Melanocortin |
| Host | MC5R antibody was produced in Rabbit |
| Clonality: | Polyclonal |
| Immunogen Species: | MC5R / MC5 Receptor antibody was raised against Human |
| Antigen Type: | Synthetic peptide |
| Immunogen: | MC5R / MC5 Receptor antibody was raised against synthetic 19 amino acid peptide from internal region of human MC5 Receptor. Percent identity with other species by BLAST analysis: Human, Chimpanzee, Gorilla, Monkey (100%); Marmoset, Mouse, Hamster, Panda (95%); Rabbit (89%); Rat, Dog, Bat, Opossum (84%). |
| Specificity: | Human MC5 Receptor. BLAST analysis of the peptide immunogen showed no homology with other human proteins. |
| Epitope: | Internal |
| Reactivity: | Human, Chimpanzee, Gorilla |
| Predicted Reactivity: | Monkey, Mouse, Hamster |
| Purification: | Immunoaffinity purified |
| Presentation: | PBS, 0.1% sodium azide. |
| Recommended Storage: | Long term: -70°C; Short term: +4°C |
| Usage Summary: | Immunohistochemistry: LS-A3805 was validated for use in immunohistochemistry on a panel of 21 formalin-fixed, paraffin-embedded (FFPE) human tissues after proteinase K antigen retrieval. After incubation with the primary antibody, slides were incubated with biotinylated secondary antibody, followed by alkaline phosphatase-streptavidin and chromogen. The stained slides were evaluated by a pathologist to confirm staining specificity. The optimal working concentration for LS-A3805 was determined to be 10 ug/ml. |
| Uses: | IHC - Paraffin (10 µg/ml) (Optimal dilution to be determined by the researcher) |
| Size: | 50 µg |
| Concentration: | 1 mg/ml |

Immunohistochemistry Image:



Anti-MC5 Receptor antibody LS-A3805 IHC of human prostate. Immunohistochemistry of formalin-fixed, paraffin-embedded tissue after heat-induced antigen retrieval.

Requested From:

Japan

Laboratory Reagent For In Vitro Research Use Only

Not for resale without prior written consent from LifeSpan BioSciences, Inc.

Created on 9/23/2014

© 2014 LifeSpan BioSciences