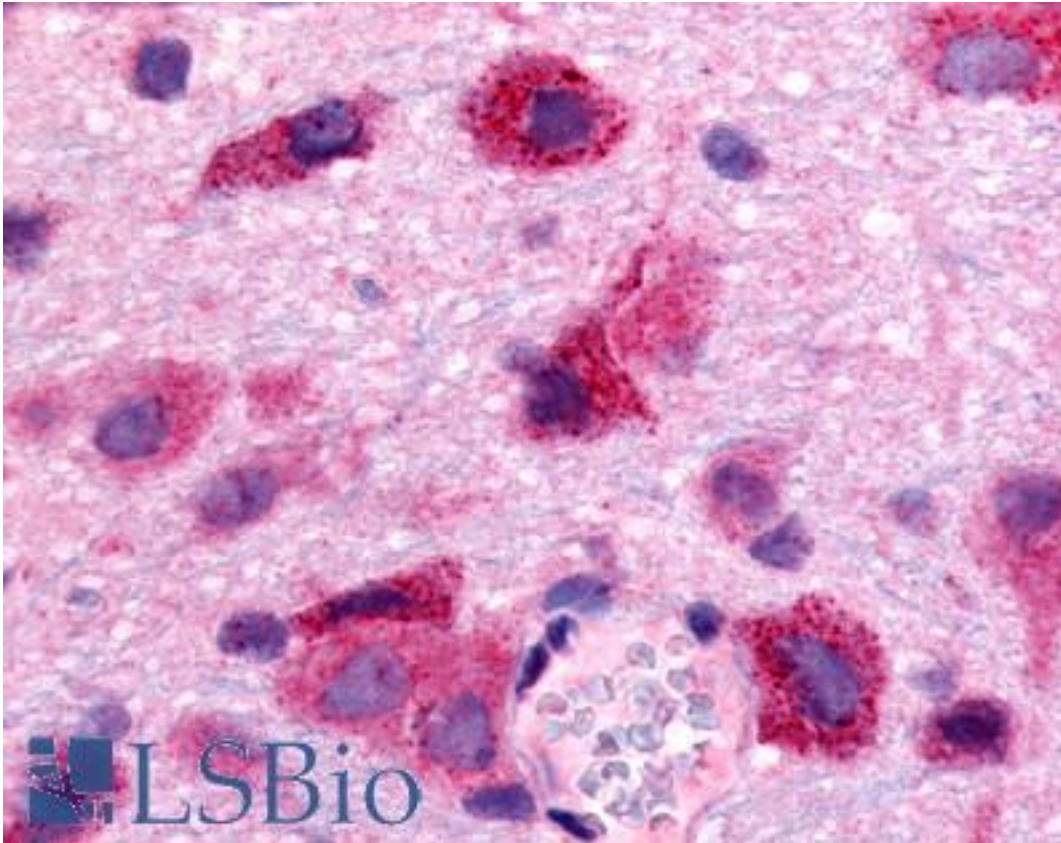


S1PR5 / EDG8 / S1P5 Rabbit anti-Human Polyclonal (N-Terminus) Antibody - LS-A3802 - LSBio	
<b>CatalogID:</b>	LS-A3802
<b>Target:</b>	sphingosine-1-phosphate receptor 5 (S1PR5)
<b>Synonyms:</b>	S1PR5 Antibody, EDG8 Antibody, Edg-8 Antibody, S1P receptor Edg-8 Antibody, S1P receptor 5 Antibody, S1P(5) receptor Antibody, S1P5 Antibody, SPPR-1 Antibody, SPPR-2 Antibody
<b>Family / Subfamily:</b>	GPCR / Lysophospholipid/Lyso sphingolipid
<b>Host</b>	S1PR5 antibody was produced in Rabbit
<b>Clonality:</b>	Polyclonal
<b>Immunogen Species:</b>	S1PR5 / EDG8 / S1P5 antibody was raised against Human
<b>Antigen Type:</b>	Synthetic peptide
<b>Immunogen:</b>	S1PR5 / EDG8 / S1P5 antibody was raised against synthetic 17 amino acid peptide from N-terminal extracellular domain of human S1PR5 / EDG8. Percent identity with other species by BLAST analysis: Human, Gorilla, Monkey, Marmoset, Elephant, Bat, Pig (100%); Mouse, Rat, Hamster, Dog, Bovine (94%).
<b>Specificity:</b>	Human S1PR5 / EDG8. BLAST analysis of the peptide immunogen showed no homology with other human proteins.
<b>Epitope:</b>	N-Terminus
<b>Reactivity:</b>	Human, Gorilla, Monkey, Rat, Bat, Pig
<b>Predicted Reactivity:</b>	Mouse, Bovine, Dog, Hamster
<b>Purification:</b>	Immunoaffinity purified
<b>Presentation:</b>	PBS, 0.1% sodium azide.
<b>Recommended Storage:</b>	Long term: -70°C; Short term: +4°C
<b>Uses:</b>	IHC - Paraffin (3 - 6 µg/ml) (Optimal dilution to be determined by the researcher)
<b>Size:</b>	50 µg
<b>Concentration:</b>	1 mg/ml

**Immunohistochemistry Image:**



Anti-S1PR5 / EDG8 antibody LS-A3802 IHC of rat brain, neurons and glia.  
Immunohistochemistry of formalin-fixed, paraffin-embedded tissue after heat-induced antigen retrieval.

**Requested From:**

Japan

Laboratory Reagent For In Vitro Research Use Only

Not for resale without prior written consent from LifeSpan BioSciences, Inc.

Created on 9/23/2014

© 2014 LifeSpan BioSciences