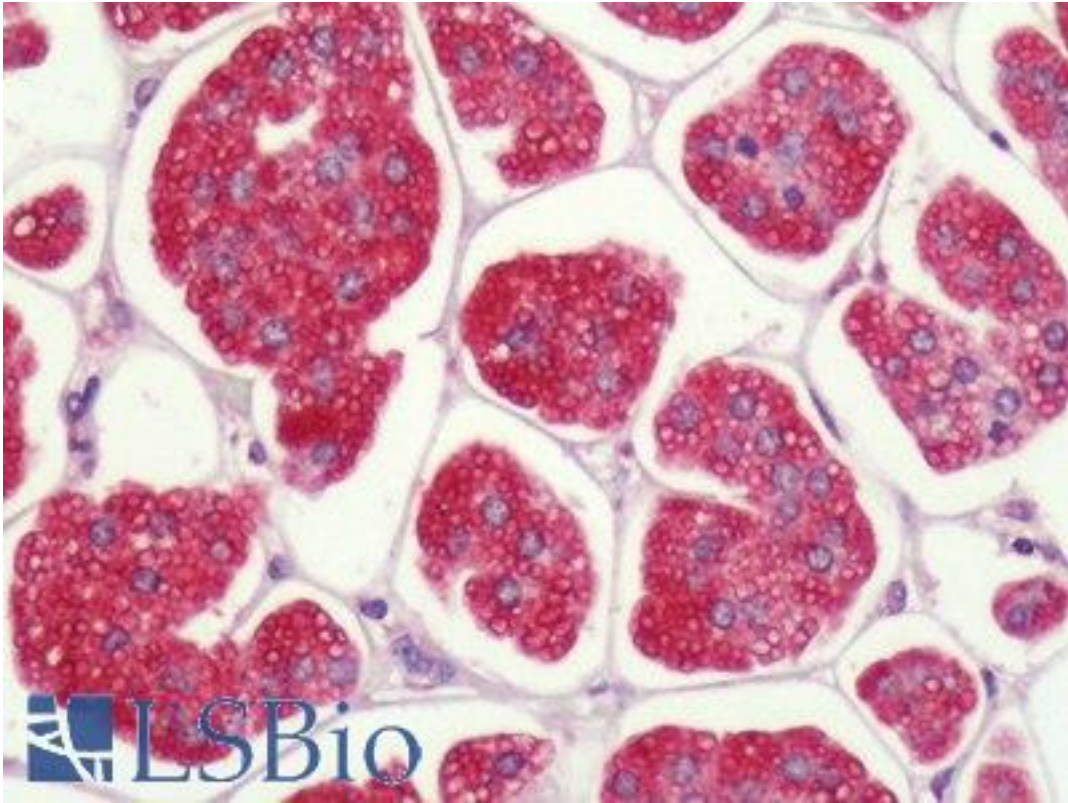
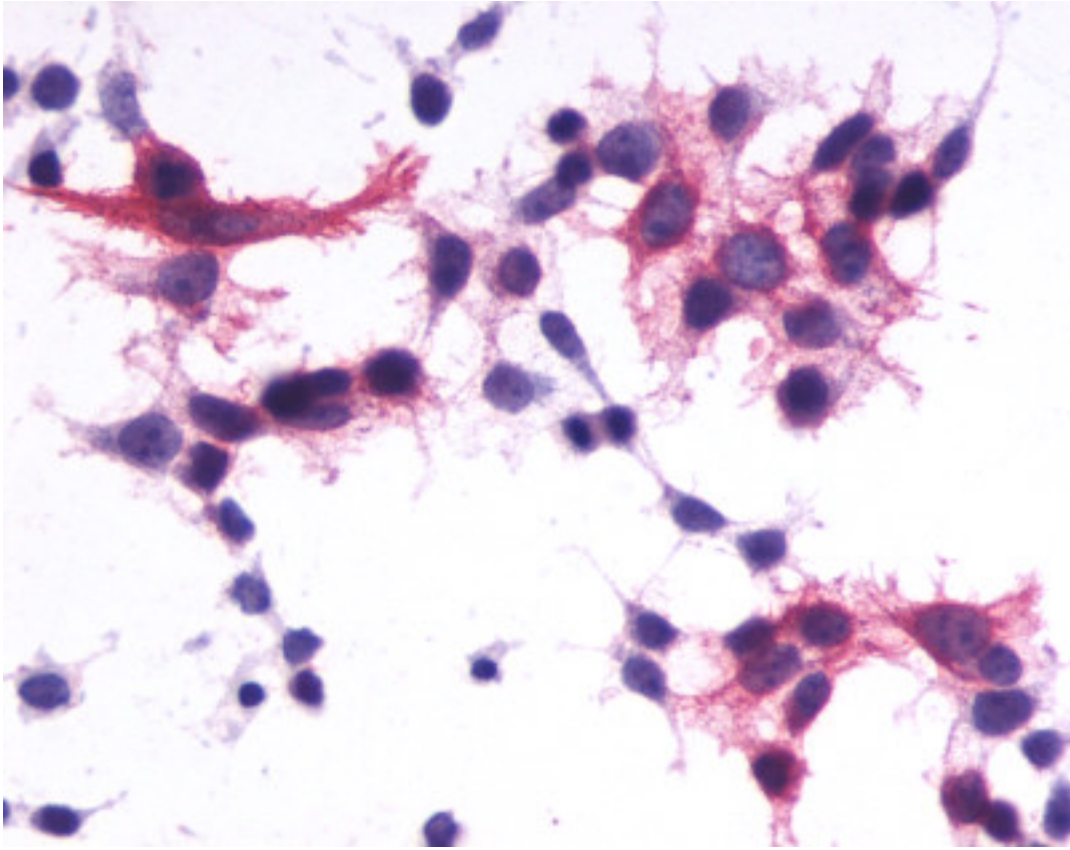


P2RY1 / P2Y1 Rabbit anti-Human Polyclonal (C-Terminus) Antibody - LS-A3795 - LSBio	
<b>CatalogID:</b>	LS-A3795
<b>Target:</b>	purinergic receptor P2Y, G-protein coupled, 1 (P2RY1)
<b>Synonyms:</b>	P2RY1 Antibody, ATP receptor Antibody, p2Y1 Antibody, p2y1r Antibody, Platelet ADP receptor Antibody, Purinoceptor p2y1 Antibody, Purinergic receptor Antibody, p2 purinoceptor subtype Y1 Antibody, p2RY1 Antibody, p2Y purinoceptor 1 Antibody, p2y-1-r Antibody, Purinoceptor p2yr1 Antibody, p2y1 receptor Antibody
<b>Family / Subfamily:</b>	GPCR / Purinergic
<b>Host</b>	P2RY1 antibody was produced in Rabbit
<b>Clonality:</b>	Polyclonal
<b>Immunogen Species:</b>	P2RY1 / P2Y1 antibody was raised against Human
<b>Antigen Type:</b>	Synthetic peptide
<b>Immunogen:</b>	P2RY1 / P2Y1 antibody was raised against synthetic 15 amino acid peptide from C-terminus of human P2RY1 / P2Y1. Percent identity with other species by BLAST analysis: Human, Gorilla, Gibbon, Monkey, Marmoset, Mouse, Rat, Hamster, Elephant, Panda, Bat, Dog, Bovine, Rabbit, Opossum, Guinea pig (100%); Horse, Xenopus (93%); Lizard (87%); Turkey, Chicken (80%).
<b>Specificity:</b>	Human P2RY1 / P2Y1. BLAST analysis of the peptide immunogen showed no homology with other human proteins.
<b>Epitope:</b>	C-Terminus
<b>Reactivity:</b>	Human, Gorilla, Gibbon, Monkey, Mouse, Rat, Bat, Bovine, Dog, Guinea pig, Hamster, Rabbit
<b>Predicted Reactivity:</b>	Horse, Xenopus
<b>Purification:</b>	Immunoaffinity purified
<b>Presentation:</b>	PBS, 0.1% sodium azide.
<b>Recommended Storage:</b>	Long term: -70°C; Short term: +4°C
<b>Uses:</b>	IHC - Paraffin (2 - 5 µg/ml), ICC (Optimal dilution to be determined by the researcher)
<b>Size:</b>	50 µg
<b>Concentration:</b>	1 mg/ml

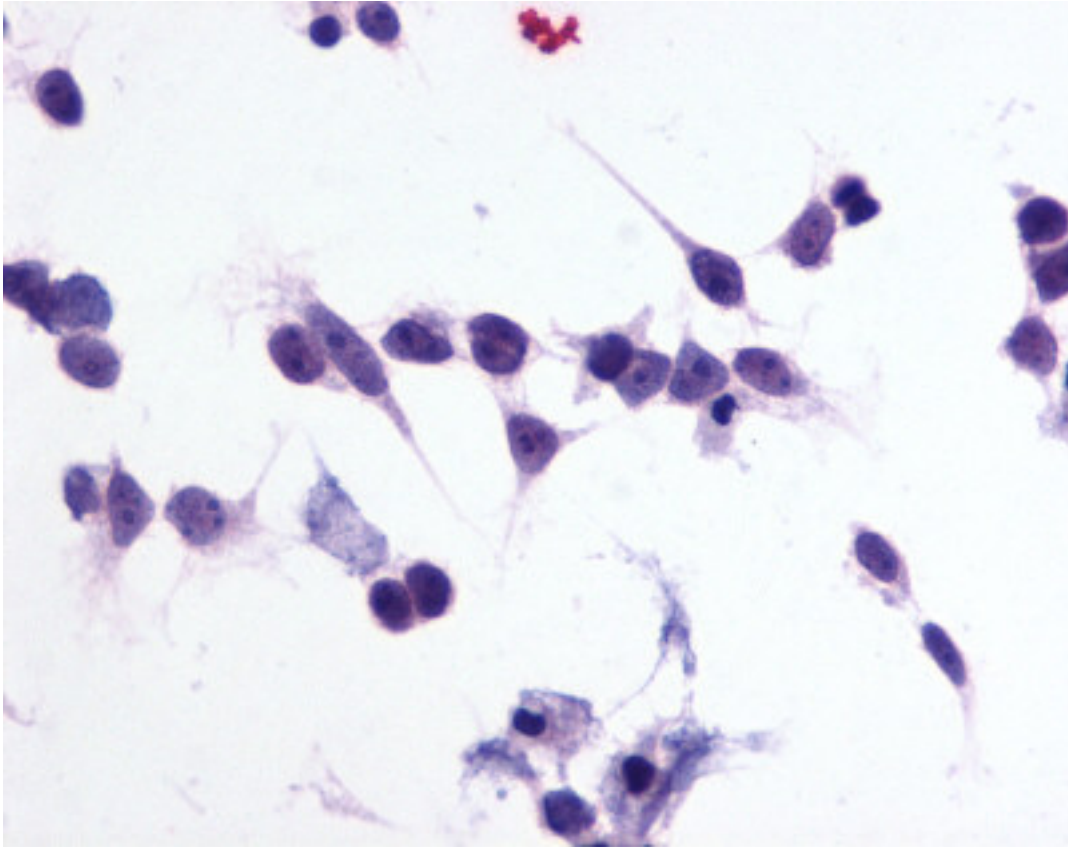
**Immunohistochemistry Image:**



Human, Adrenal: Formalin-Fixed Paraffin-Embedded (FFPE)



Cells expressing vector only - immunostained with target antibody



Cells expressing vector only - immunostained with target antibody

**Requested From:**

Japan

Laboratory Reagent For In Vitro Research Use Only

Not for resale without prior written consent from LifeSpan BioSciences, Inc.

Created on 9/23/2014

© 2014 LifeSpan BioSciences