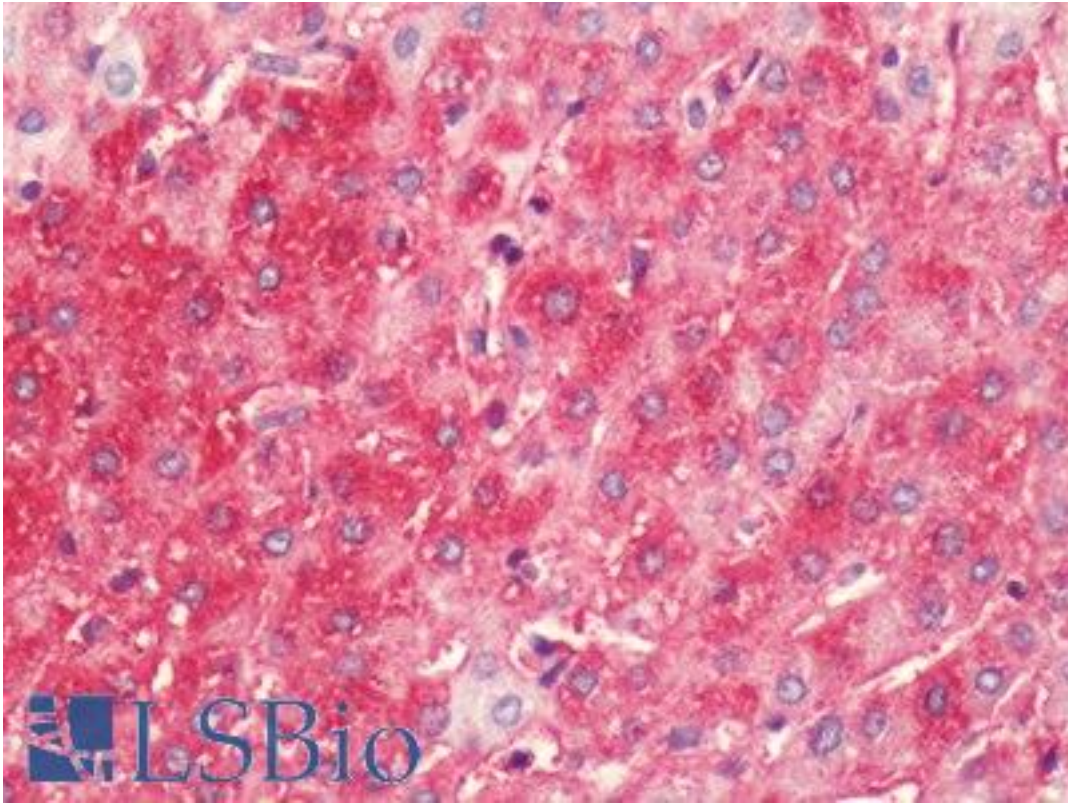
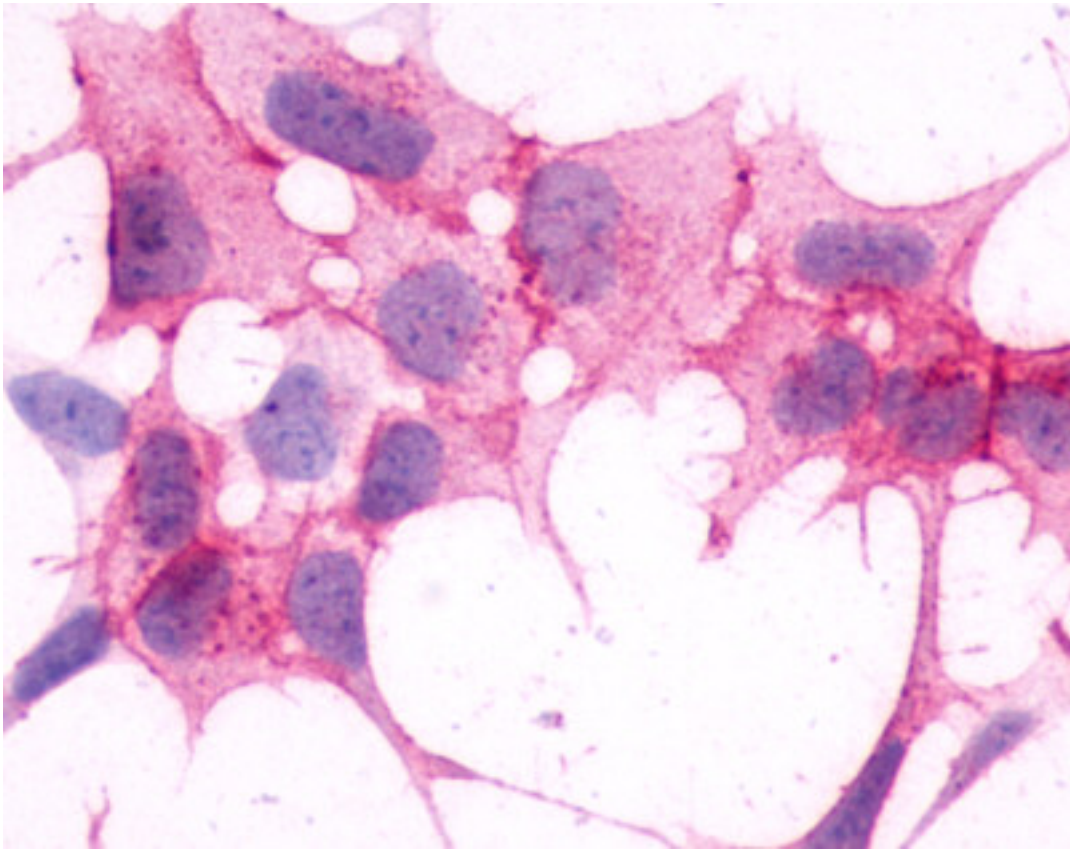


HRH4 / Histamine H4 Receptor Rabbit anti-Human Polyclonal (C-Terminus) Antibody - LS-A3785 - LSBio	
CatalogID:	LS-A3785
Target:	histamine receptor H4 (HRH4)
Synonyms:	HRH4 Antibody, BG26 Antibody, G-protein coupled receptor 105 Antibody, GPRv53 Antibody, H4 Antibody, HH4R Antibody, Histamine H4 receptor Antibody, GPCR105 Antibody, H4R Antibody, Pfi-013 Antibody, SP9144 Antibody, AXOR35 Antibody, Gprc105 Antibody, H4 histamine receptor Antibody, Histamine receptor H4 Antibody
Family / Subfamily:	GPCR / Histamine
Host	HRH4 antibody was produced in Rabbit
Clonality:	Polyclonal
Immunogen Species:	HRH4 / Histamine H4 Receptor antibody was raised against Human
Antigen Type:	Synthetic peptide
Immunogen:	HRH4 / Histamine H4 Receptor antibody was raised against synthetic 17 amino acid peptide from C-terminus of human HRH4 / Histamine H4 Receptor. Percent identity with other species by BLAST analysis: Human (100%); Gibbon, Monkey (94%).
Specificity:	Human HRH4 / Histamine H4 Receptor. BLAST analysis of the peptide immunogen showed no homology with other human proteins.
Epitope:	C-Terminus
Reactivity:	Human
Predicted Reactivity:	Gibbon, Monkey
Purification:	Immunoaffinity purified
Presentation:	PBS, 0.1% sodium azide.
Recommended Storage:	Long term: -70°C; Short term: +4°C
Uses:	IHC - Paraffin (5 - 10 µg/ml), ICC, ELISA (Optimal dilution to be determined by the researcher)
Size:	50 µg
Concentration:	1 mg/ml

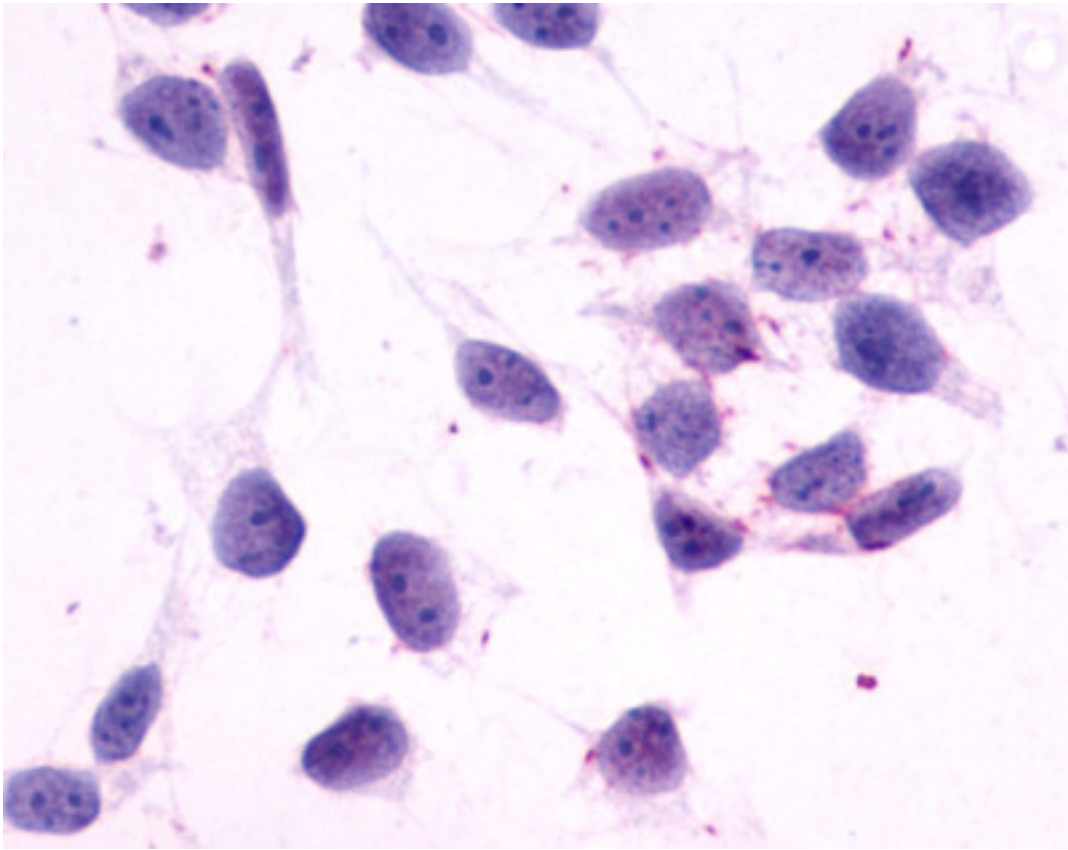
Immunohistochemistry Image:



Human, Liver: Formalin-Fixed Paraffin-Embedded (FFPE)



Cells expressing vector only - immunostained with target antibody



Cells expressing vector only - immunostained with target antibody

Requested From:

Japan

Laboratory Reagent For In Vitro Research Use Only

Not for resale without prior written consent from LifeSpan BioSciences, Inc.

Created on 9/23/2014

© 2014 LifeSpan BioSciences