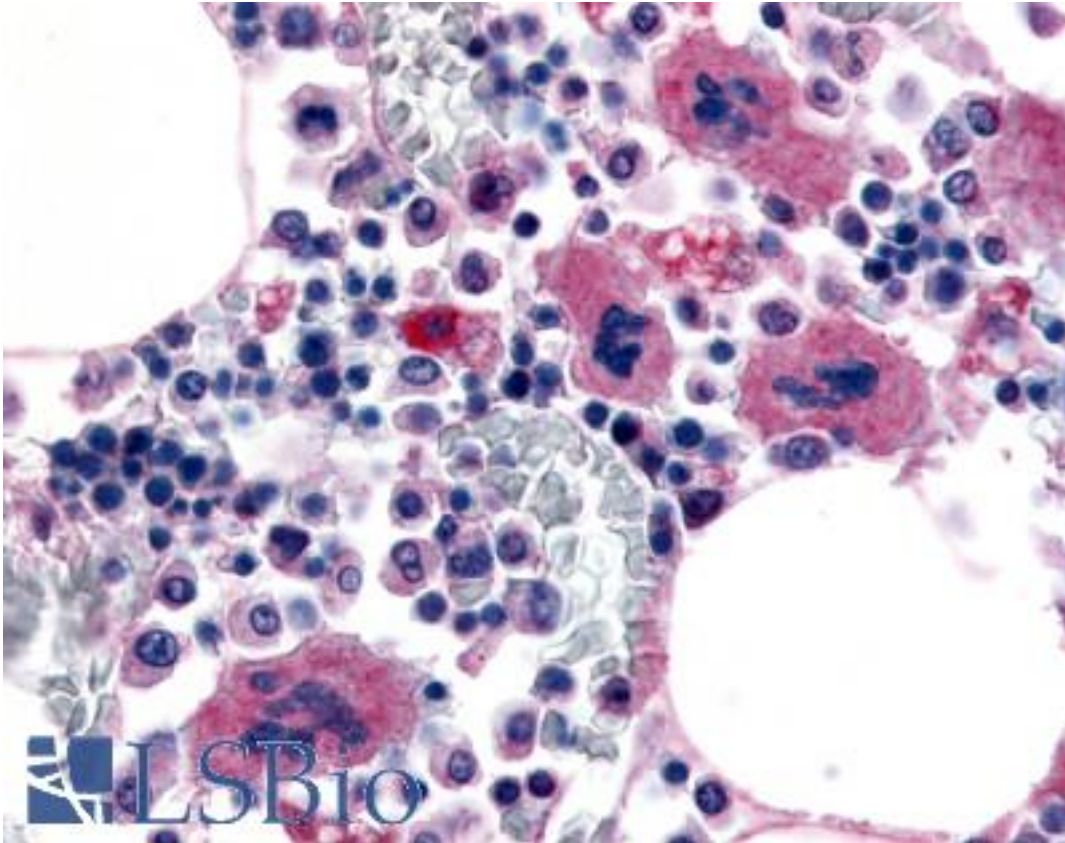


P2RY12 / P2Y12 Rabbit anti-Human Polyclonal (Extracellular Domain) Antibody - LS-A3745 - LSBio	
CatalogID:	LS-A3745
Target:	purinergic receptor P2Y, G-protein coupled, 12 (P2RY12)
Synonyms:	P2RY12 Antibody, ADP-glucose receptor Antibody, ADPG-R Antibody, p2Y(12)R Antibody, p2Y(ADP) Antibody, p2T(AC) Antibody, p2Y12 Antibody, Platelet ADP receptor Antibody, SP1999 Antibody, p2RY12 Antibody, p2Y purinoceptor 12 Antibody, Purinergic receptor P2RY12 Antibody, BDPLT8 Antibody, Gi-coupled ADP receptor HORK3 Antibody, HORK3 Antibody, p2Y(AC) Antibody, p2Y(cyc) Antibody, p2Y12 platelet ADP receptor Antibody
Family / Subfamily:	GPCR / Purinergic
Host	P2RY12 antibody was produced in Rabbit
Clonality:	Polyclonal
Immunogen Species:	P2RY12 / P2Y12 antibody was raised against Human
Antigen Type:	Synthetic peptide
Immunogen:	P2RY12 / P2Y12 antibody was raised against synthetic 16 amino acid peptide from 2nd extracellular domain of human P2RY12 / P2Y12. Percent identity with other species by BLAST analysis: Human, Gorilla, Gibbon, Monkey, Marmoset, Panda, Dog, Horse, Rabbit (100%); Bat, Pig, Platypus (94%); Mouse, Hamster, Bovine, Opossum (88%); Rat, Elephant (81%).
Specificity:	Human P2RY12 / P2Y12. BLAST analysis of the peptide immunogen showed no homology with other human proteins, except CACNA1F (56%).
Epitope:	Extracellular Domain
Reactivity:	Human, Gorilla, Gibbon, Monkey, Dog, Horse, Rabbit
Predicted Reactivity:	Bat, Pig
Purification:	Immunoaffinity purified
Presentation:	PBS, 0.1% sodium azide.
Recommended Storage:	Long term: -70°C; Short term: +4°C
Uses:	IHC - Paraffin (10 µg/ml) (Optimal dilution to be determined by the researcher)
Size:	50 µg
Concentration:	1 mg/ml

Immunohistochemistry Image:



Anti-P2RY12 / P2Y12 antibody LS-A3745 IHC of human bone marrow, megakaryocytes. Immunohistochemistry of formalin-fixed, paraffin-embedded tissue after heat-induced antigen retrieval.

Requested From:

Japan

Laboratory Reagent For In Vitro Research Use Only

Not for resale without prior written consent from LifeSpan BioSciences, Inc.

Created on 9/23/2014

© 2014 LifeSpan BioSciences