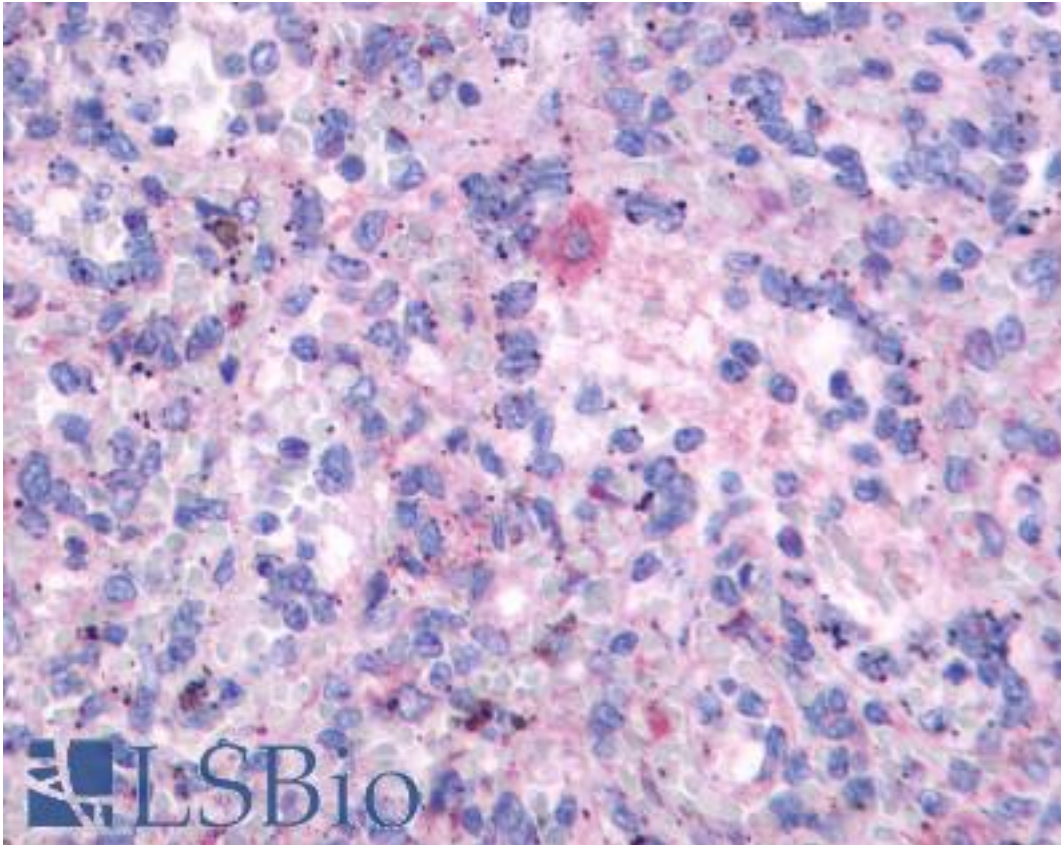


**FPR3 / FPRL2 Rabbit anti-Human Polyclonal (N-Terminus) Antibody - LS-A3735 - LSBio**

|                              |  |
|------------------------------|--|
| <b>CatalogID:</b>            | LS-A3735   |
| <b>Target:</b>               | formyl peptide receptor 3 (FPR3)   |
| <b>Synonyms:</b>             | FPR3 Antibody, FMLP-related receptor II Antibody, Formyl peptide receptor 3 Antibody, Formyl peptide receptor-like 2 Antibody, FPRL2 Antibody, FML2_HUMAN Antibody, FMLP-R-II Antibody, FMLPY Antibody, FPRH1 Antibody, FPRH2 Antibody, N-formyl peptide receptor 3 Antibody, N-formyl receptor-like 2 Antibody, RMLP-R-I Antibody |
| <b>Family / Subfamily:</b>   | GPCR / Chemoattractant   |
| <b>Host</b>                  | FPR3 antibody was produced in Rabbit   |
| <b>Clonality:</b>            | Polyclonal   |
| <b>Immunogen Species:</b>    | FPR3 / FPRL2 antibody was raised against Human   |
| <b>Antigen Type:</b>         | Synthetic peptide  |
| <b>Immunogen:</b>            | FPR3 / FPRL2 antibody was raised against synthetic 18 amino acid peptide from N-terminal extracellular domain of human FPR3 / FPRH2. Percent identity with other species by BLAST analysis: Human, Chimpanzee, Gorilla, Monkey (100%); Orangutan (94%); Gibbon (89%).  |
| <b>Specificity:</b>          | Human FPR3 / FPRH2. BLAST analysis of the peptide immunogen showed no homology with other human proteins.  |
| <b>Epitope:</b>              | N-Terminus   |
| <b>Reactivity:</b>           | Human, Chimpanzee, Gorilla, Monkey   |
| <b>Predicted Reactivity:</b> | Orangutan  |
| <b>Purification:</b>         | Immunoaffinity purified  |
| <b>Presentation:</b>         | PBS, 0.1% sodium azide.  |
| <b>Recommended Storage:</b>  | Long term: -70°C; Short term: +4°C   |
| <b>Uses:</b>                 | IHC - Paraffin (3 µg/ml), ICC (Optimal dilution to be determined by the researcher)  |
| <b>Size:</b>                 | 50 µg  |
| <b>Concentration:</b>        | 1 mg/ml  |

**Immunohistochemistry Image:**



Anti-FPR3 / FPRH2 antibody LS-A3735 IHC of human spleen. Immunohistochemistry of formalin-fixed, paraffin-embedded tissue after heat-induced antigen retrieval.

**Requested From:**

Japan

Laboratory Reagent For In Vitro Research Use Only

Not for resale without prior written consent from LifeSpan BioSciences, Inc.

Created on 9/23/2014

© 2014 LifeSpan BioSciences