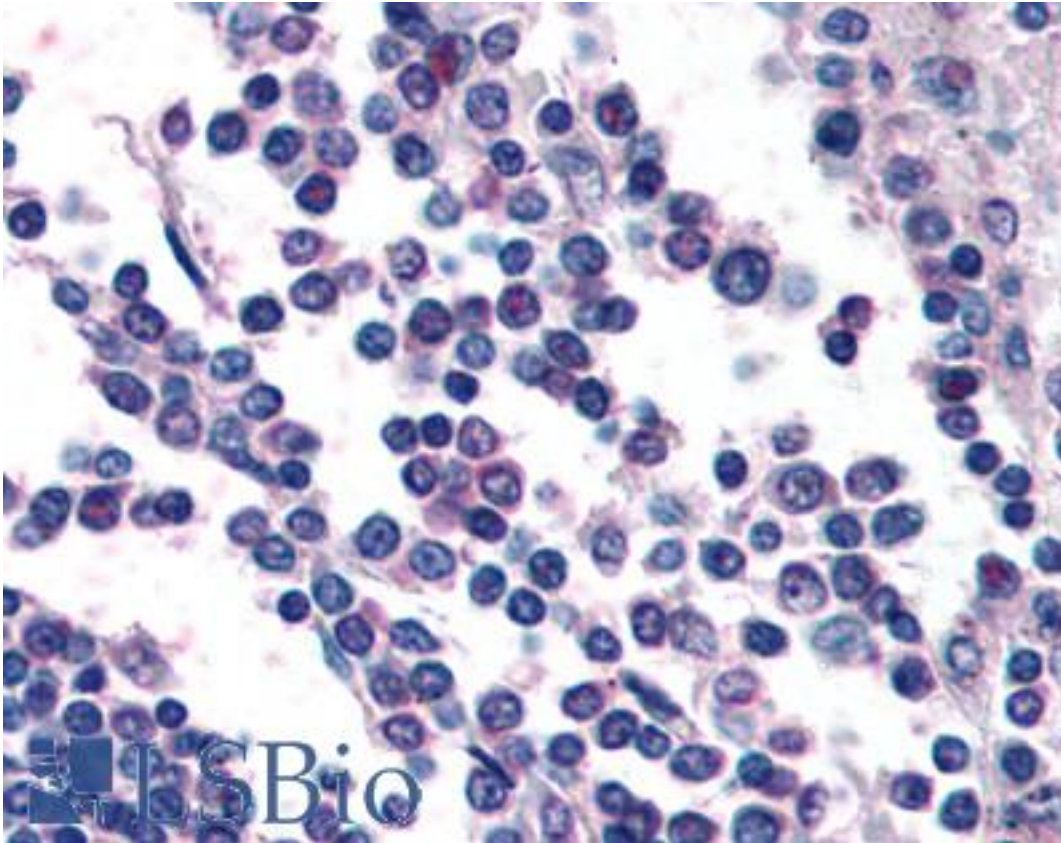


GPR132 / G2A Rabbit anti-Human Polyclonal (C-Terminus) Antibody - LS-A3701 - LSBio	
CatalogID:	LS-A3701
Target:	G protein-coupled receptor 132 (GPR132)
Synonyms:	GPR132 Antibody, G2A Antibody, G protein-coupled receptor 132 Antibody, G protein-coupled receptor G2A Antibody, G2 accumulation protein Antibody, G2a receptor Antibody
Family / Subfamily:	GPCR / Lysophospholipid/Lyso sphingolipid
Host	GPR132 antibody was produced in Rabbit
Clonality:	Polyclonal
Immunogen Species:	GPR132 / G2A antibody was raised against Human
Antigen Type:	Synthetic peptide
Immunogen:	GPR132 / G2A antibody was raised against synthetic 18 amino acid peptide from C-terminus of human GPR132 / G2A. Percent identity with other species by BLAST analysis: Human (100%); Gorilla, Marmoset (89%); Gibbon, Monkey (83%).
Specificity:	Human GPR132 / G2A. BLAST analysis of the peptide immunogen showed no homology with other human proteins.
Epitope:	C-Terminus
Reactivity:	Human
Purification:	Immunoaffinity purified
Presentation:	PBS, 0.1% sodium azide.
Recommended Storage:	Long term: -70°C; Short term: +4°C
Usage Summary:	Immunohistochemistry: LS-A3701 was validated for use in immunohistochemistry on a panel of 21 formalin-fixed, paraffin-embedded (FFPE) human tissues after heat induced antigen retrieval in pH 6.0 citrate buffer. After incubation with the primary antibody, slides were incubated with biotinylated secondary antibody, followed by alkaline phosphatase-streptavidin and chromogen. The stained slides were evaluated by a pathologist to confirm staining specificity. The optimal working concentration for LS-A3701 was determined to be 11 ug/ml.
Uses:	IHC - Paraffin (12 µg/ml), ELISA (Optimal dilution to be determined by the researcher)
Size:	50 µg
Concentration:	1 mg/ml

Immunohistochemistry Image:



Anti-GPR132 / G2A antibody LS-A3701 IHC of human spleen. Immunohistochemistry of formalin-fixed, paraffin-embedded tissue after heat-induced antigen retrieval.

Requested From:

Japan

Laboratory Reagent For In Vitro Research Use Only

Not for resale without prior written consent from LifeSpan BioSciences, Inc.

Created on 9/23/2014

© 2014 LifeSpan BioSciences