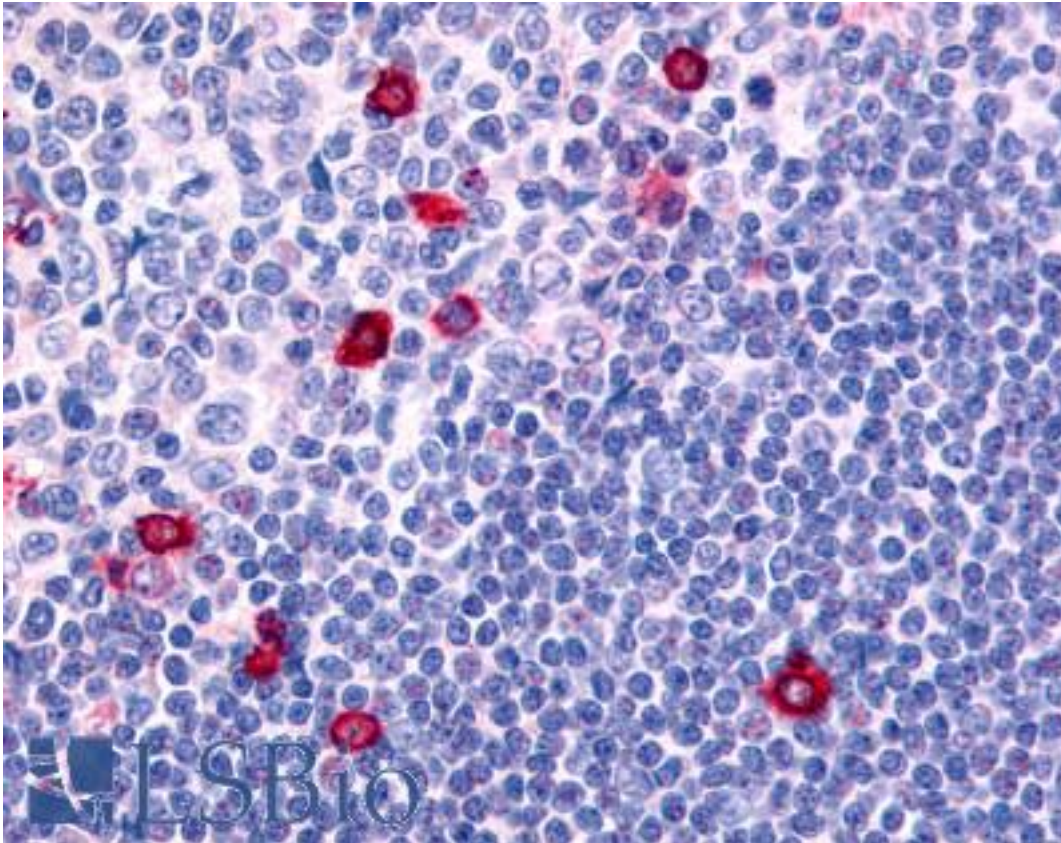


CNR2 / CB2 Rabbit anti-Human Polyclonal (Internal) Antibody - LS-A36 - LSBio	
<b>CatalogID:</b>	LS-A36
<b>Target:</b>	cannabinoid receptor 2 (macrophage) (CNR2)
<b>Synonyms:</b>	CNR2 Antibody, Cannabinoid receptor 2 Antibody, CB2 Antibody, CB2 cannabinoid receptor Antibody, CX5 Antibody, CB2R Antibody, HCB2 Antibody, Cannabinoid CB2 receptor Antibody, CB-2 Antibody, CB2 receptor Antibody
<b>Family / Subfamily:</b>	GPCR / Cannabinoid
<b>Host</b>	CNR2 antibody was produced in Rabbit
<b>Clonality:</b>	Polyclonal
<b>Immunogen Species:</b>	CNR2 / CB2 antibody was raised against Human
<b>Antigen Type:</b>	Synthetic peptide
<b>Immunogen:</b>	CNR2 / CB2 antibody was raised against synthetic 19 amino acid peptide from internal region of human CNR2 / CB2. Percent identity with other species by BLAST analysis: Human, Gorilla (100%); Monkey, Marmoset, Elephant (95%); Gibbon, Bovine (89%); Horse (84%).
<b>Specificity:</b>	Human CNR2 / CB2. BLAST analysis of the peptide immunogen showed no homology with other human proteins, except PROS1 (47%).
<b>Epitope:</b>	Internal
<b>Reactivity:</b>	Human, Gorilla
<b>Predicted Reactivity:</b>	Monkey
<b>Purification:</b>	Immunoaffinity purified
<b>Presentation:</b>	PBS, 0.1% sodium azide.
<b>Recommended Storage:</b>	Long term: -70°C; Short term: +4°C
<b>Uses:</b>	IHC - Paraffin (5 - 10 µg/ml) (Optimal dilution to be determined by the researcher)
<b>Size:</b>	50 µg
<b>Concentration:</b>	1 mg/ml

**Immunohistochemistry Image:**



Anti-CNR2 / CB2 antibody LS-A36 IHC of human germinal center and mantle zone. Immunohistochemistry of formalin-fixed, paraffin-embedded tissue after heat-induced antigen retrieval.

**Requested From:**

Japan

Laboratory Reagent For In Vitro Research Use Only

Not for resale without prior written consent from LifeSpan BioSciences, Inc.

Created on 9/23/2014

© 2014 LifeSpan BioSciences