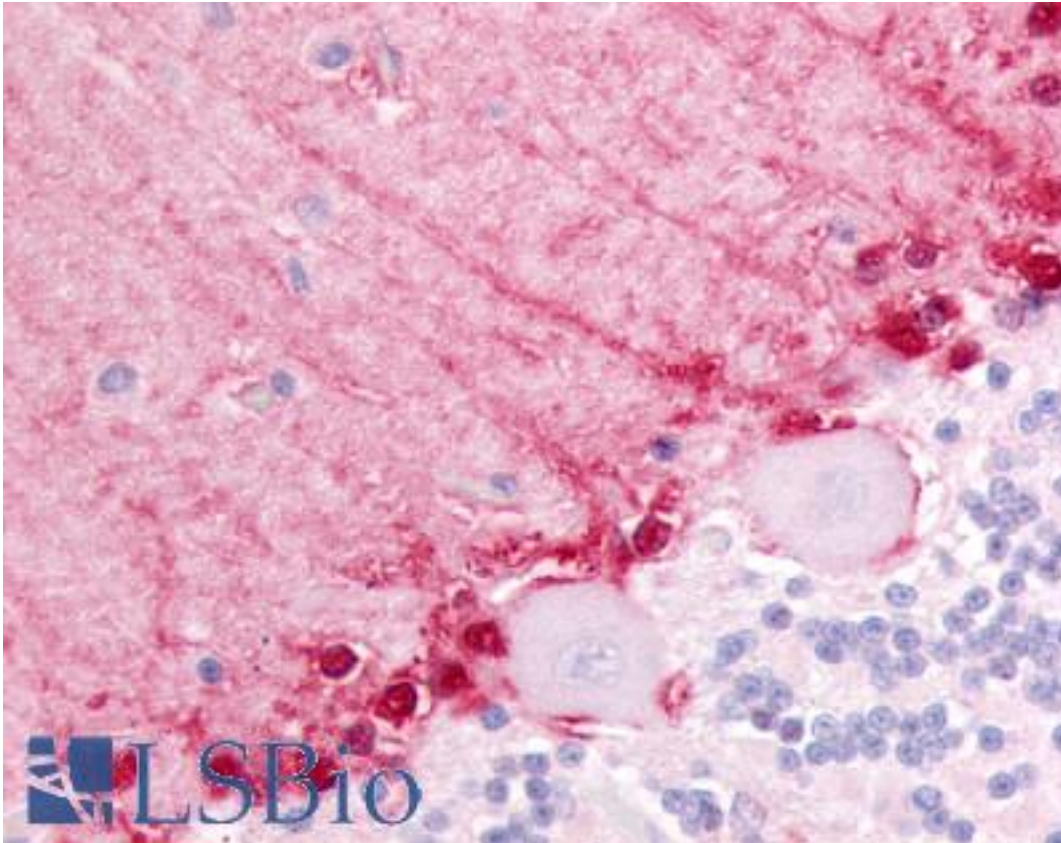


BAI3 Rabbit anti-Human Polyclonal (N-Terminus) Antibody - LS-A3583 - LSBio

| | |
|------------------------------|--|
| CatalogID: | LS-A3583 |
| Target: | brain-specific angiogenesis inhibitor 3 (BAI3) |
| Synonyms: | BAI3 Antibody, KIAA0550 Antibody |
| Family / Subfamily: | GPCR / Orphan-B |
| Host | BAI3 antibody was produced in Rabbit |
| Clonality: | Polyclonal |
| Immunogen Species: | BAI3 antibody was raised against Human |
| Antigen Type: | Synthetic peptide |
| Immunogen: | BAI3 antibody was raised against synthetic 18 amino acid peptide from N-terminal extracellular domain of human BAI3. Percent identity with other species by BLAST analysis: Human, Gibbon, Marmoset, Mouse, Rat, Horse (100%); Chicken (94%); Zebrafish (89%). |
| Specificity: | Human BAI3. BLAST analysis of the peptide immunogen showed no homology with other human proteins, except ABCA13 (50%). |
| Epitope: | N-Terminus |
| Reactivity: | Human, Gibbon, Monkey, Mouse, Rat, Horse |
| Predicted Reactivity: | Chicken |
| Purification: | Immunoaffinity purified |
| Presentation: | PBS, 0.1% sodium azide. |
| Recommended Storage: | Long term: -70°C; Short term: +4°C |
| Uses: | IHC - Paraffin (20 µg/ml) (Optimal dilution to be determined by the researcher) |
| Size: | 50 µg |
| Concentration: | 1 mg/ml |

Immunohistochemistry Image:



Anti-BAI3 antibody LS-A3583 IHC of human brain, cerebellum. Immunohistochemistry of formalin-fixed, paraffin-embedded tissue after heat-induced antigen retrieval.

Requested From:

Japan

Laboratory Reagent For In Vitro Research Use Only

Not for resale without prior written consent from LifeSpan BioSciences, Inc.

Created on 9/23/2014

© 2014 LifeSpan BioSciences