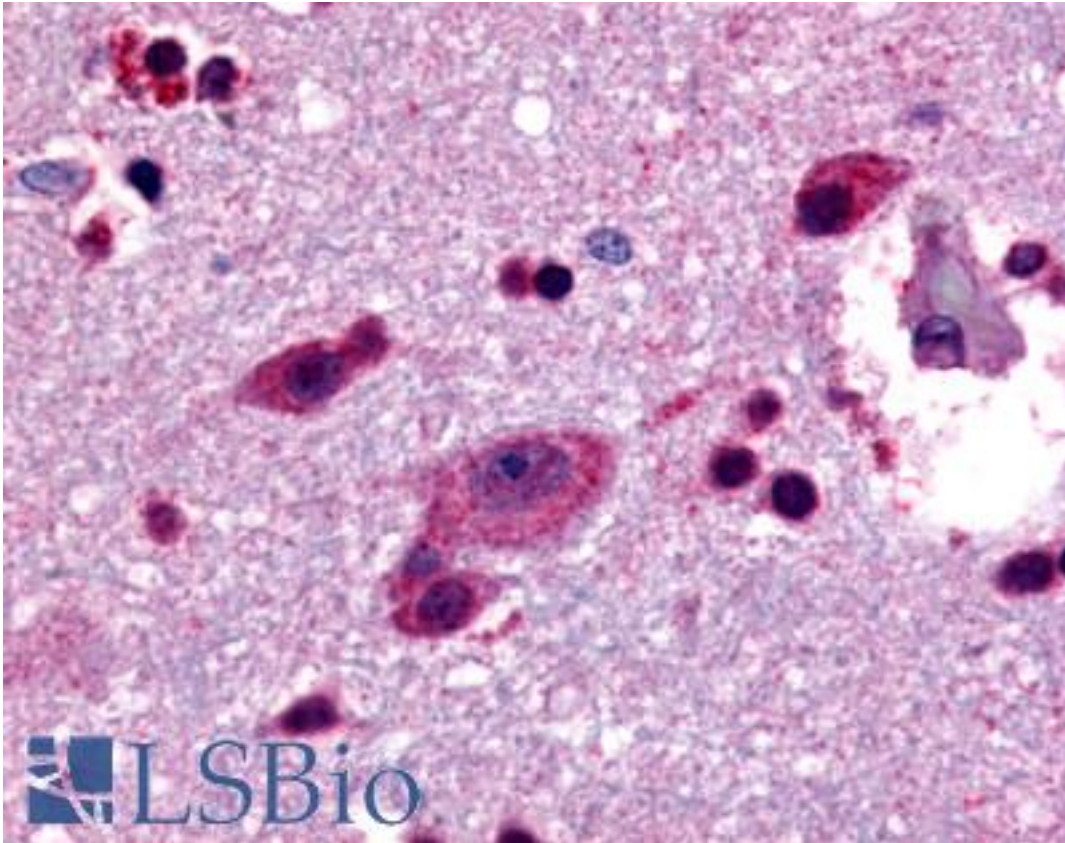


GPR48 / LGR4 Rabbit anti-Human Polyclonal (C-Terminus) Antibody - LS-A3560 - LSBio	
CatalogID:	LS-A3560
Target:	leucine-rich repeat containing G protein-coupled receptor 4 (LGR4)
Synonyms:	LGR4 Antibody, G-protein coupled receptor 48 Antibody, G protein-coupled receptor 48 Antibody, GPR48 Antibody
Family / Subfamily:	GPCR / Orphan-A
Host	LGR4 antibody was produced in Rabbit
Clonality:	Polyclonal
Immunogen Species:	GPR48 / LGR4 antibody was raised against Human
Antigen Type:	Synthetic peptide
Immunogen:	GPR48 / LGR4 antibody was raised against synthetic 20 amino acid peptide from C-terminus of human LGR4. Percent identity with other species by BLAST analysis: Human, Gorilla, Orangutan, Gibbon, Monkey, Marmoset, Hamster, Rabbit (100%); Mouse, Rat, Bovine, Bat, Horse, Pig, Opossum, Turkey, Chicken (95%); Elephant, Panda, Dog, Platypus (90%); Xenopus (80%).
Specificity:	Human LGR4. BLAST analysis of the peptide immunogen showed no homology with other human proteins.
Epitope:	C-Terminus
Reactivity:	Human, Gorilla, Orangutan, Gibbon, Monkey, Hamster, Rabbit
Predicted Reactivity:	Mouse, Rat, Bat, Bovine, Dog, Horse, Pig, Chicken
Purification:	Immunoaffinity purified
Presentation:	PBS, 0.1% sodium azide.
Recommended Storage:	Long term: -70°C; Short term: +4°C
Uses:	IHC - Paraffin (13 µg/ml) (Optimal dilution to be determined by the researcher)
Size:	50 µg
Concentration:	1 mg/ml

Immunohistochemistry Image:



Anti-LGR4 antibody LS-A3560 IHC of human brain, cortex. Immunohistochemistry of formalin-fixed, paraffin-embedded tissue after heat-induced antigen retrieval.

Requested From:

Japan

Laboratory Reagent For In Vitro Research Use Only

Not for resale without prior written consent from LifeSpan BioSciences, Inc.

Created on 9/23/2014

© 2014 LifeSpan BioSciences