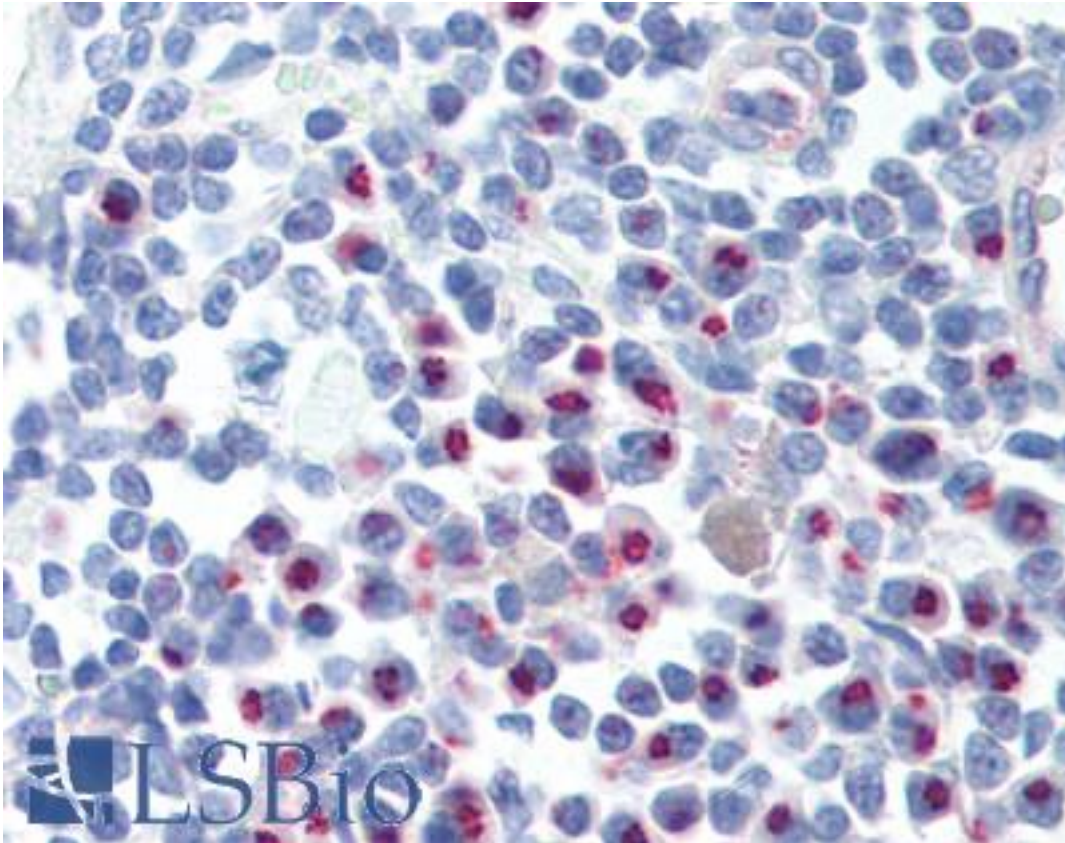


CCR4 Rabbit anti-Human Polyclonal (N-Terminus) Antibody - LS-A348 - LSBio	
CatalogID:	LS-A348
Target:	chemokine (C-C motif) receptor 4 (CCR4)
Synonyms:	CCR4 Antibody, C-C chemokine receptor type 4 Antibody, CD194 Antibody, CD194 antigen Antibody, C-C CKR-4 Antibody, Chemr13 Antibody, CKR-4 Antibody, CC chemokine receptor 4 Antibody, CC-CKR-4 Antibody, CCR-4 Antibody, HGNC:14099 Antibody, C-c chemokine receptor 4 Antibody, Chemokine (C-C) receptor 4 Antibody, CKR4 Antibody, CMKBR4 Antibody, K5-5 Antibody
Family / Subfamily:	GPCR / Chemokine
Host	CCR4 antibody was produced in Rabbit
Clonality:	Polyclonal
Immunogen Species:	CCR4 antibody was raised against Human
Antigen Type:	Synthetic peptide
Immunogen:	CCR4 antibody was raised against synthetic 18 amino acid peptide from N-Terminus of human CCR4. Percent identity with other species by BLAST analysis: Human, Chimpanzee, Gorilla, Orangutan, Monkey, Galago (100%); Gibbon, Marmoset, Panda, Pig (94%); Dog, Rabbit, Horse (88%).
Specificity:	Human CCR4. BLAST analysis of the peptide immunogen showed no homology with other human proteins.
Epitope:	N-Terminus
Reactivity:	Human, Chimpanzee, Gorilla, Orangutan
Predicted Reactivity:	Gibbon, Monkey, Pig
Purification:	Immunoaffinity purified
Presentation:	PBS, 0.1% sodium azide.
Recommended Storage:	Long term: -70°C; Short term: +4°C
Uses:	IHC - Paraffin (10 µg/ml) (Optimal dilution to be determined by the researcher)
Size:	50 µg
Concentration:	0.66 mg/ml

Immunohistochemistry Image:



Anti-CCR4 antibody LS-A348 IHC of human lymph node. Immunohistochemistry of formalin-fixed, paraffin-embedded tissue after heat-induced antigen retrieval.

Requested From:

Japan

Laboratory Reagent For In Vitro Research Use Only

Not for resale without prior written consent from LifeSpan BioSciences, Inc.

Created on 9/23/2014

© 2014 LifeSpan BioSciences