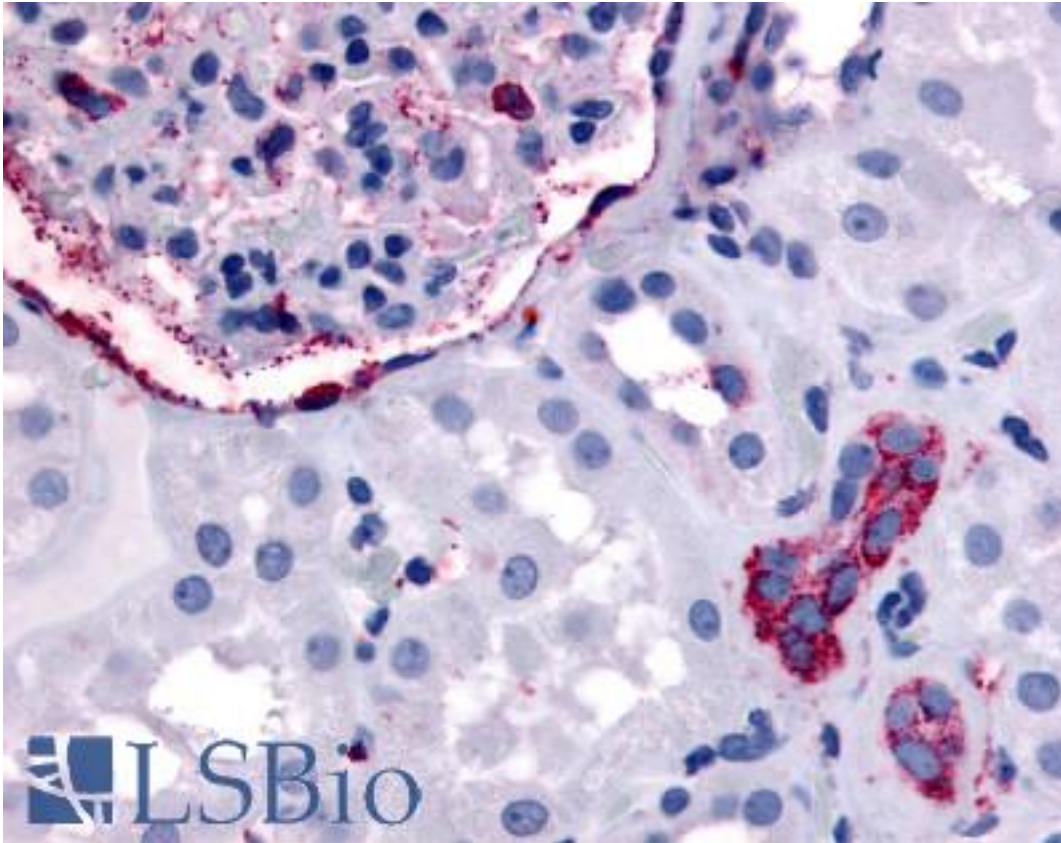


ERBB4 / HER4 Rabbit anti-Human Polyclonal (Internal) Antibody - LS-A3451 - LSBio

CatalogID:	LS-A3451
Target:	v-erb-b2 avian erythroblastic leukemia viral oncogene homolog 4 (ERBB4)
Synonyms:	ERBB4 Antibody, ERBB 4 Antibody, HER4 Antibody, p180 erb4 Antibody, p180erbB4 Antibody
Family / Subfamily:	Protein Kinase / EGF Receptor
Host	ERBB4 antibody was produced in Rabbit
Clonality:	Polyclonal
Immunogen Species:	ERBB4 / HER4 antibody was raised against Human
Antigen Type:	Synthetic peptide
Immunogen:	ERBB4 / HER4 antibody was raised against synthetic 20 amino acid peptide from internal region of human ERBB4. Percent identity with other species by BLAST analysis: Human, Gibbon, Marmoset, Mouse, Rat, Panda, Dog, Bat, Horse, Pig, Opossum, Turkey, Chicken, Platypus (100%).
Specificity:	Human ERBB4. BLAST analysis of the peptide immunogen showed no homology with other human proteins, except ERBB3 (55%), FRAS1 (55%).
Epitope:	Internal
Reactivity:	Human, Gibbon, Monkey, Mouse, Rat, Bat, Dog, Horse, Pig, Chicken
Purification:	Immunoaffinity purified
Presentation:	PBS, 0.1% sodium azide.
Recommended Storage:	Long term: -70°C; Short term: +4°C
Uses:	IHC - Paraffin (16 µg/ml) (Optimal dilution to be determined by the researcher)
Size:	50 µg
Concentration:	1 mg/ml

Immunohistochemistry Image:



Anti-ERBB4 antibody LS-A3451 IHC of human kidney. Immunohistochemistry of formalin-fixed, paraffin-embedded tissue after heat-induced antigen retrieval.

Requested From:

Japan

Laboratory Reagent For In Vitro Research Use Only

Not for resale without prior written consent from LifeSpan BioSciences, Inc.

Created on 9/23/2014

© 2014 LifeSpan BioSciences