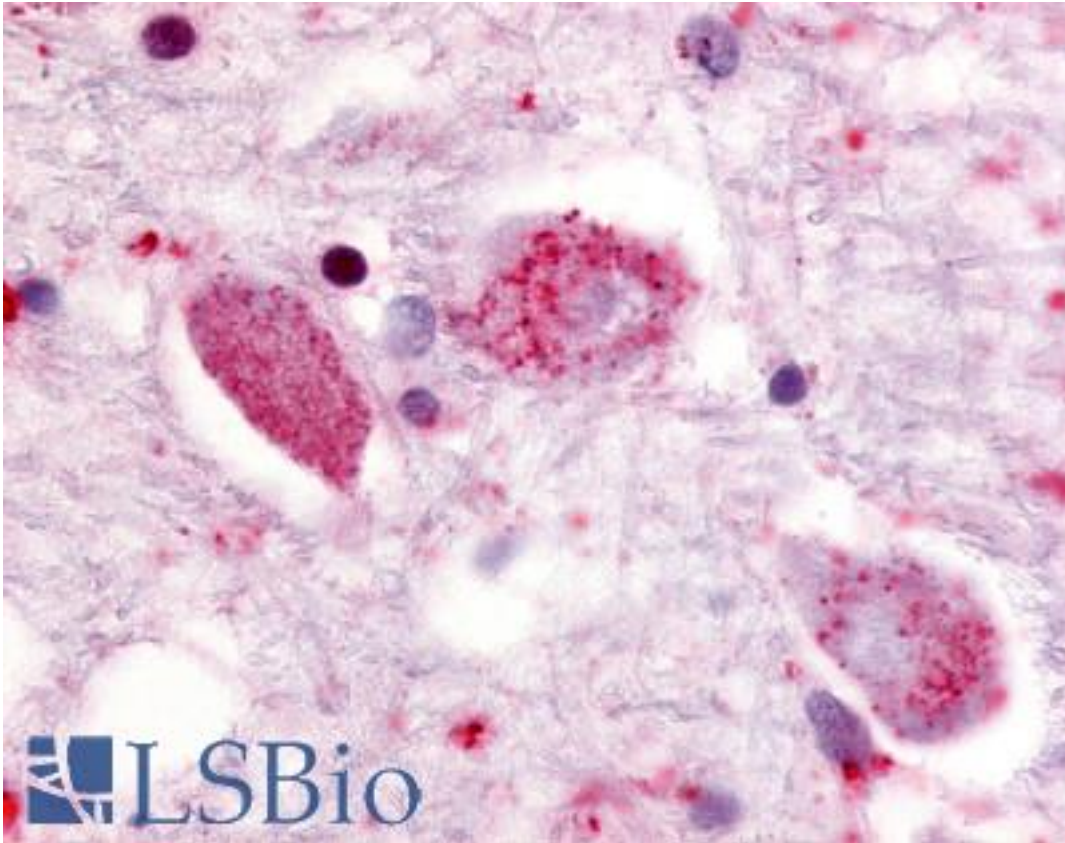


SREB / GPR85 Rabbit anti-Human Polyclonal (Cytoplasmic Domain) Antibody - LS-A341 - LSBio	
CatalogID:	LS-A341
Target:	G protein-coupled receptor 85 (GPR85)
Synonyms:	GPR85 Antibody, G protein-coupled receptor 85 Antibody, Rgpr85 Antibody, SREB Antibody, Pkrx1 Antibody, SREB2 Antibody
Family / Subfamily:	GPCR / Orphan-A
Host	GPR85 antibody was produced in Rabbit
Clonality:	Polyclonal
Immunogen Species:	SREB / GPR85 antibody was raised against Human
Antigen Type:	Synthetic peptide
Immunogen:	SREB / GPR85 antibody was raised against synthetic 18 amino acid peptide from 3rd cytoplasmic domain of human GPR85. Percent identity with other species by BLAST analysis: Human, Gorilla, Orangutan, Gibbon, Monkey, Marmoset, Mouse, Rat, Hamster, Elephant, Dog, Bat, Bovine, Horse, Rabbit, Pig, Opossum, Turkey, Chicken, Lizard, Xenopus (100%); Stickleback, Pufferfish, Zebrafish (94%).
Specificity:	Human GPR85. BLAST analysis of the peptide immunogen showed no homology with other human proteins.
Epitope:	Cytoplasmic Domain
Reactivity:	Human, Gorilla, Orangutan, Gibbon, Monkey, Mouse, Rat, Bat, Bovine, Dog, Hamster, Horse, Pig, Rabbit, Chicken, Xenopus
Predicted Reactivity:	Zebrafish
Purification:	Immunoaffinity purified
Presentation:	PBS, 0.1% sodium azide.
Recommended Storage:	Long term: -70°C; Short term: +4°C
Uses:	IHC - Paraffin (10 - 19 µg/ml) (Optimal dilution to be determined by the researcher)
Size:	50 µg
Concentration:	1 mg/ml

Immunohistochemistry Image:



Anti-GPR85 antibody LS-A341 IHC of human putamen, neurons. Immunohistochemistry of formalin-fixed, paraffin-embedded tissue after heat-induced antigen retrieval.

Requested From:

Japan

Laboratory Reagent For In Vitro Research Use Only

Not for resale without prior written consent from LifeSpan BioSciences, Inc.

Created on 9/23/2014

© 2014 LifeSpan BioSciences