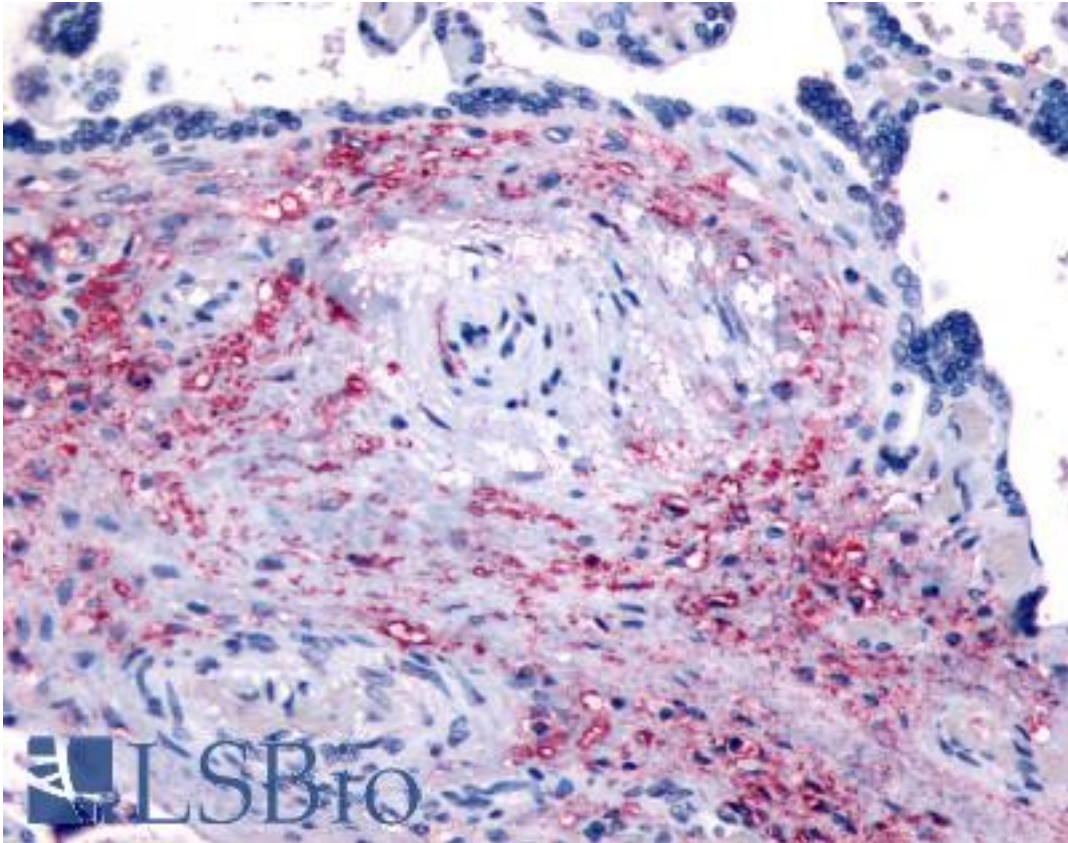


**NET1 Rabbit anti-Human Polyclonal (Internal) Antibody - LS-A3409 - LSBio**

<b>CatalogID:</b>	LS-A3409
<b>Target:</b>	neuroepithelial cell transforming 1 (NET1)
<b>Synonyms:</b>	NET1 Antibody, ARHGEF8 Antibody, NET1A Antibody, Proto-oncogene p65 Net1 Antibody
<b>Host</b>	NET1 antibody was produced in Rabbit
<b>Clonality:</b>	Polyclonal
<b>Immunogen Species:</b>	NET1 antibody was raised against Human
<b>Antigen Type:</b>	Synthetic peptide
<b>Immunogen:</b>	NET1 antibody was raised against synthetic 15 amino acid peptide from internal region of human NET1. Percent identity with other species by BLAST analysis: Human, Gorilla, Orangutan (100%); Gibbon, Marmoset, Mouse, Rat, Hamster, Elephant, Rabbit, Opossum, Platypus (93%); Panda, Dog, Horse, Turkey, Chicken (87%); Pig (80%).
<b>Specificity:</b>	Human NET1. BLAST analysis of the peptide immunogen showed no homology with other human proteins, except ARHGEF3 (60%).
<b>Epitope:</b>	Internal
<b>Reactivity:</b>	Human, Gorilla, Orangutan
<b>Predicted Reactivity:</b>	Gibbon, Monkey, Mouse, Rat, Hamster, Rabbit
<b>Purification:</b>	Immunoaffinity purified
<b>Presentation:</b>	PBS, 0.1% sodium azide.
<b>Recommended Storage:</b>	Long term: -70°C; Short term: +4°C
<b>Uses:</b>	IHC - Paraffin (10 µg/ml) (Optimal dilution to be determined by the researcher)
<b>Size:</b>	50 µg
<b>Concentration:</b>	1 mg/ml

**Immunohistochemistry Image:**



Anti-NET1 antibody LS-A3409 IHC of human placenta. Immunohistochemistry of formalin-fixed, paraffin-embedded tissue after heat-induced antigen retrieval.

**Requested From:**

Japan

Laboratory Reagent For In Vitro Research Use Only

Not for resale without prior written consent from LifeSpan BioSciences, Inc.

Created on 9/23/2014

© 2014 LifeSpan BioSciences