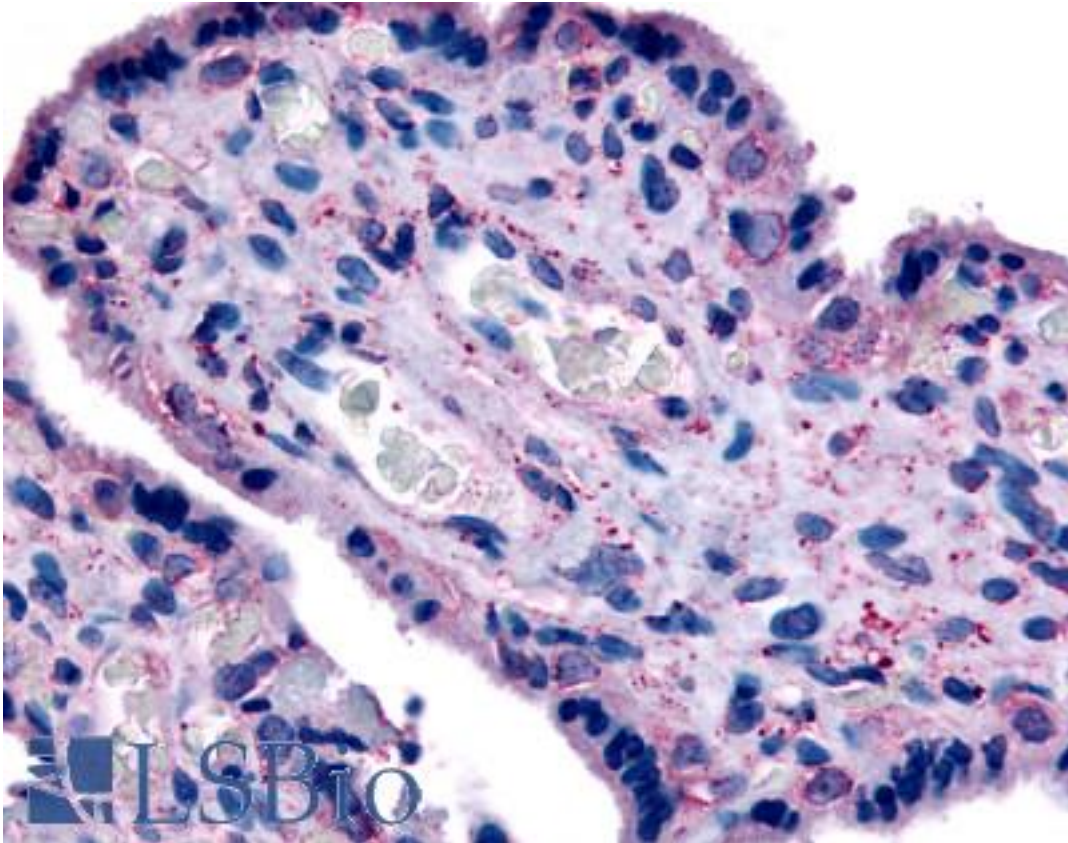


SLC7A5 / CD98 Rabbit anti-Human Polyclonal (N-Terminus) Antibody - LS-A3406 - LSBio	
CatalogID:	LS-A3406
Target:	solute carrier family 7 (amino acid transporter light chain, L system), member 5 (SLC7A5)
Synonyms:	SLC7A5 Antibody, 4F2 LC Antibody, 4F2 light chain Antibody, 4F2LC Antibody, CD98 Antibody, CD98 light chain Antibody, CD98LC Antibody, D16S469E Antibody, Integral membrane protein E16 Antibody, Membrane protein E16 Antibody, MPE16 Antibody, LAT1 Antibody, E16 Antibody, HLAT1 Antibody, TA1 Antibody
Family / Subfamily:	Transporter / Cationic amino acid transporter
Host	SLC7A5 antibody was produced in Rabbit
Clonality:	Polyclonal
Immunogen Species:	SLC7A5 / CD98 antibody was raised against Human
Antigen Type:	Synthetic peptide
Immunogen:	SLC7A5 / CD98 antibody was raised against synthetic 14 amino acid peptide from N-terminus of human SLC7A5. Percent identity with other species by BLAST analysis: Human, Gorilla, Gibbon, Marmoset, Dog, Elephant, Rabbit, Platypus (100%); Opossum (93%); Mouse, Rat, Bat, Hamster, Panda, Chicken (86%).
Specificity:	Human SLC7A5. BLAST analysis of the peptide immunogen showed no homology with other human proteins.
Epitope:	N-Terminus
Reactivity:	Human, Gorilla, Gibbon, Monkey, Dog, Rabbit
Purification:	Immunoaffinity purified
Presentation:	PBS, 0.1% sodium azide.
Recommended Storage:	Long term: -70°C; Short term: +4°C
Usage Summary:	Immunohistochemistry: LS-A3406 was validated for use in immunohistochemistry on a panel of 21 formalin-fixed, paraffin-embedded (FFPE) human tissues after heat induced antigen retrieval in pH 6.0 citrate buffer. After incubation with the primary antibody, slides were incubated with biotinylated secondary antibody, followed by alkaline phosphatase-streptavidin and chromogen. The stained slides were evaluated by a pathologist to confirm staining specificity. The optimal working concentration for LS-A3406 was determined to be 20 ug/ml.
Uses:	IHC - Paraffin (20 µg/ml) (Optimal dilution to be determined by the researcher)
Size:	50 µg
Concentration:	1 mg/ml

Immunohistochemistry Image:



Anti-SLC7A5 antibody LS-A3406 IHC of human placenta. Immunohistochemistry of formalin-fixed, paraffin-embedded tissue after heat-induced antigen retrieval.

Requested From:

Japan

Laboratory Reagent For In Vitro Research Use Only

Not for resale without prior written consent from LifeSpan BioSciences, Inc.

Created on 9/23/2014

© 2014 LifeSpan BioSciences