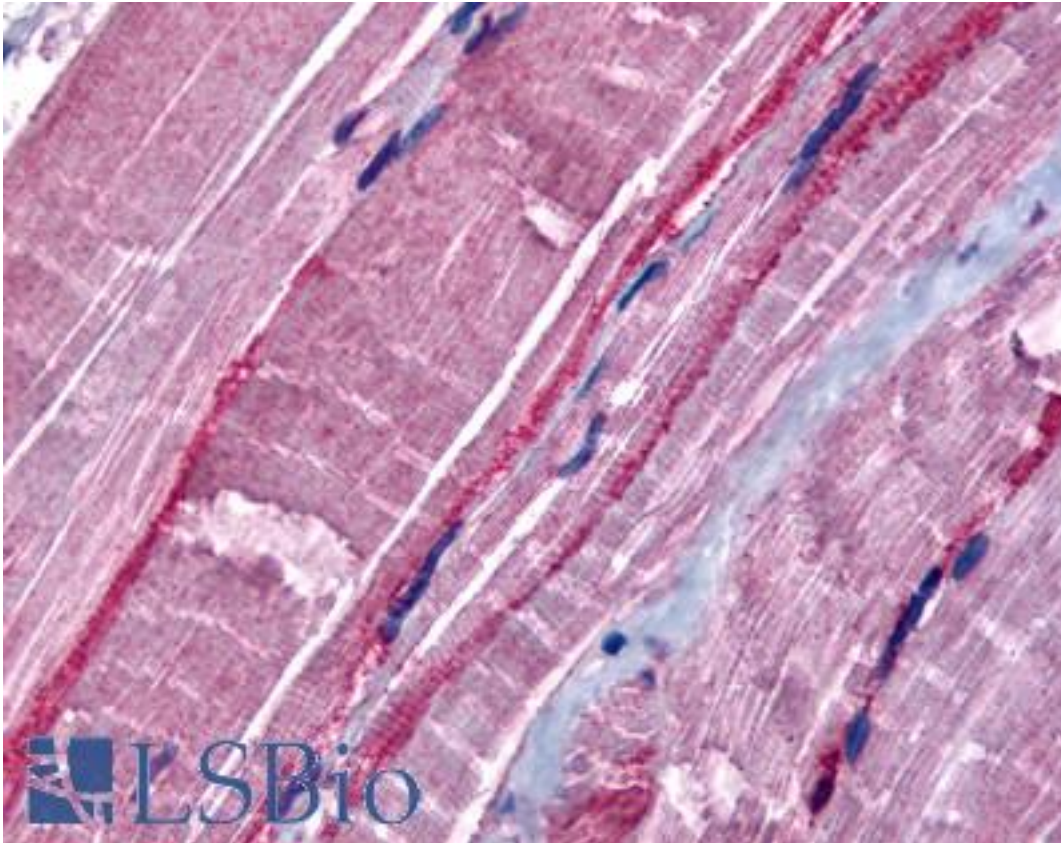


GRK5 Rabbit anti-Human Polyclonal (N-Terminus) Antibody - LS-A3400 - LSBio

CatalogID:	LS-A3400
Target:	G protein-coupled receptor kinase 5 (GRK5)
Synonyms:	GRK5 Antibody, FP2025 Antibody, GPRK5 Antibody
Family / Subfamily:	Protein Kinase / GPRK
Host	GRK5 antibody was produced in Rabbit
Clonality:	Polyclonal
Immunogen Species:	GRK5 antibody was raised against Human
Antigen Type:	Synthetic peptide
Immunogen:	GRK5 antibody was raised against synthetic 12 amino acid peptide from near N-terminus of human GRK5. Percent identity with other species by BLAST analysis: Human, Gorilla, Gibbon, Dog, Bovine (100%); Mouse, Rat, Pig (92%); Opossum, Chicken (83%).
Specificity:	Human GRK5. BLAST analysis of the peptide immunogen showed no homology with other human proteins.
Epitope:	N-Terminus
Reactivity:	Human, Gorilla, Gibbon, Bovine, Dog
Predicted Reactivity:	Mouse, Rat, Pig
Purification:	Immunoaffinity purified
Presentation:	PBS, 0.1% sodium azide.
Recommended Storage:	Long term: -70°C; Short term: +4°C
Uses:	IHC - Paraffin (5 µg/ml) (Optimal dilution to be determined by the researcher)
Size:	50 µg
Concentration:	1 mg/ml

Immunohistochemistry Image:



Anti-GRK5 antibody LS-A3400 IHC of human skeletal muscle. Immunohistochemistry of formalin-fixed, paraffin-embedded tissue after heat-induced antigen retrieval.

Requested From:

Japan

Laboratory Reagent For In Vitro Research Use Only

Not for resale without prior written consent from LifeSpan BioSciences, Inc.

Created on 9/23/2014

© 2014 LifeSpan BioSciences