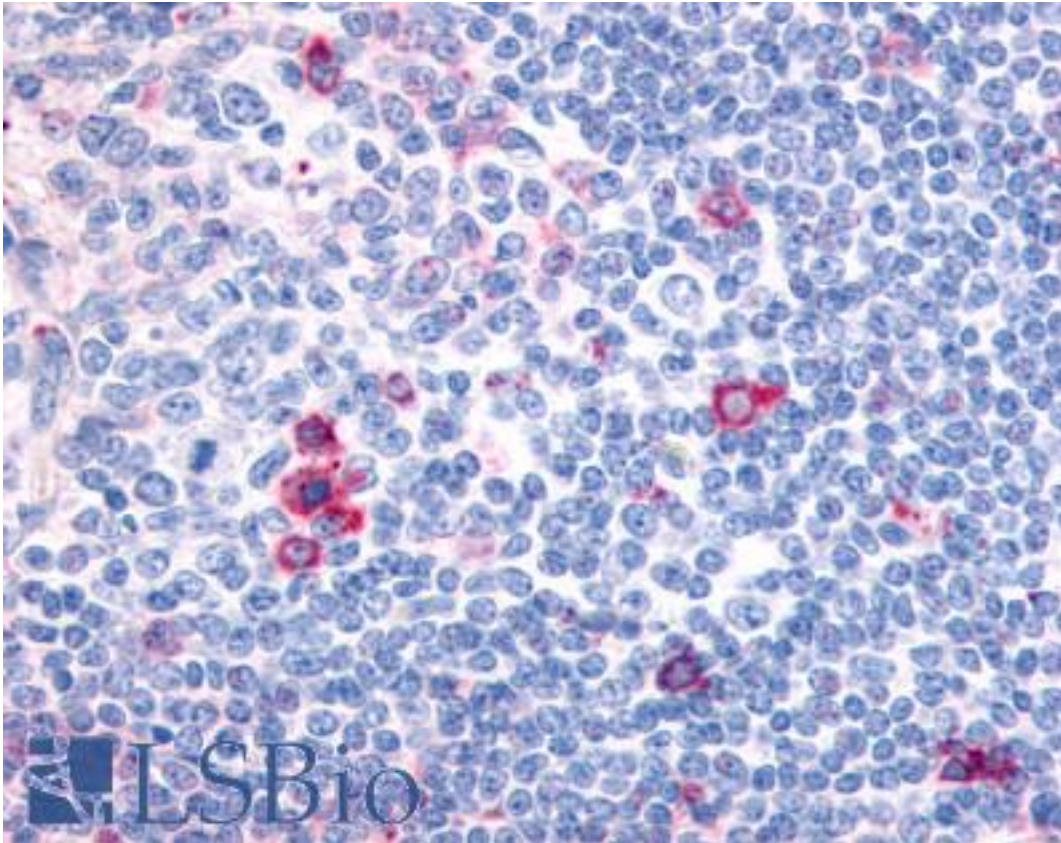


CNR2 / CB2 Rabbit anti-Human Polyclonal (Cytoplasmic Domain) Antibody - LS-A34 - LSBio	
CatalogID:	LS-A34
Target:	cannabinoid receptor 2 (macrophage) (CNR2)
Synonyms:	CNR2 Antibody, Cannabinoid receptor 2 Antibody, CB2 Antibody, CB2 cannabinoid receptor Antibody, CX5 Antibody, CB2R Antibody, HCB2 Antibody, Cannabinoid CB2 receptor Antibody, CB-2 Antibody, CB2 receptor Antibody
Family / Subfamily:	GPCR / Cannabinoid
Host	CNR2 antibody was produced in Rabbit
Clonality:	Polyclonal
Immunogen Species:	CNR2 / CB2 antibody was raised against Human
Antigen Type:	Synthetic peptide
Immunogen:	CNR2 / CB2 antibody was raised against synthetic 20 amino acid peptide from 3rd cytoplasmic domain of human CNR2 / CB2. Percent identity with other species by BLAST analysis: Human, Gorilla, Gibbon, Monkey, Marmoset, Dog (100%); Mouse, Rat, Elephant, Panda (95%); Hamster, Bat, Horse (90%); Rabbit (85%).
Specificity:	Human CNR2 / CB2. BLAST analysis of the peptide immunogen showed no homology with other human proteins, except CNR1 (60%).
Epitope:	Cytoplasmic Domain
Reactivity:	Human, Gorilla, Gibbon, Monkey, Dog
Predicted Reactivity:	Mouse, Rat, Bat, Hamster, Horse
Purification:	Immunoaffinity purified
Presentation:	PBS, 0.1% sodium azide.
Recommended Storage:	Long term: -70°C; Short term: +4°C
Uses:	IHC - Paraffin (13 - 26 µg/ml) (Optimal dilution to be determined by the researcher)
Size:	50 µg
Concentration:	1 mg/ml

Immunohistochemistry Image:



Anti-CNR2 / CB2 antibody LS-A34 IHC of human tonsil, germinal center and mantle zone. Immunohistochemistry of formalin-fixed, paraffin-embedded tissue after heat-induced antigen retrieval.

Requested From:

Japan

Laboratory Reagent For In Vitro Research Use Only

Not for resale without prior written consent from LifeSpan BioSciences, Inc.

Created on 9/23/2014

© 2014 LifeSpan BioSciences