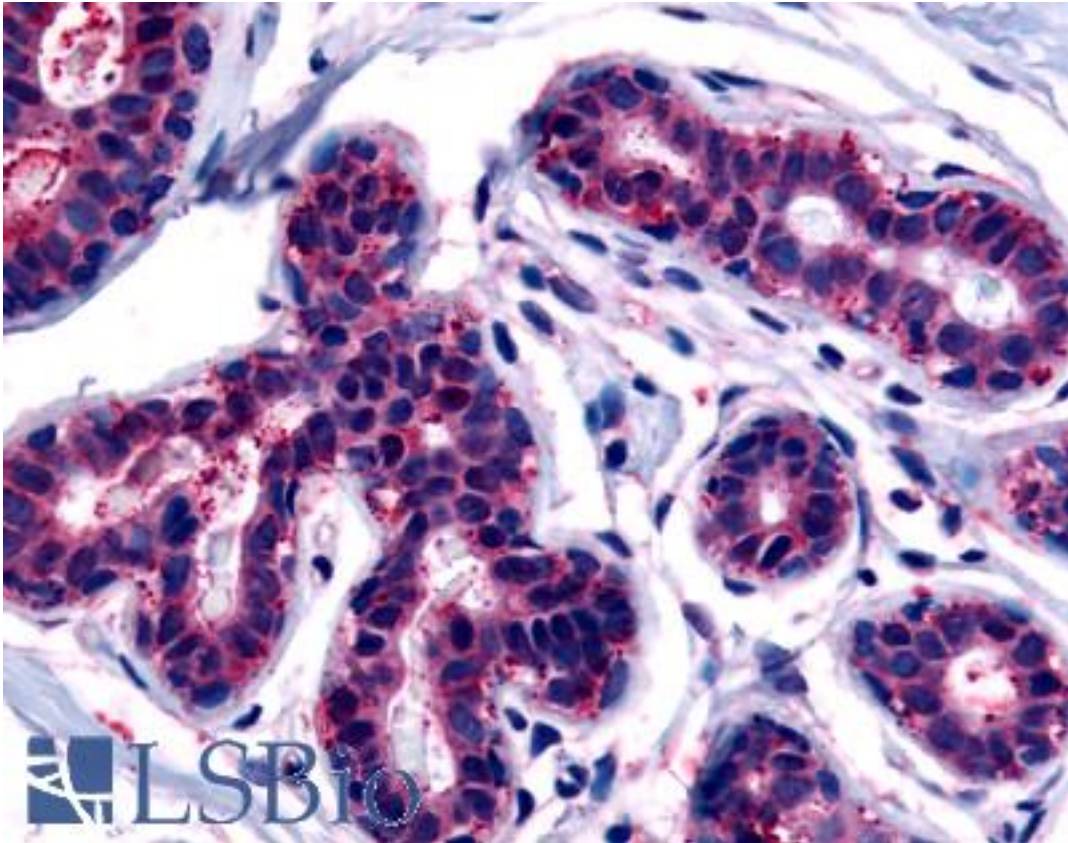


TRB3 / TRIB3 Rabbit anti-Human Polyclonal (C-Terminus) Antibody - LS-A3372 - LSBio

CatalogID:	LS-A3372
Target:	tribbles pseudokinase 3 (TRIB3)
Synonyms:	TRIB3 Antibody, C20orf97 Antibody, NIPK Antibody, SINK Antibody, TRB-3 Antibody, TRB3 Antibody, DJ1103G7.3 Antibody, SKIP3 Antibody, Tribbles homolog 3 Antibody
Host	TRIB3 antibody was produced in Rabbit
Clonality:	Polyclonal
Immunogen Species:	TRB3 / TRIB3 antibody was raised against Human
Antigen Type:	Synthetic peptide
Immunogen:	TRB3 / TRIB3 antibody was raised against synthetic 16 amino acid peptide from near C-terminus of human TRIB3. Percent identity with other species by BLAST analysis: Human, Gibbon, Monkey (100%); Gorilla, Marmoset, Panda, Dog, Bovine, Rabbit, Pig (94%); Elephant (88%); Mouse, Horse, Opossum (81%).
Specificity:	Human TRIB3. BLAST analysis of the peptide immunogen showed no homology with other human proteins, except TRIB2 (75%).
Epitope:	C-Terminus
Reactivity:	Human, Gibbon
Predicted Reactivity:	Gorilla, Monkey, Bovine, Dog, Pig, Rabbit
Purification:	Immunoaffinity purified
Presentation:	PBS, 0.1% sodium azide.
Recommended Storage:	Long term: -70°C; Short term: +4°C
Uses:	IHC - Paraffin (2 µg/ml) (Optimal dilution to be determined by the researcher)
Size:	50 µg
Concentration:	1 mg/ml

Immunohistochemistry Image:



Anti-TRIB3 antibody LS-A3372 IHC of human breast. Immunohistochemistry of formalin-fixed, paraffin-embedded tissue after heat-induced antigen retrieval.

Requested From:

Japan

Laboratory Reagent For In Vitro Research Use Only

Not for resale without prior written consent from LifeSpan BioSciences, Inc.

Created on 9/23/2014

© 2014 LifeSpan BioSciences