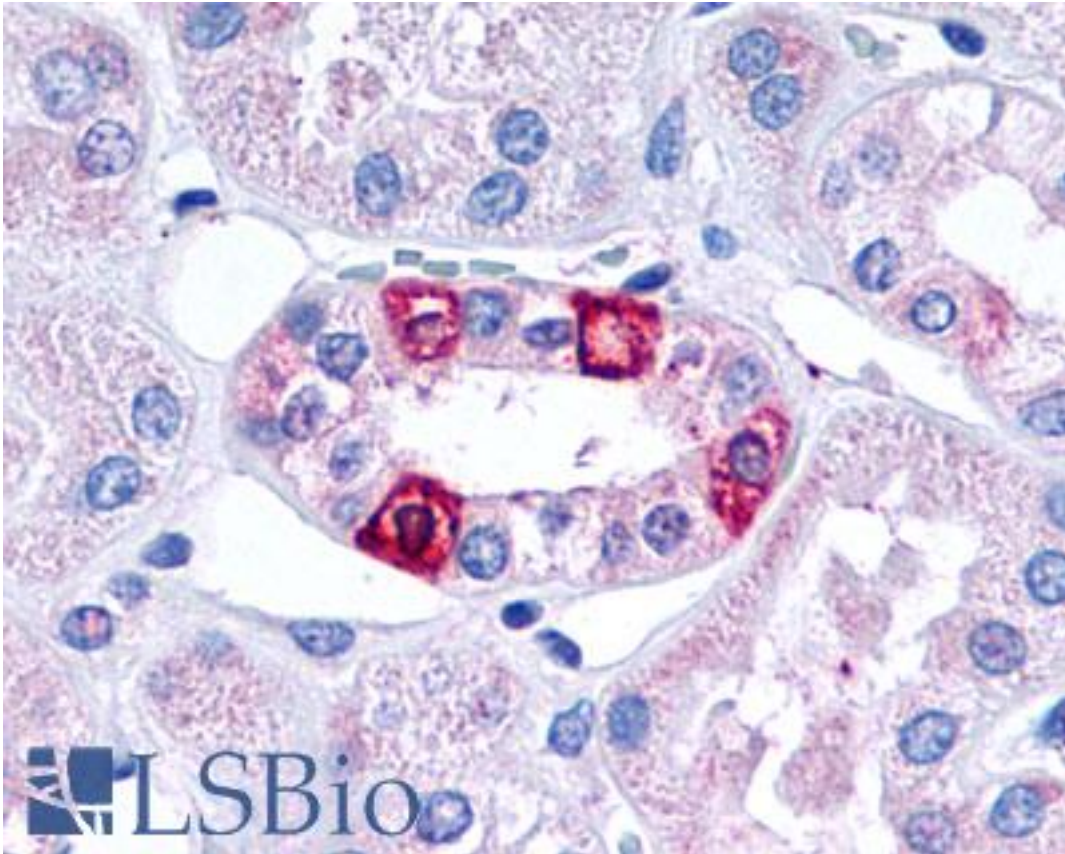


HTR1F / 5-HT1F Receptor Rabbit anti-Human Polyclonal (Cytoplasmic Domain) Antibody - LS-A3344 - LSBio

CatalogID:	LS-A3344
Target:	5-hydroxytryptamine (serotonin) receptor 1F, G protein-coupled (HTR1F)
Synonyms:	HTR1F Antibody, 5-HT1F Antibody, 5-HT1f receptor Antibody, 5HT1F Receptor Antibody, 5-HT-1F Antibody, 5HT6 Antibody, HTR1EL Antibody, MR77 Antibody, Serotonin 1f receptor Antibody, Serotonin 5-HT-1f receptor Antibody, Serotonin receptor 1F Antibody
Family / Subfamily:	GPCR / Serotonin
Host	HTR1F antibody was produced in Rabbit
Clonality:	Polyclonal
Immunogen Species:	HTR1F / 5-HT1F Receptor antibody was raised against Human
Antigen Type:	Synthetic peptide
Immunogen:	HTR1F / 5-HT1F Receptor antibody was raised against synthetic 19 amino acid peptide from 3rd cytoplasmic domain of human 5HT1F Receptor. Percent identity with other species by BLAST analysis: Human, Chimpanzee, Gorilla, Orangutan, Monkey, Panda, Bat (100%); Gibbon, Mouse, Rat, Hamster, Elephant, Dog, Bovine, Rabbit (95%); Horse (89%).
Specificity:	Human 5HT1F Receptor. BLAST analysis of the peptide immunogen showed no homology with other human proteins, except TPRXL (47%).
Epitope:	Cytoplasmic Domain
Reactivity:	Human, Chimpanzee, Gorilla, Orangutan, Monkey, Bat
Predicted Reactivity:	Gibbon, Mouse, Rat, Bovine, Dog, Hamster, Rabbit
Purification:	Immunoaffinity purified
Presentation:	PBS, 0.1% sodium azide.
Recommended Storage:	Long term: -70°C; Short term: +4°C
Uses:	IHC - Paraffin (6 - 9 µg/ml) (Optimal dilution to be determined by the researcher)
Size:	50 µg
Concentration:	1 mg/ml

Immunohistochemistry Image:



Anti-5HT1F Receptor antibody LS-A3344 IHC of human kidney, renal tubules.
Immunohistochemistry of formalin-fixed, paraffin-embedded tissue after heat-induced antigen retrieval.

Requested From:

Japan

Laboratory Reagent For In Vitro Research Use Only

Not for resale without prior written consent from LifeSpan BioSciences, Inc.

Created on 9/23/2014

© 2014 LifeSpan BioSciences