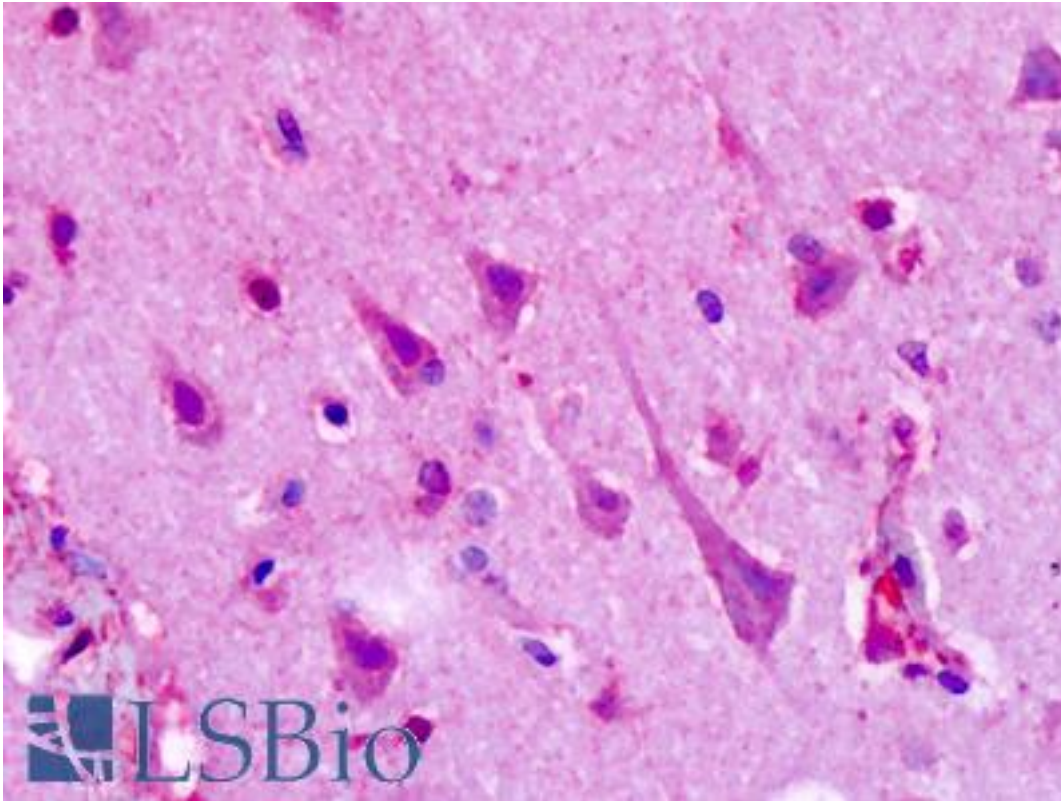


HTR1F / 5-HT1F Receptor Rabbit anti-Human Polyclonal (C-Terminus) Antibody - LS-A3343 - LSBio	
CatalogID:	LS-A3343
Target:	5-hydroxytryptamine (serotonin) receptor 1F, G protein-coupled (HTR1F)
Synonyms:	HTR1F Antibody, 5-HT1F Antibody, 5-HT1f receptor Antibody, 5HT1F Receptor Antibody, 5-HT-1F Antibody, 5HT6 Antibody, HTR1EL Antibody, MR77 Antibody, Serotonin 1f receptor Antibody, Serotonin 5-HT-1f receptor Antibody, Serotonin receptor 1F Antibody
Family / Subfamily:	GPCR / Serotonin
Host	HTR1F antibody was produced in Rabbit
Clonality:	Polyclonal
Immunogen Species:	HTR1F / 5-HT1F Receptor antibody was raised against Human
Antigen Type:	Synthetic peptide
Immunogen:	HTR1F / 5-HT1F Receptor antibody was raised against synthetic 17 amino acid peptide from C-terminus of human 5HT1F Receptor. Percent identity with other species by BLAST analysis: Human, Chimpanzee, Gorilla, Orangutan, Gibbon, Monkey, Mouse, Rat, Hamster, Elephant, Panda, Dog, Bovine, Bat, Rabbit, Guinea pig, Turkey, Chicken, Platypus (100%); Xenopus, Stickleback, Pufferfish (94%); Opossum, Lizard (88%); Horse (82%).
Specificity:	Human 5HT1F Receptor. BLAST analysis of the peptide immunogen showed no homology with other human proteins, except HTR1E (71%), HTR1D (59%), HTR1B (59%).
Epitope:	C-Terminus
Reactivity:	Human, Chimpanzee, Gorilla, Orangutan, Gibbon, Monkey, Mouse, Rat, Bat, Bovine, Dog, Guinea pig, Hamster, Rabbit, Chicken
Predicted Reactivity:	Xenopus
Purification:	Immunoaffinity purified
Presentation:	PBS, 0.1% sodium azide.
Recommended Storage:	Long term: -70°C; Short term: +4°C
Uses:	IHC - Paraffin (2 - 3 µg/ml) (Optimal dilution to be determined by the researcher)
Size:	50 µg
Concentration:	1 mg/ml

Immunohistochemistry Image:



Anti-HTR1F / 5-HT1F antibody IHC of human brain, cortex, neurons. Immunohistochemistry of formalin-fixed, paraffin-embedded tissue after heat-induced antigen retrieval. Antibody LS-A3343 dilution 2-3 ug/ml.

Requested From:

Japan

Laboratory Reagent For In Vitro Research Use Only

Not for resale without prior written consent from LifeSpan BioSciences, Inc.

Created on 9/23/2014

© 2014 LifeSpan BioSciences