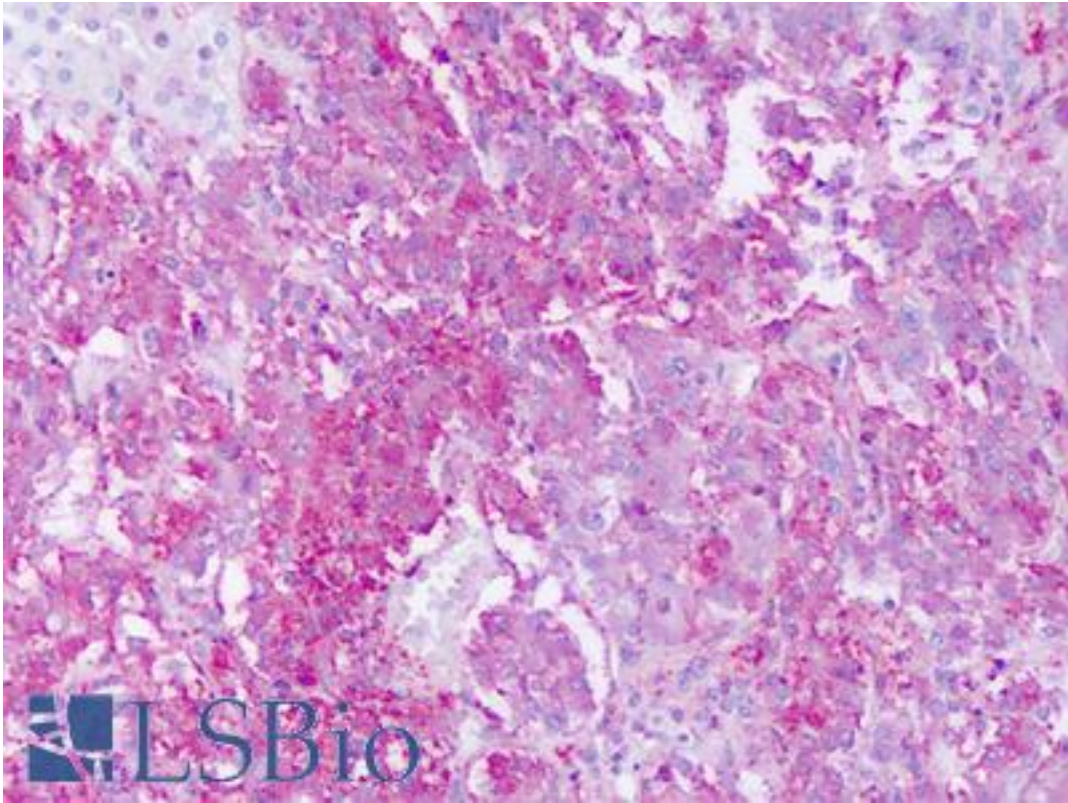


GPR161 Rabbit anti-Human Polyclonal (Cytoplasmic Domain) Antibody - LS-A332 - LSBio

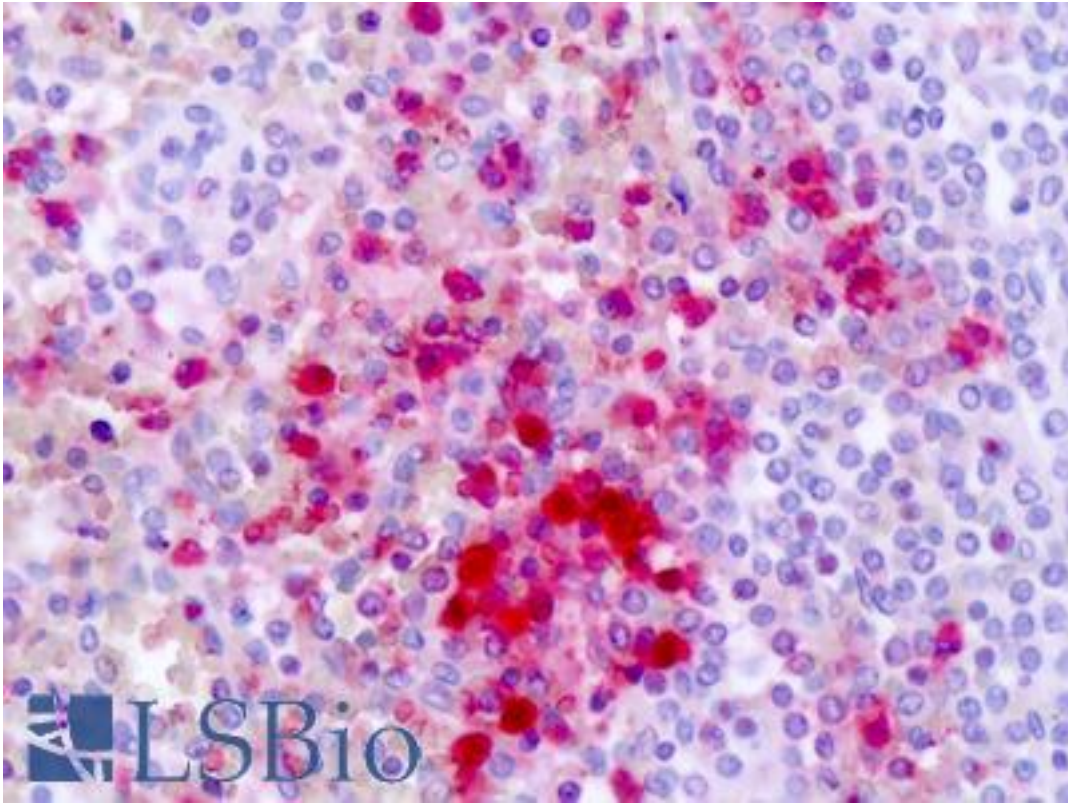
CatalogID:	LS-A332
Target:	G protein-coupled receptor 161 (GPR161)
Synonyms:	GPR161 Antibody, G-protein coupled receptor 161 Antibody, G protein-coupled receptor 161 Antibody, G-protein coupled receptor RE2 Antibody, RE2 Antibody
Family / Subfamily:	GPCR / Orphan-U
Host	GPR161 antibody was produced in Rabbit
Clonality:	Polyclonal
Immunogen Species:	GPR161 antibody was raised against Human
Antigen Type:	Synthetic peptide
Immunogen:	GPR161 antibody was raised against synthetic 19 amino acid peptide from 3rd cytoplasmic domain of human GPR161. Percent identity with other species by BLAST analysis: Human, Gorilla, Gibbon, Monkey, Marmoset, Hamster (100%); Panda, Dog, Horse, Rabbit (95%); Mouse, Elephant, Bat, Pig, Opossum, Turkey, Chicken (89%).
Specificity:	Human GPR161. BLAST analysis of the peptide immunogen showed no homology with other human proteins, except MAGEA10 (63%).
Epitope:	Cytoplasmic Domain
Reactivity:	Human, Gorilla, Gibbon, Monkey, Hamster
Predicted Reactivity:	Dog, Horse, Rabbit
Purification:	Immunoaffinity purified
Presentation:	PBS, 0.1% sodium azide.
Recommended Storage:	Long term: -70°C; Short term: +4°C
Uses:	IHC - Paraffin (2 - 3 µg/ml) (Optimal dilution to be determined by the researcher)
Size:	50 µg
Concentration:	1 mg/ml

Immunohistochemistry Image:



Anti-GPR161 antibody IHC of human adrenal. Immunohistochemistry of formalin-fixed, paraffin-embedded tissue after heat-induced antigen retrieval. Antibody LS-A332 dilution 2-3 ug/ml.

Immunohistochemistry Image:



Anti-GPR161 antibody IHC of human spleen. Immunohistochemistry of formalin-fixed, paraffin-embedded tissue after heat-induced antigen retrieval. Antibody LS-A332 dilution 2-3 ug/ml.

Requested From:

Japan

Laboratory Reagent For In Vitro Research Use Only

Not for resale without prior written consent from LifeSpan BioSciences, Inc.

Created on 9/23/2014

© 2014 LifeSpan BioSciences