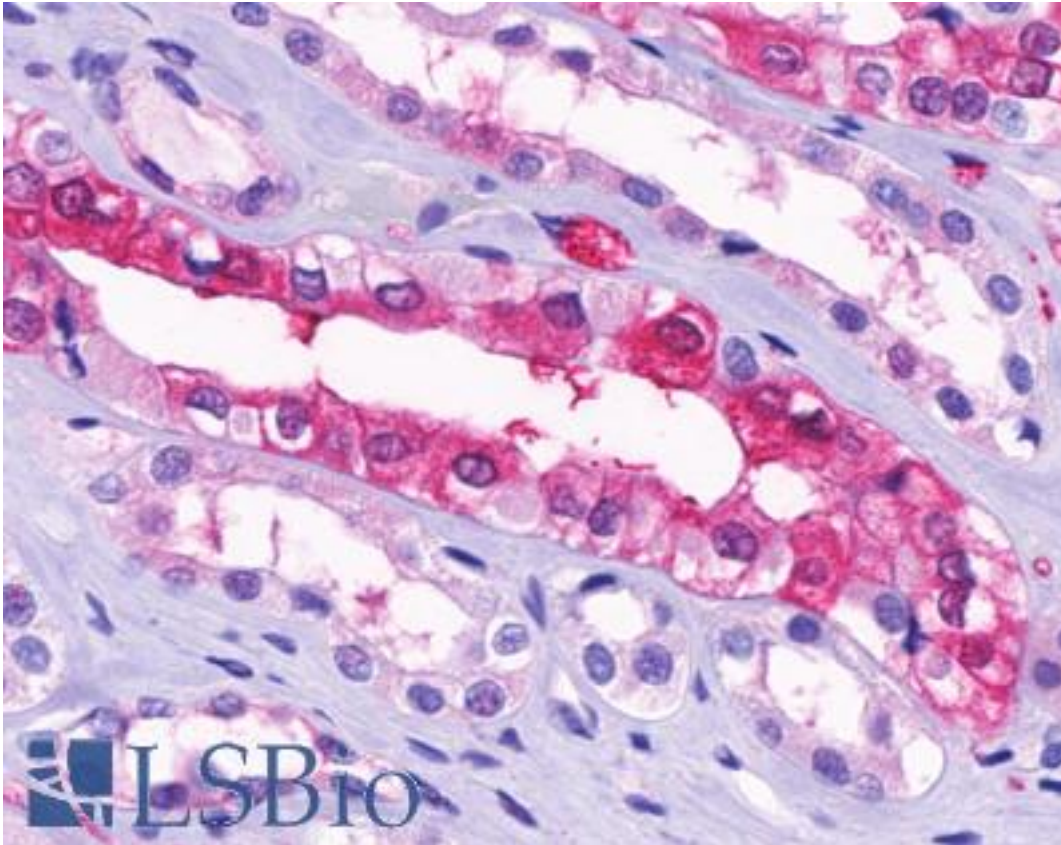


SUCNR1 / GPR91 Rabbit anti-Human Polyclonal (Cytoplasmic Domain) Antibody - LS-A3315 - LSBio

CatalogID:	LS-A3315
Target:	succinate receptor 1 (SUCNR1)
Synonyms:	SUCNR1 Antibody, G protein-coupled receptor 91 Antibody, GPR91 Antibody, p2Y purinoceptor 1-like Antibody, p2Y purinoceptor 1 Antibody, Succinate receptor 1 Antibody, G-protein coupled receptor 91 Antibody, p2u2 Antibody
Family / Subfamily:	GPCR / Purinergic
Host	SUCNR1 antibody was produced in Rabbit
Clonality:	Polyclonal
Immunogen Species:	SUCNR1 / GPR91 antibody was raised against Human
Antigen Type:	Synthetic peptide
Immunogen:	SUCNR1 / GPR91 antibody was raised against synthetic 15 amino acid peptide from 2nd cytoplasmic domain of human GPR91. Percent identity with other species by BLAST analysis: Human, Gorilla, Gibbon, Monkey, Marmoset (100%); Mouse, Hamster, Panda, Rabbit, Horse (93%); Rat, Bovine, Platypus (87%); Dog (80%).
Specificity:	Human GPR91. BLAST analysis of the peptide immunogen showed no homology with other human proteins.
Epitope:	Cytoplasmic Domain
Reactivity:	Human, Gorilla, Gibbon, Monkey
Predicted Reactivity:	Mouse, Hamster, Horse, Rabbit
Purification:	Immunoaffinity purified
Presentation:	PBS, 0.1% sodium azide.
Recommended Storage:	Long term: -70°C; Short term: +4°C
Uses:	IHC - Paraffin (3 µg/ml) (Optimal dilution to be determined by the researcher)
Size:	50 µg
Concentration:	1 mg/ml

Immunohistochemistry Image:



Anti-GPR91 antibody LS-A3315 IHC of human kidney, medulla. Immunohistochemistry of formalin-fixed, paraffin-embedded tissue after heat-induced antigen retrieval.

Requested From:

Japan

Laboratory Reagent For In Vitro Research Use Only

Not for resale without prior written consent from LifeSpan BioSciences, Inc.

Created on 9/23/2014

© 2014 LifeSpan BioSciences