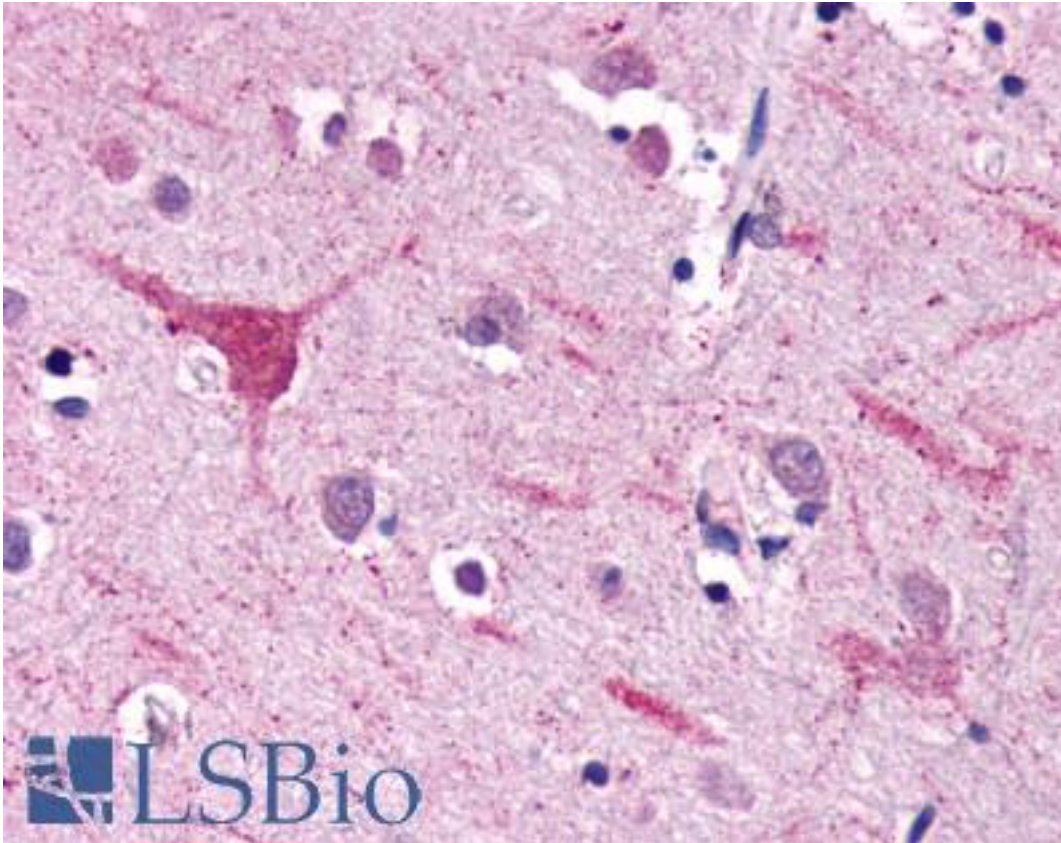


NPFF2 / NPFFR2 Rabbit anti-Human Polyclonal (Extracellular Domain) Antibody - LS-A3302 - LSBio

CatalogID:	LS-A3302
Target:	neuropeptide FF receptor 2 (NPFFR2)
Synonyms:	NPFFR2 Antibody, G protein-coupled receptor 74 Antibody, HLWAR77 Antibody, G-protein coupled receptor 74 Antibody, Neuropeptide FF receptor 2 Antibody, Neuropeptide FF 2 Antibody, NPFF2 Antibody, Neuropeptide FF 2 receptor Antibody, NPGPR Antibody, GPR74 Antibody, NPFF-R2 Antibody, NPFF2 receptor Antibody, NPGP receptor Antibody
Family / Subfamily:	GPCR / Neuropeptide
Host	NPFFR2 antibody was produced in Rabbit
Clonality:	Polyclonal
Immunogen Species:	NPFF2 / NPFFR2 antibody was raised against Human
Antigen Type:	Synthetic peptide
Immunogen:	NPFF2 / NPFFR2 antibody was raised against synthetic 18 amino acid peptide from 3rd extracellular domain of human NPFFR2. Percent identity with other species by BLAST analysis: Human, Gorilla, Gibbon, Marmoset, Horse (100%); Monkey, Elephant, Rabbit, Pig (94%); Dog, Bovine (89%); Mouse, Rat, Panda, Bat (83%).
Specificity:	Human NPFFR2. BLAST analysis of the peptide immunogen showed no homology with other human proteins.
Epitope:	Extracellular Domain
Reactivity:	Human, Gorilla, Gibbon, Horse
Predicted Reactivity:	Monkey, Pig, Rabbit
Purification:	Immunoaffinity purified
Presentation:	PBS, 0.1% sodium azide.
Recommended Storage:	Long term: -70°C; Short term: +4°C
Uses:	IHC - Paraffin (16 µg/ml) (Optimal dilution to be determined by the researcher)
Size:	50 µg
Concentration:	1 mg/ml

Immunohistochemistry Image:



Anti-NPFFR2 antibody LS-A3302 IHC of human brain, neurons and glia.
Immunohistochemistry of formalin-fixed, paraffin-embedded tissue after heat-induced antigen retrieval.

Requested From:

Japan

Laboratory Reagent For In Vitro Research Use Only

Not for resale without prior written consent from LifeSpan BioSciences, Inc.

Created on 9/23/2014

© 2014 LifeSpan BioSciences