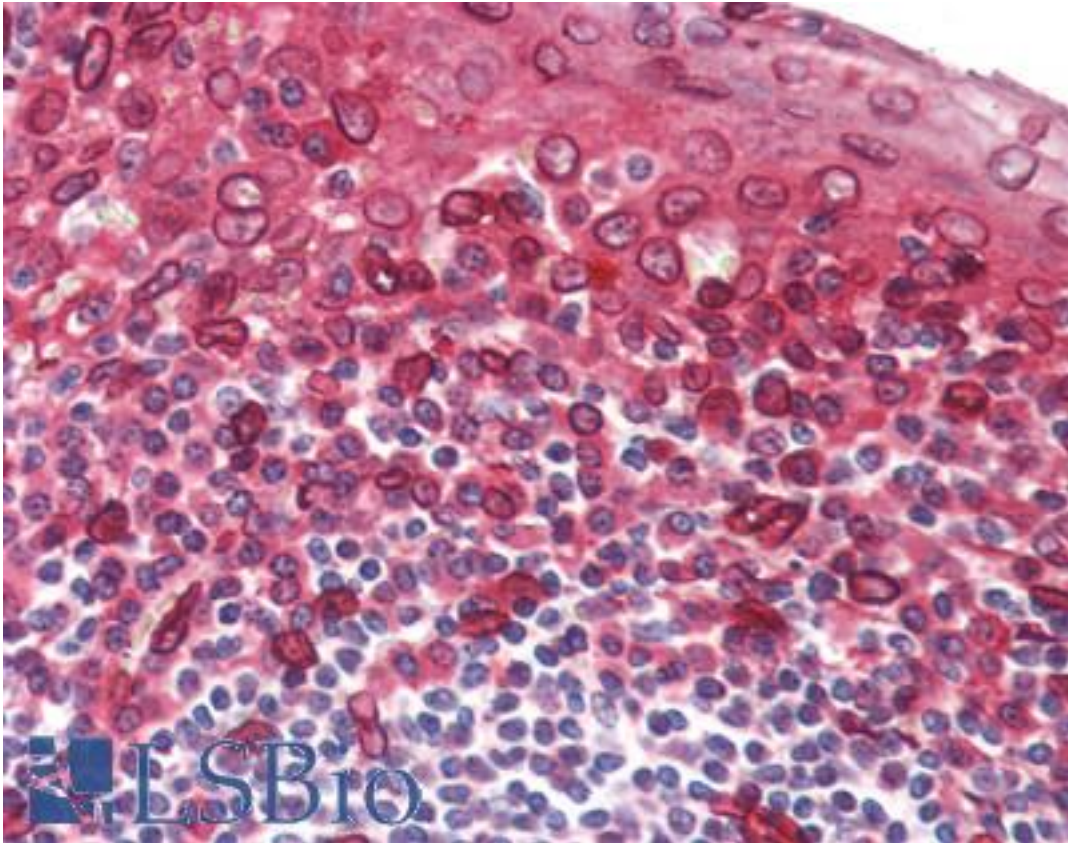


TAAR5 Rabbit anti-Human Polyclonal (C-Terminus) Antibody - LS-A321 - LSBio

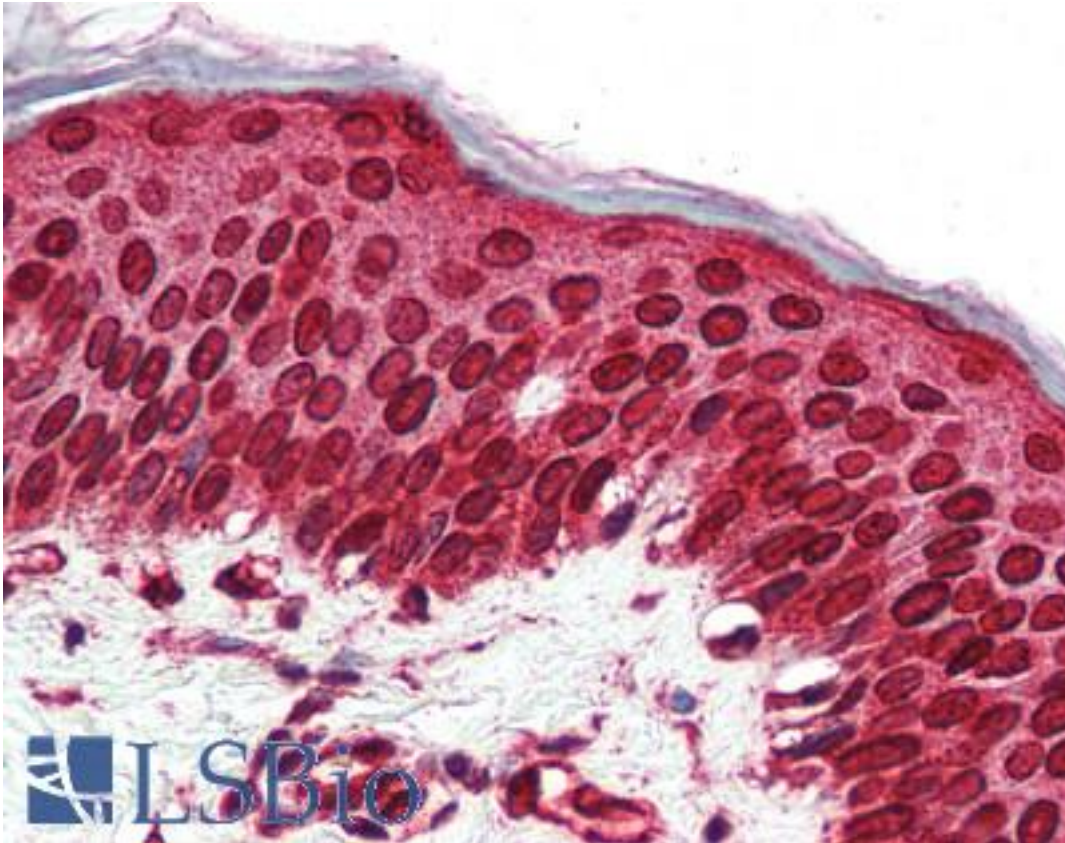
CatalogID:	LS-A321
Target:	trace amine associated receptor 5 (TAAR5)
Synonyms:	TAAR5 Antibody, PNR Antibody, RP11-295F4.5 Antibody, Trace amine receptor 5 Antibody, TaR-5 Antibody
Family / Subfamily:	GPCR / Trace Amine Associated Receptor
Host	TAAR5 antibody was produced in Rabbit
Clonality:	Polyclonal
Immunogen Species:	TAAR5 antibody was raised against Human
Antigen Type:	Synthetic peptide
Immunogen:	TAAR5 antibody was raised against synthetic 18 amino acid peptide from C-Terminus of human TAAR5. Percent identity with other species by BLAST analysis: Human, Chimpanzee (100%); Gorilla, Gibbon, Baboon, Monkey (94%); Orangutan (89%); Marmoset, Tamarin (83%).
Specificity:	Human TAAR5. BLAST analysis of the peptide immunogen showed no homology with other human proteins.
Epitope:	C-Terminus
Reactivity:	Human, Chimpanzee
Predicted Reactivity:	Gorilla, Gibbon, Monkey
Purification:	Immunoaffinity purified
Presentation:	PBS, 0.1% sodium azide.
Recommended Storage:	Long term: -70°C; Short term: +4°C
Usage Summary:	Immunohistochemistry: LS-A321 was validated for use in immunohistochemistry on a panel of 21 formalin-fixed, paraffin-embedded (FFPE) human tissues after proteinase K antigen retrieval. After incubation with the primary antibody, slides were incubated with biotinylated secondary antibody, followed by alkaline phosphatase-streptavidin and chromogen. The stained slides were evaluated by a pathologist to confirm staining specificity. The optimal working concentration for LS-A321 was determined to be 10 ug/ml.
Uses:	IHC - Paraffin (10 µg/ml), ELISA (Optimal dilution to be determined by the researcher)
Size:	50 µg
Concentration:	1 mg/ml

Immunohistochemistry Image:



Anti-TAAR5 antibody LS-A321 IHC of human tonsil. Immunohistochemistry of formalin-fixed, paraffin-embedded tissue after heat-induced antigen retrieval.

Immunohistochemistry Image:



Anti-TAAR5 antibody LS-A321 IHC of human skin. Immunohistochemistry of formalin-fixed, paraffin-embedded tissue after heat-induced antigen retrieval.

Requested From:

Japan

Laboratory Reagent For In Vitro Research Use Only

Not for resale without prior written consent from LifeSpan BioSciences, Inc.

Created on 9/23/2014

© 2014 LifeSpan BioSciences