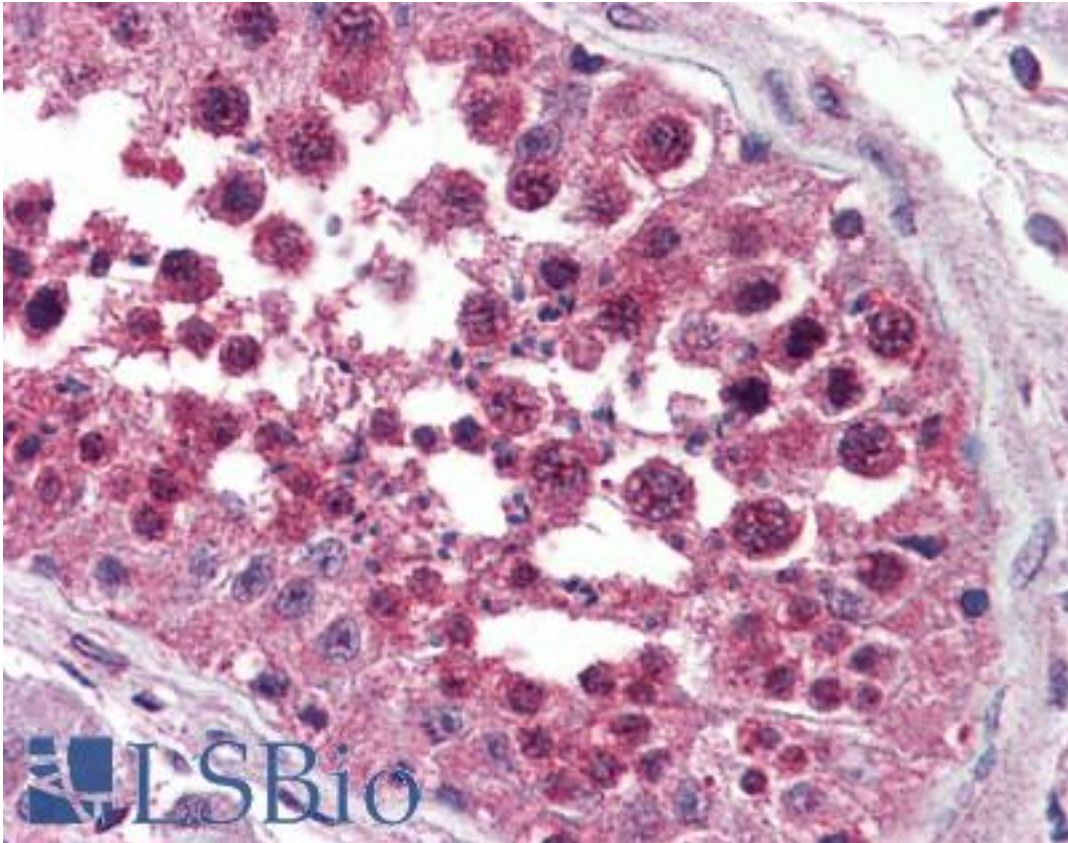


NPSR1 / NPSR / GPR154 Rabbit anti-Human Polyclonal (Extracellular Domain) Antibody - LS-A3201 - LSBio

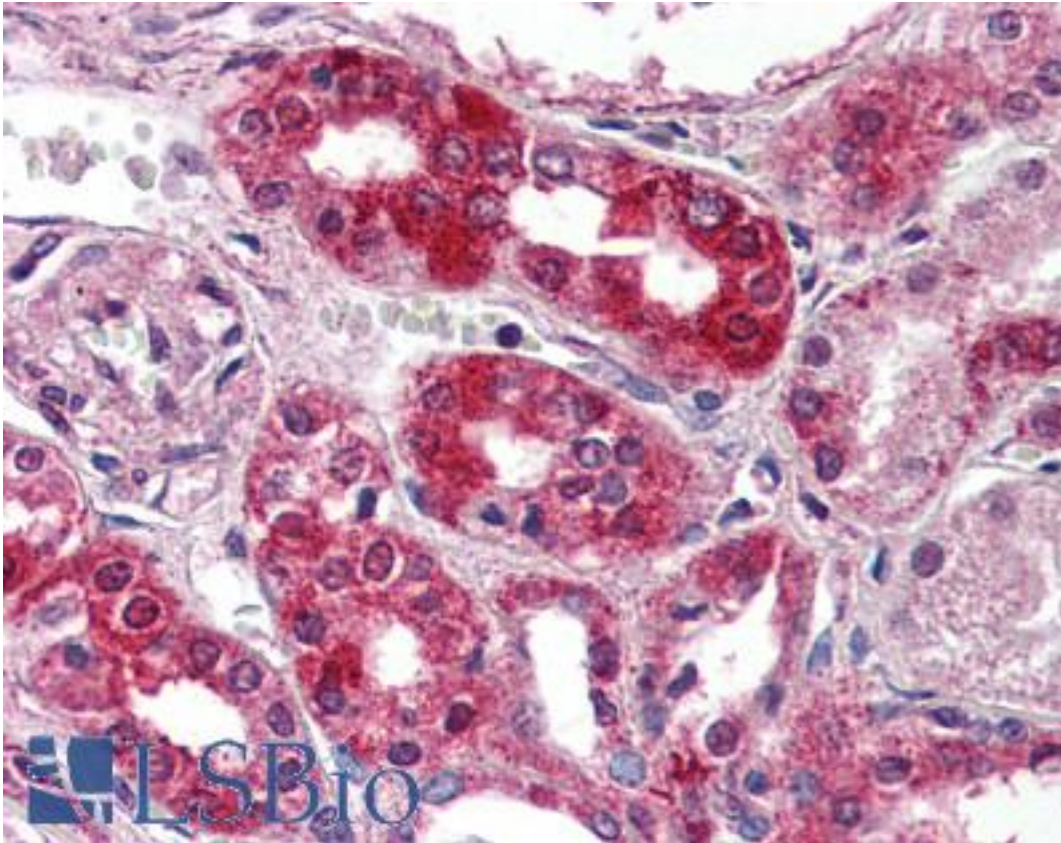
<b>CatalogID:</b>	LS-A3201
<b>Target:</b>	neuropeptide S receptor 1 (NPSR1)
<b>Synonyms:</b>	NPSR1 Antibody, ASRT2 Antibody, G protein-coupled receptor 154 Antibody, G-protein coupled receptor 154 Antibody, GPR154 Antibody, Neuropeptide S receptor 1 Antibody, NPSR Antibody, PGR14 Antibody, GPRA Antibody, Neuropeptide S receptor Antibody, VRR1 Antibody
<b>Family / Subfamily:</b>	GPCR / Vasopressin/oxytocin
<b>Host</b>	NPSR1 antibody was produced in Rabbit
<b>Clonality:</b>	Polyclonal
<b>Immunogen Species:</b>	NPSR1 / NPSR / GPR154 antibody was raised against Human
<b>Antigen Type:</b>	Synthetic peptide
<b>Immunogen:</b>	NPSR1 / NPSR / GPR154 antibody was raised against synthetic 18 amino acid peptide from 2nd extracellular domain of human NPSR1. Percent identity with other species by BLAST analysis: Human, Gorilla, Gibbon, Monkey, Marmoset, Mouse, Rat, Hamster (100%); Elephant, Panda, Bovine, Bat, Pig, Turkey, Chicken (94%); Dog, Opossum, Lizard (89%); Horse, Platypus (83%).
<b>Specificity:</b>	Human NPSR1. BLAST analysis of the peptide immunogen showed no homology with other human proteins.
<b>Epitope:</b>	Extracellular Domain
<b>Reactivity:</b>	Human, Gorilla, Gibbon, Monkey, Mouse, Rat, Hamster
<b>Predicted Reactivity:</b>	Bat, Bovine, Pig, Chicken
<b>Purification:</b>	Immunoaffinity purified
<b>Presentation:</b>	PBS, 0.1% sodium azide.
<b>Recommended Storage:</b>	Long term: -70°C; Short term: +4°C
<b>Usage Summary:</b>	Proteinase K treatment is required for antigen retrieval.
<b>Uses:</b>	IHC - Paraffin (5 µg/ml) (Optimal dilution to be determined by the researcher)
<b>Size:</b>	50 µg
<b>Concentration:</b>	1 mg/ml

**Immunohistochemistry Image:**



Anti-NPSR1 antibody LS-A3201 IHC of human testis. Immunohistochemistry of formalin-fixed, paraffin-embedded tissue after heat-induced antigen retrieval.

**Immunohistochemistry Image:**



Anti-NPSR1 antibody LS-A3201 IHC of human kidney. Immunohistochemistry of formalin-fixed, paraffin-embedded tissue after heat-induced antigen retrieval.

**Requested From:**

Japan

Laboratory Reagent For In Vitro Research Use Only

Not for resale without prior written consent from LifeSpan BioSciences, Inc.

Created on 9/23/2014

© 2014 LifeSpan BioSciences