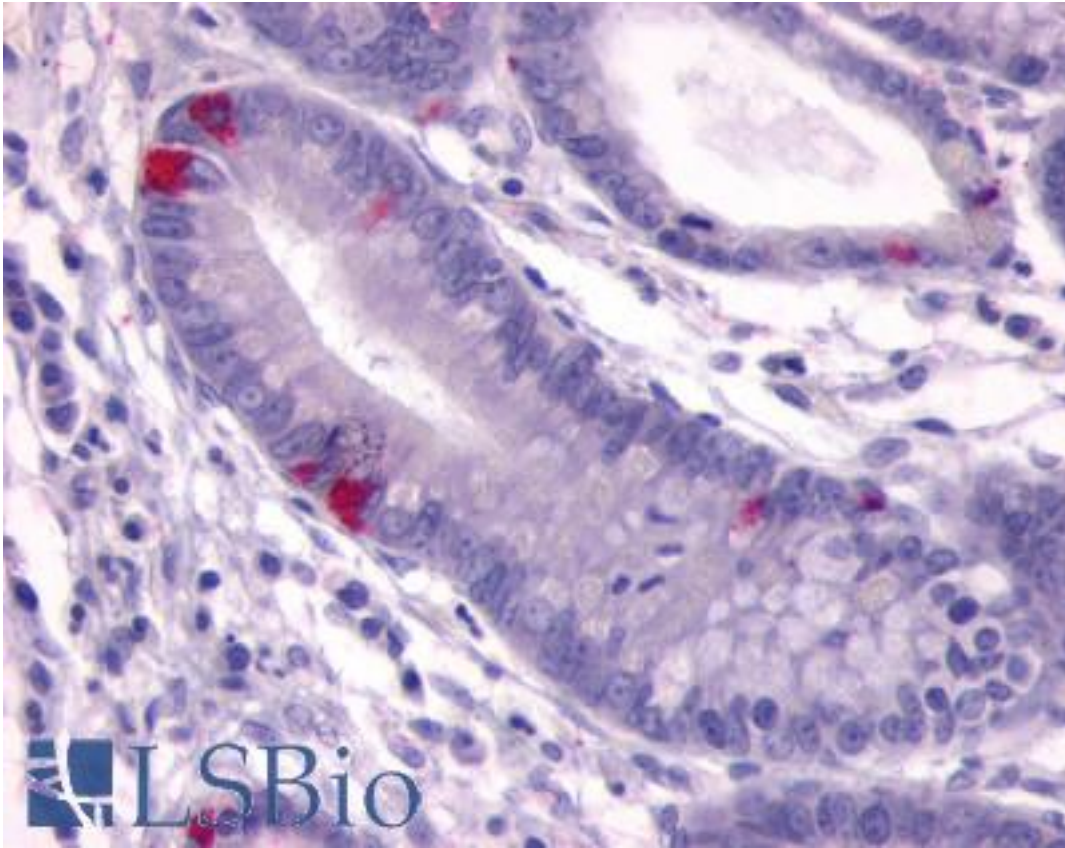


GPR148 Rabbit anti-Human Polyclonal (C-Terminus) Antibody - LS-A3181 - LSBio

| | |
|------------------------------|---|
| CatalogID: | LS-A3181 |
| Target: | G protein-coupled receptor 148 (GPR148) |
| Synonyms: | GPR148 Antibody, BTR Antibody, G protein-coupled receptor 148 Antibody, PGR6 Antibody |
| Family / Subfamily: | GPCR / Orphan-A |
| Host | GPR148 antibody was produced in Rabbit |
| Clonality: | Polyclonal |
| Immunogen Species: | GPR148 antibody was raised against Human |
| Antigen Type: | Synthetic peptide |
| Immunogen: | GPR148 antibody was raised against synthetic 14 amino acid peptide from C-terminus of human GPR148. Percent identity with other species by BLAST analysis: Human, Gorilla, Monkey (100%); Gibbon (93%). |
| Specificity: | Human GPR148. BLAST analysis of the peptide immunogen showed no homology with other human proteins. |
| Epitope: | C-Terminus |
| Reactivity: | Human, Gorilla, Monkey |
| Predicted Reactivity: | Gibbon |
| Purification: | Immunoaffinity purified |
| Presentation: | PBS, 0.1% sodium azide. |
| Recommended Storage: | Long term: -70°C; Short term: +4°C |
| Uses: | IHC - Paraffin (9 - 18 µg/ml) (Optimal dilution to be determined by the researcher) |
| Size: | 50 µg |
| Concentration: | 1 mg/ml |

Immunohistochemistry Image:



Anti-GPR148 antibody LS-A3181 IHC of human small intestine, crypts.
Immunohistochemistry of formalin-fixed, paraffin-embedded tissue after heat-induced antigen retrieval.

Requested From:

Japan

Laboratory Reagent For In Vitro Research Use Only

Not for resale without prior written consent from LifeSpan BioSciences, Inc.

Created on 9/23/2014

© 2014 LifeSpan BioSciences