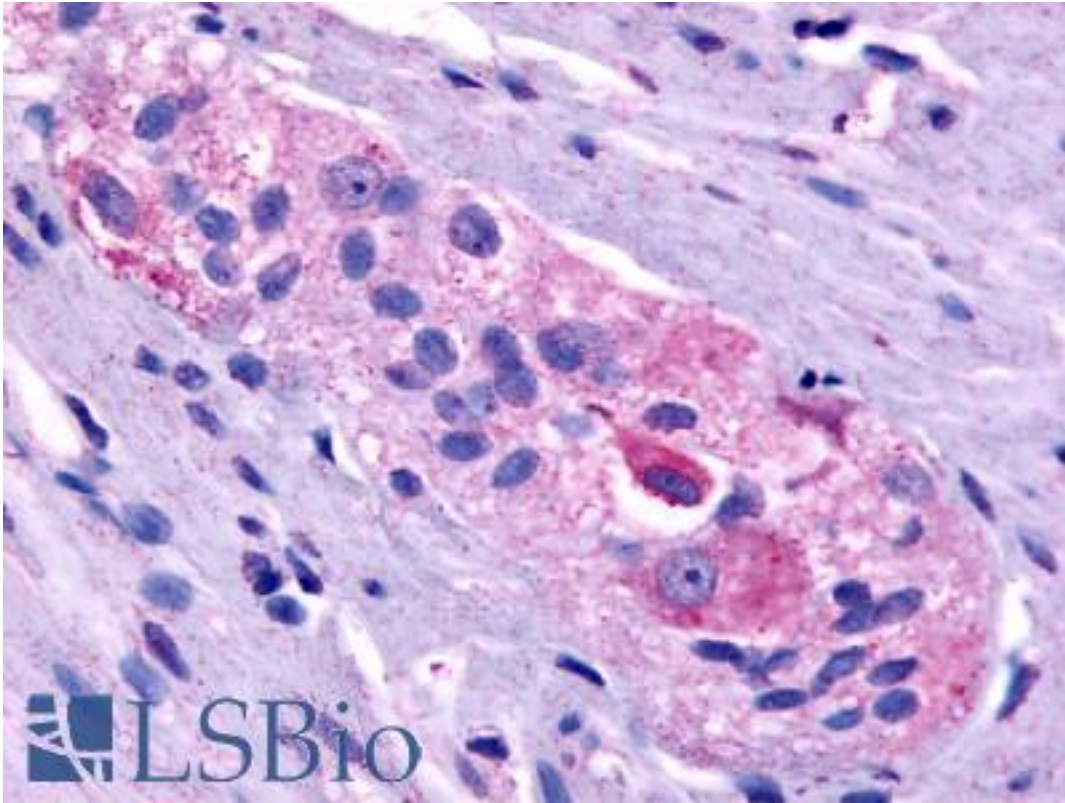


PROKR1 Rabbit anti-Human Polyclonal (C-Terminus) Antibody - LS-A3152 - LSBio

<b>CatalogID:</b>	LS-A3152
<b>Target:</b>	prokineticin receptor 1 (PROKR1)
<b>Synonyms:</b>	PROKR1 Antibody, G protein-coupled receptor 73 Antibody, GPCR73A Antibody, G protein-coupled receptor ZAQ Antibody, G-protein coupled receptor 73 Antibody, G-protein coupled receptor ZAQ Antibody, GPR73 Antibody, GPR73a Antibody, PK-R1 Antibody, Prokineticin receptor 1 Antibody, EG-VEGF receptor Antibody, PKR1 Antibody, ZAQ Antibody
<b>Family / Subfamily:</b>	GPCR / Prokineticin
<b>Host</b>	PROKR1 antibody was produced in Rabbit
<b>Clonality:</b>	Polyclonal
<b>Immunogen Species:</b>	PROKR1 antibody was raised against Human
<b>Antigen Type:</b>	Synthetic peptide
<b>Immunogen:</b>	PROKR1 antibody was raised against synthetic 19 amino acid peptide from C-terminus of human PROKR1. Percent identity with other species by BLAST analysis: Human, Gorilla, Gibbon, Monkey (100%); Horse (95%); Elephant, Panda, Bovine (89%); Marmoset, Dog, Opossum (84%).
<b>Specificity:</b>	Human PROKR1. BLAST analysis of the peptide immunogen showed no homology with other human proteins, except PROKR2 (68%).
<b>Epitope:</b>	C-Terminus
<b>Reactivity:</b>	Human, Gorilla, Gibbon, Monkey
<b>Predicted Reactivity:</b>	Horse
<b>Purification:</b>	Immunoaffinity purified
<b>Presentation:</b>	PBS, 0.1% sodium azide.
<b>Recommended Storage:</b>	Long term: -70°C; Short term: +4°C
<b>Uses:</b>	IHC - Paraffin (13 µg/ml) (Optimal dilution to be determined by the researcher)
<b>Size:</b>	50 µg
<b>Concentration:</b>	1 mg/ml

**Immunohistochemistry Image:**



Anti-PROKR1 antibody LS-A3152 IHC of human colon. Immunohistochemistry of formalin-fixed, paraffin-embedded tissue after heat-induced antigen retrieval.

**Requested From:**

Japan

Laboratory Reagent For In Vitro Research Use Only

Not for resale without prior written consent from LifeSpan BioSciences, Inc.

Created on 9/23/2014

© 2014 LifeSpan BioSciences