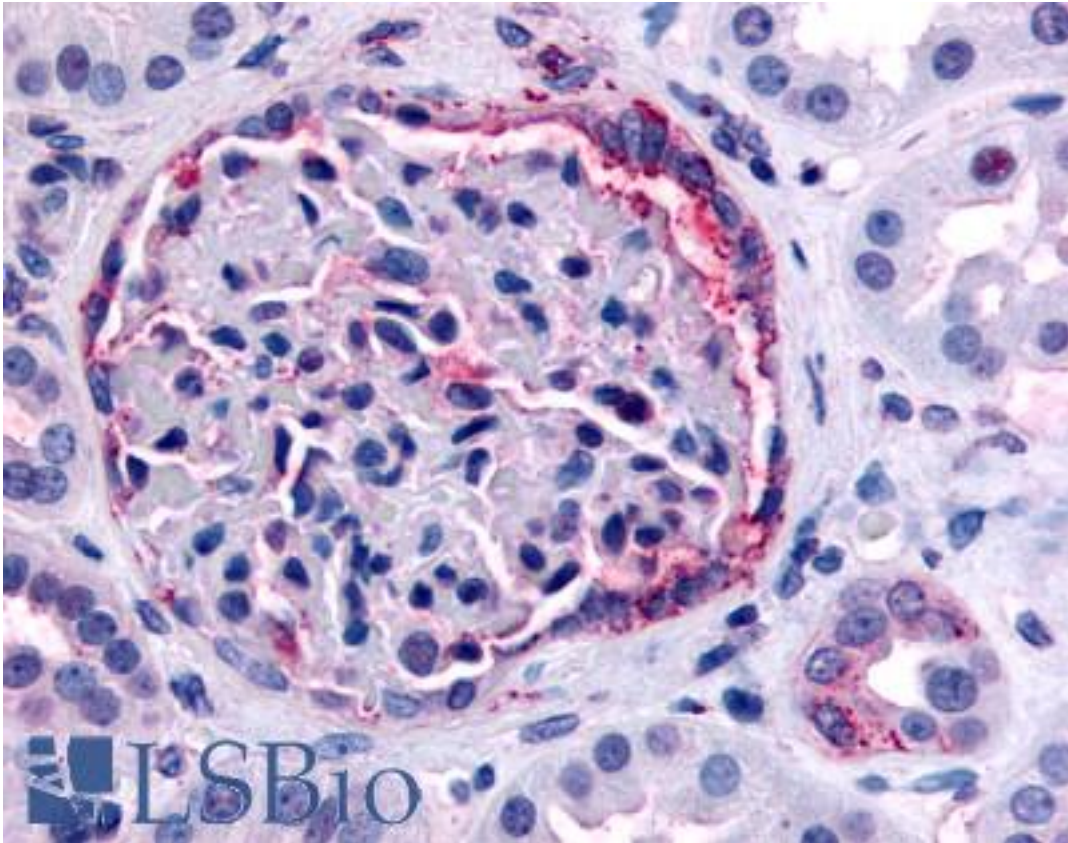


INPP5J / PIB5PA Rabbit anti-Human Polyclonal (C-Terminus) Antibody - LS-A3066 - LSBio	
CatalogID:	LS-A3066
Target:	inositol polyphosphate-5-phosphatase J (INPP5J)
Synonyms:	INPP5J Antibody, PIB5PA Antibody, INPP5 Antibody, PIPP Antibody
Family / Subfamily:	Inositol phosphatase / not assigned-Inositol phosphatase
Host	INPP5J antibody was produced in Rabbit
Clonality:	Polyclonal
Immunogen Species:	INPP5J / PIB5PA antibody was raised against Human
Antigen Type:	Synthetic peptide
Immunogen:	INPP5J / PIB5PA antibody was raised against synthetic 18 amino acid peptide from near C-terminus of human INPP5J / PIB5PA. Percent identity with other species by BLAST analysis: Human, Gorilla, Gibbon, Monkey, Marmoset, Mouse, Rat, Hamster, Elephant, Panda, Bovine, Dog, Bat, Horse, Rabbit, Pig (100%); Platypus (83%).
Specificity:	Human INPP5J / PIB5PA. BLAST analysis of the peptide immunogen showed no homology with other human proteins, except PPP1R3A (50%).
Epitope:	C-Terminus
Reactivity:	Human, Gorilla, Gibbon, Monkey, Mouse, Rat, Bat, Bovine, Dog, Hamster, Horse, Pig, Rabbit
Purification:	Immunoaffinity purified
Presentation:	PBS, 0.1% sodium azide.
Recommended Storage:	Long term: -70°C; Short term: +4°C
Uses:	IHC - Paraffin (6 µg/ml) (Optimal dilution to be determined by the researcher)
Size:	50 µg
Concentration:	1 mg/ml

Immunohistochemistry Image:



Anti-INPP5J / PIB5PA antibody LS-A3066 IHC of human kidney. Immunohistochemistry of formalin-fixed, paraffin-embedded tissue after heat-induced antigen retrieval.

Requested From:

Japan

Laboratory Reagent For In Vitro Research Use Only

Not for resale without prior written consent from LifeSpan BioSciences, Inc.

Created on 9/23/2014

© 2014 LifeSpan BioSciences