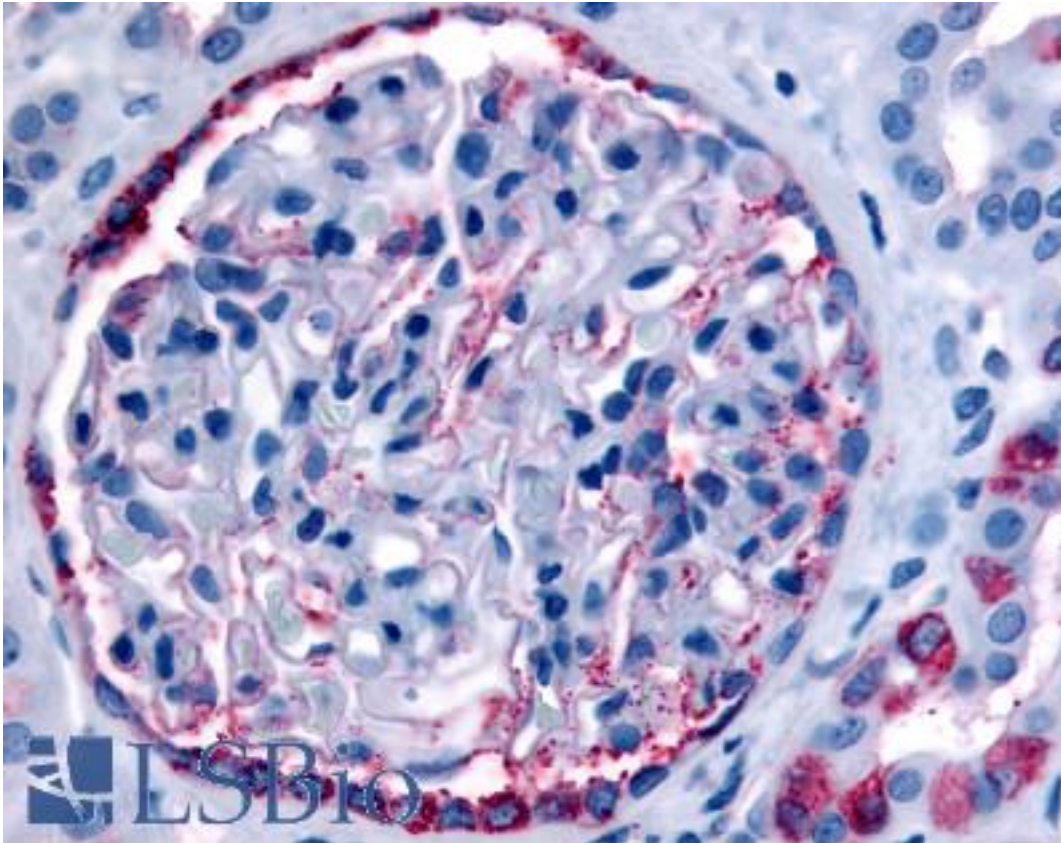


INPP5J / PIB5PA Rabbit anti-Human Polyclonal (Internal) Antibody - LS-A3064 - LSBio	
<b>CatalogID:</b>	LS-A3064
<b>Target:</b>	inositol polyphosphate-5-phosphatase J (INPP5J)
<b>Synonyms:</b>	INPP5J Antibody, PIB5PA Antibody, INPP5 Antibody, PIPP Antibody
<b>Family / Subfamily:</b>	Inositol phosphatase / not assigned-Inositol phosphatase
<b>Host</b>	INPP5J antibody was produced in Rabbit
<b>Clonality:</b>	Polyclonal
<b>Immunogen Species:</b>	INPP5J / PIB5PA antibody was raised against Human
<b>Antigen Type:</b>	Synthetic peptide
<b>Immunogen:</b>	INPP5J / PIB5PA antibody was raised against synthetic 19 amino acid peptide from internal region of human INPP5J / PIB5PA. Percent identity with other species by BLAST analysis: Human, Gorilla, Monkey, Elephant, Horse, Pig (100%); Gibbon, Marmoset, Mouse, Rat, Bovine, Dog, Hamster, Panda, Rabbit (95%); Bat, Platypus (89%).
<b>Specificity:</b>	Human INPP5J / PIB5PA. BLAST analysis of the peptide immunogen showed no homology with other human proteins.
<b>Epitope:</b>	Internal
<b>Reactivity:</b>	Human, Gorilla, Horse, Pig
<b>Predicted Reactivity:</b>	Gibbon, Monkey, Mouse, Rat, Bovine, Dog, Hamster, Rabbit
<b>Purification:</b>	Immunoaffinity purified
<b>Presentation:</b>	PBS, 0.1% sodium azide.
<b>Recommended Storage:</b>	Long term: -70°C; Short term: +4°C
<b>Usage Summary:</b>	Immunohistochemistry: LS-A3064 was validated for use in immunohistochemistry on a panel of 21 formalin-fixed, paraffin-embedded (FFPE) human tissues after heat induced antigen retrieval in pH 6.0 citrate buffer. After incubation with the primary antibody, slides were incubated with biotinylated secondary antibody, followed by alkaline phosphatase-streptavidin and chromogen. The stained slides were evaluated by a pathologist to confirm staining specificity. The optimal working concentration for LS-A3064 was determined to be 10-15 ug/ml.
<b>Uses:</b>	IHC - Paraffin (10 - 15 µg/ml) (Optimal dilution to be determined by the researcher)
<b>Size:</b>	50 µg
<b>Concentration:</b>	1 mg/ml

**Immunohistochemistry Image:**



Anti-INPP5J / PIB5PA antibody LS-A3064 IHC of human glomerulus and renal tubular epithelium in cortex. Immunohistochemistry of formalin-fixed, paraffin-embedded tissue after heat-induced antigen retrieval.

**Requested From:**

Japan

Laboratory Reagent For In Vitro Research Use Only

Not for resale without prior written consent from LifeSpan BioSciences, Inc.

Created on 9/23/2014

© 2014 LifeSpan BioSciences