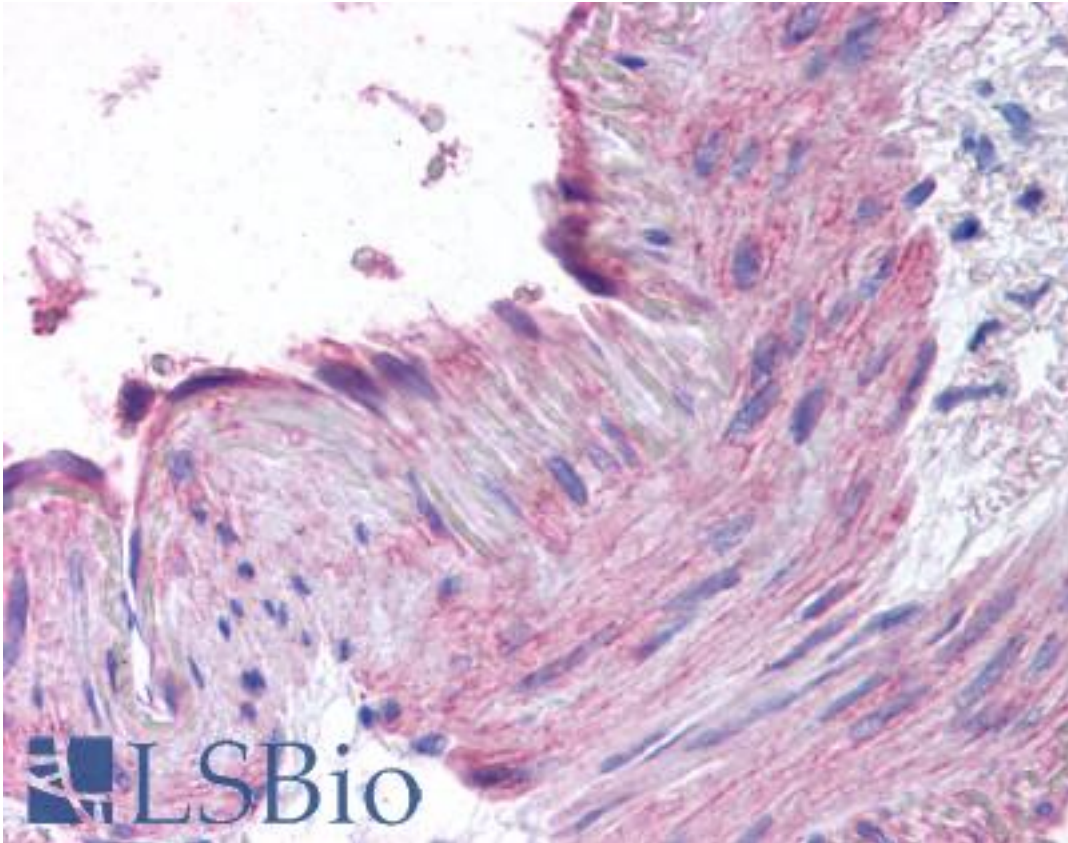


**CCR1 Rabbit anti-Human Polyclonal (N-Terminus) Antibody - LS-A305 - LSBio**

<b>CatalogID:</b>	LS-A305
<b>Target:</b>	chemokine (C-C motif) receptor 1 (CCR1)
<b>Synonyms:</b>	CCR1 Antibody, C-C chemokine receptor type 1 Antibody, CD191 Antibody, CD191 antigen Antibody, CKR-1 Antibody, CKR1 Antibody, CMKBR1 Antibody, CC-CKR-1 Antibody, CMKR1 Antibody, HM145 Antibody, MIP-1 alpha Antibody, RANTES-R Antibody, RANTES receptor Antibody, SCYAR1 Antibody, MIP-1 alpha receptor Antibody, C-C CKR-1 Antibody, CCR-1 Antibody, LD78 receptor Antibody, MIP-1alpha-R Antibody, MIP1aR Antibody
<b>Family / Subfamily:</b>	GPCR / Chemokine
<b>Host</b>	CCR1 antibody was produced in Rabbit
<b>Clonality:</b>	Polyclonal
<b>Immunogen Species:</b>	CCR1 antibody was raised against Human
<b>Antigen Type:</b>	Synthetic peptide
<b>Immunogen:</b>	CCR1 antibody was raised against synthetic 18 amino acid peptide from N-terminal extracellular domain of human CCR1. Percent identity with other species by BLAST analysis: Human, Gorilla, Gibbon (100%); Monkey, Hamster (89%); Marmoset, Mouse (83%).
<b>Specificity:</b>	Human CCR1. BLAST analysis of the peptide immunogen showed no homology with other human proteins.
<b>Epitope:</b>	N-Terminus
<b>Reactivity:</b>	Human, Gorilla, Gibbon
<b>Purification:</b>	Immunoaffinity purified
<b>Presentation:</b>	PBS, 0.1% sodium azide.
<b>Recommended Storage:</b>	Long term: -70°C; Short term: +4°C
<b>Uses:</b>	IHC - Paraffin (2.5 µg/ml) (Optimal dilution to be determined by the researcher)
<b>Size:</b>	50 µg
<b>Concentration:</b>	1 mg/ml

**Immunohistochemistry Image:**



Anti-CCR1 antibody LS-A305 IHC of human small intestine, vessel. Immunohistochemistry of formalin-fixed, paraffin-embedded tissue after heat-induced antigen retrieval.

**Requested From:**

Japan

Laboratory Reagent For In Vitro Research Use Only

Not for resale without prior written consent from LifeSpan BioSciences, Inc.

Created on 9/23/2014

© 2014 LifeSpan BioSciences