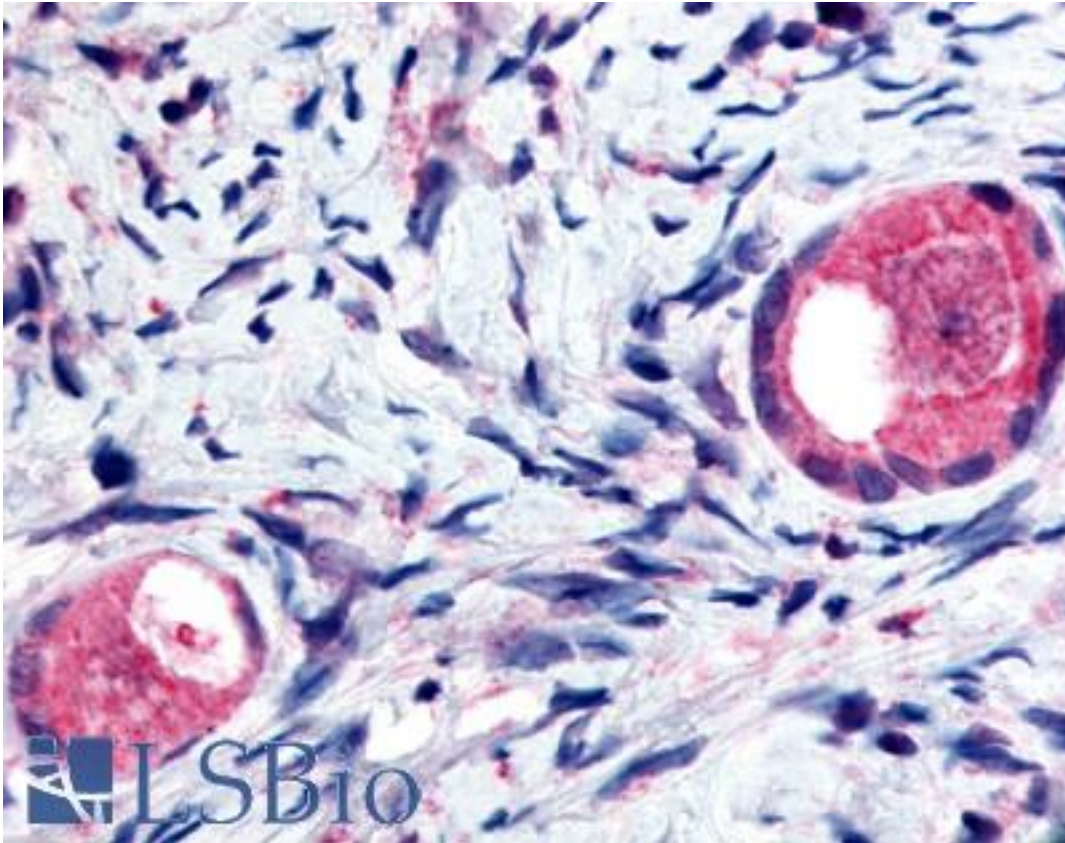


TMEM5 Rabbit anti-Human Polyclonal (Extracellular Domain) Antibody - LS-A3042 - LSBio	
<b>CatalogID:</b>	LS-A3042
<b>Target:</b>	transmembrane protein 5 (TMEM5)
<b>Synonyms:</b>	TMEM5 Antibody, HP10481 Antibody, Transmembrane protein 5 Antibody
<b>Host</b>	TMEM5 antibody was produced in Rabbit
<b>Clonality:</b>	Polyclonal
<b>Immunogen Species:</b>	TMEM5 antibody was raised against Human
<b>Antigen Type:</b>	Synthetic peptide
<b>Immunogen:</b>	TMEM5 antibody was raised against synthetic 18 amino acid peptide from extracellular domain of human TMEM5. Percent identity with other species by BLAST analysis: Human, Gorilla, Gibbon, Monkey (100%); Marmoset, Mouse, Rat, Dog, Panda, Horse (94%); Bovine, Elephant, Pig (89%).
<b>Specificity:</b>	Human TMEM5. BLAST analysis of the peptide immunogen showed no homology with other human proteins, except CACYBP (50%).
<b>Epitope:</b>	Extracellular Domain
<b>Reactivity:</b>	Human, Gorilla, Gibbon
<b>Predicted Reactivity:</b>	Monkey, Mouse, Rat, Dog, Horse
<b>Purification:</b>	Immunoaffinity purified
<b>Presentation:</b>	PBS, 0.1% sodium azide.
<b>Recommended Storage:</b>	Long term: -70°C; Short term: +4°C
<b>Usage Summary:</b>	Immunohistochemistry: LS-A3042 was validated for use in immunohistochemistry on a panel of 21 formalin-fixed, paraffin-embedded (FFPE) human tissues after heat induced antigen retrieval in pH 6.0 citrate buffer. After incubation with the primary antibody, slides were incubated with biotinylated secondary antibody, followed by alkaline phosphatase-streptavidin and chromogen. The stained slides were evaluated by a pathologist to confirm staining specificity. The optimal working concentration for LS-A3042 was determined to be 5 ug/ml.
<b>Uses:</b>	IHC - Paraffin (5 µg/ml) (Optimal dilution to be determined by the researcher)
<b>Size:</b>	50 µg
<b>Concentration:</b>	1 mg/ml

**Immunohistochemistry Image:**



Anti-TMEM5 antibody LS-A3042 IHC of human ovary, oocytes. Immunohistochemistry of formalin-fixed, paraffin-embedded tissue after heat-induced antigen retrieval.

**Requested From:**

Japan

Laboratory Reagent For In Vitro Research Use Only

Not for resale without prior written consent from LifeSpan BioSciences, Inc.

Created on 9/23/2014

© 2014 LifeSpan BioSciences