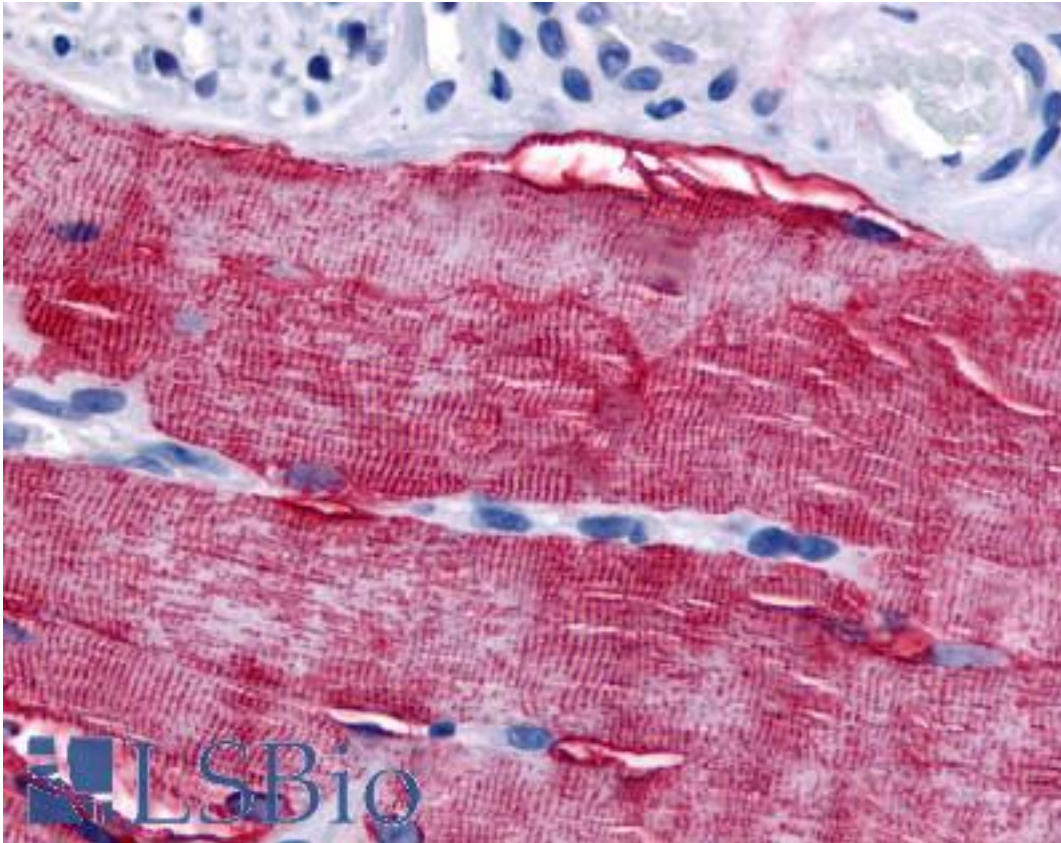


GRK5 Rabbit anti-Human Polyclonal (Internal) Antibody - LS-A3034 - LSBio

<b>CatalogID:</b>	LS-A3034
<b>Target:</b>	G protein-coupled receptor kinase 5 (GRK5)
<b>Synonyms:</b>	GRK5 Antibody, FP2025 Antibody, GPRK5 Antibody
<b>Family / Subfamily:</b>	Protein Kinase / GPRK
<b>Host</b>	GRK5 antibody was produced in Rabbit
<b>Clonality:</b>	Polyclonal
<b>Immunogen Species:</b>	GRK5 antibody was raised against Human
<b>Antigen Type:</b>	Synthetic peptide
<b>Immunogen:</b>	GRK5 antibody was raised against synthetic 15 amino acid peptide from internal region of human GRK5. Percent identity with other species by BLAST analysis: Human, Gorilla, Orangutan, Gibbon (100%); Marmoset, Mouse, Rat, Panda, Dog, Bat, Horse (93%); Elephant, Bovine, Pig (87%).
<b>Specificity:</b>	Human GRK5. BLAST analysis of the peptide immunogen showed no homology with other human proteins.
<b>Epitope:</b>	Internal
<b>Reactivity:</b>	Human, Gorilla, Orangutan, Gibbon
<b>Predicted Reactivity:</b>	Monkey, Mouse, Rat, Bat, Dog, Horse
<b>Purification:</b>	Immunoaffinity purified
<b>Presentation:</b>	PBS, 0.1% sodium azide.
<b>Recommended Storage:</b>	Long term: -70°C; Short term: +4°C
<b>Uses:</b>	IHC - Paraffin (3 µg/ml) (Optimal dilution to be determined by the researcher)
<b>Size:</b>	50 µg
<b>Concentration:</b>	1 mg/ml

**Immunohistochemistry Image:**



Anti-GRK5 antibody LS-A3034 IHC of human skeletal muscle. Immunohistochemistry of formalin-fixed, paraffin-embedded tissue after heat-induced antigen retrieval.

**Requested From:**

Japan

Laboratory Reagent For In Vitro Research Use Only

Not for resale without prior written consent from LifeSpan BioSciences, Inc.

Created on 9/23/2014

© 2014 LifeSpan BioSciences