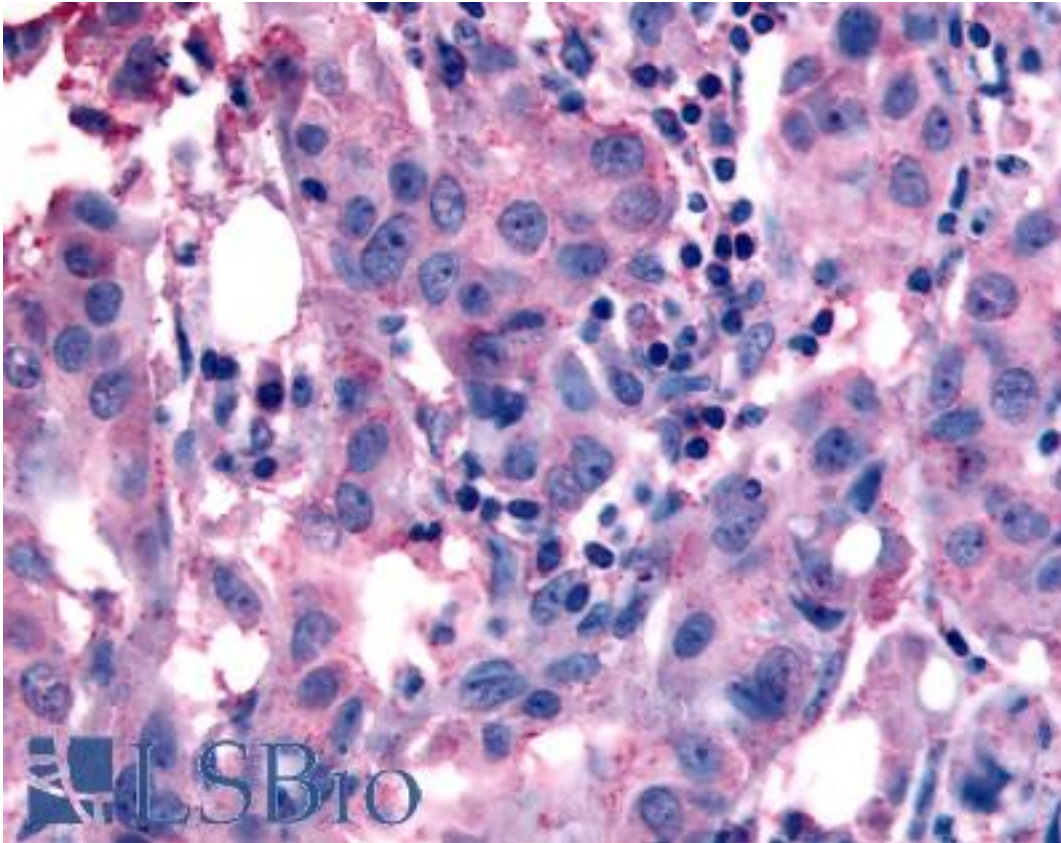


NANP Rabbit anti-Human Polyclonal (Internal) Antibody - LS-A2987 - LSBio	
<b>CatalogID:</b>	LS-A2987
<b>Target:</b>	N-acetylneuraminic acid phosphatase (NANP)
<b>Synonyms:</b>	NANP Antibody, C20orf147 Antibody, DJ694B14.3 Antibody, Neu5Ac-9-Pase Antibody, HDHD4 Antibody
<b>Family / Subfamily:</b>	Phosphatase
<b>Host</b>	NANP antibody was produced in Rabbit
<b>Clonality:</b>	Polyclonal
<b>Immunogen Species:</b>	NANP antibody was raised against Human
<b>Antigen Type:</b>	Synthetic peptide
<b>Immunogen:</b>	NANP antibody was raised against synthetic 16 amino acid peptide from internal region of human NANP. Percent identity with other species by BLAST analysis: Human, Gorilla, Gibbon, Monkey, Mouse, Rat, Dog, Hamster, Panda, Rabbit (100%); Marmoset, Bovine, Elephant, Pig, Opossum, Turkey, Chicken, Platypus (94%); Bat (88%); Lizard (81%).
<b>Specificity:</b>	Human NANP. BLAST analysis of the peptide immunogen showed no homology with other human proteins.
<b>Epitope:</b>	Internal
<b>Reactivity:</b>	Human, Gorilla, Gibbon, Mouse, Rat, Dog, Hamster, Rabbit
<b>Predicted Reactivity:</b>	Monkey, Bovine, Pig, Chicken
<b>Purification:</b>	Immunoaffinity purified
<b>Presentation:</b>	PBS, 0.1% sodium azide.
<b>Recommended Storage:</b>	Long term: -70°C; Short term: +4°C
<b>Usage Summary:</b>	Immunohistochemistry: LS-A2987 was validated for use in immunohistochemistry on a panel of 21 formalin-fixed, paraffin-embedded (FFPE) human tissues after heat induced antigen retrieval in pH 6.0 citrate buffer. After incubation with the primary antibody, slides were incubated with biotinylated secondary antibody, followed by alkaline phosphatase-streptavidin and chromogen. The stained slides were evaluated by a pathologist to confirm staining specificity. The optimal working concentration for LS-A2987 was determined to be 10-15 ug/ml.
<b>Uses:</b>	IHC - Paraffin (10 - 15 µg/ml) (Optimal dilution to be determined by the researcher)
<b>Size:</b>	50 µg
<b>Concentration:</b>	1 mg/ml

**Immunohistochemistry Image:**



Anti-NANP antibody LS-A2987 IHC of human neoplastic cells. Immunohistochemistry of formalin-fixed, paraffin-embedded tissue after heat-induced antigen retrieval.

**Requested From:**

Japan

Laboratory Reagent For In Vitro Research Use Only

Not for resale without prior written consent from LifeSpan BioSciences, Inc.

Created on 9/23/2014

© 2014 LifeSpan BioSciences