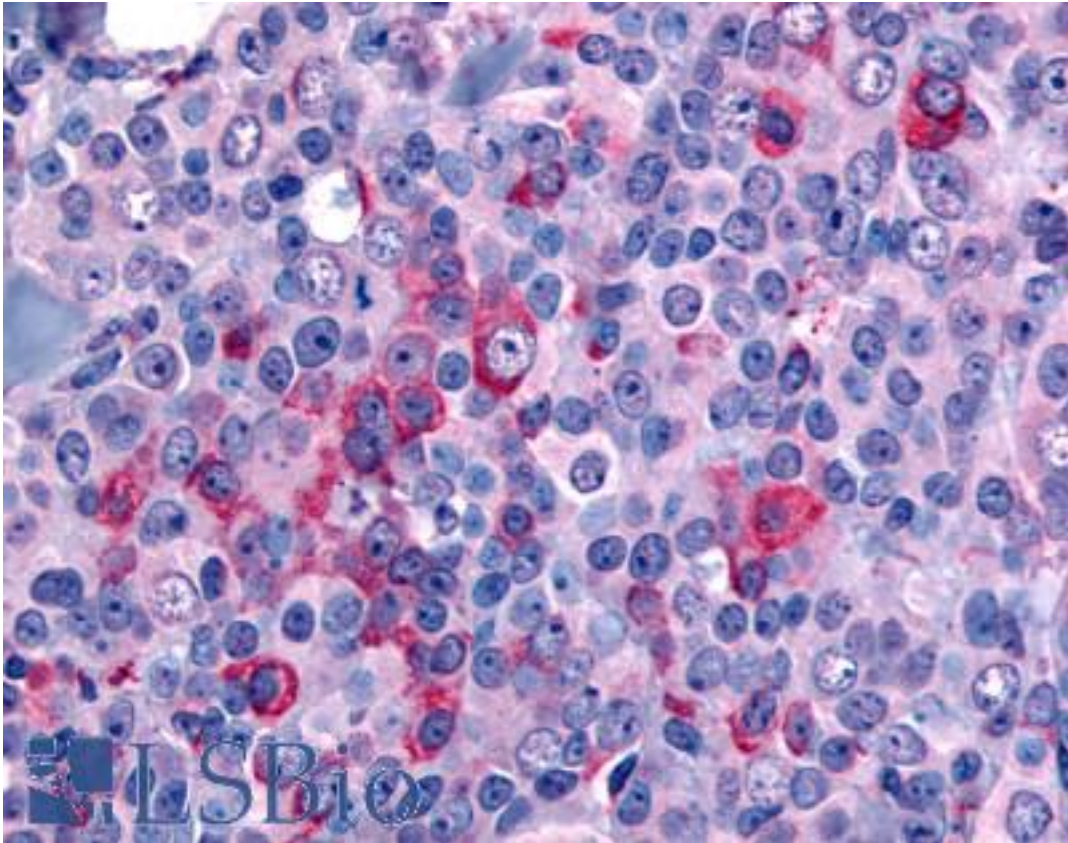


**NANP Rabbit anti-Human Polyclonal (N-Terminus) Antibody - LS-A2985 - LSBio**

<b>CatalogID:</b>	LS-A2985
<b>Target:</b>	N-acetylneuraminic acid phosphatase (NANP)
<b>Synonyms:</b>	NANP Antibody, C20orf147 Antibody, DJ694B14.3 Antibody, Neu5Ac-9-Pase Antibody, HDHD4 Antibody
<b>Family / Subfamily:</b>	Phosphatase
<b>Host</b>	NANP antibody was produced in Rabbit
<b>Clonality:</b>	Polyclonal
<b>Immunogen Species:</b>	NANP antibody was raised against Human
<b>Antigen Type:</b>	Synthetic peptide
<b>Immunogen:</b>	NANP antibody was raised against synthetic 16 amino acid peptide from near N-terminus of human NANP. Percent identity with other species by BLAST analysis: Human, Gorilla, Gibbon, Monkey, Marmoset, Mouse, Rat, Bovine, Bat (100%); Hamster, Pig (94%); Elephant, Panda, Dog, Rabbit (88%); Turkey, Chicken (81%).
<b>Specificity:</b>	Human NANP. BLAST analysis of the peptide immunogen showed no homology with other human proteins.
<b>Epitope:</b>	N-Terminus
<b>Reactivity:</b>	Human, Gorilla, Gibbon, Monkey, Mouse, Rat, Bat, Bovine
<b>Predicted Reactivity:</b>	Hamster, Pig
<b>Purification:</b>	Immunoaffinity purified
<b>Presentation:</b>	PBS, 0.1% sodium azide.
<b>Recommended Storage:</b>	Long term: -70°C; Short term: +4°C
<b>Uses:</b>	IHC - Paraffin (6 µg/ml) (Optimal dilution to be determined by the researcher)
<b>Size:</b>	50 µg
<b>Concentration:</b>	1 mg/ml

**Immunohistochemistry Image:**



Anti-NANP antibody LS-A2985 IHC of human breast, carcinoma. Immunohistochemistry of formalin-fixed, paraffin-embedded tissue after heat-induced antigen retrieval.

**Requested From:**

Japan

Laboratory Reagent For In Vitro Research Use Only

Not for resale without prior written consent from LifeSpan BioSciences, Inc.

Created on 9/23/2014

© 2014 LifeSpan BioSciences