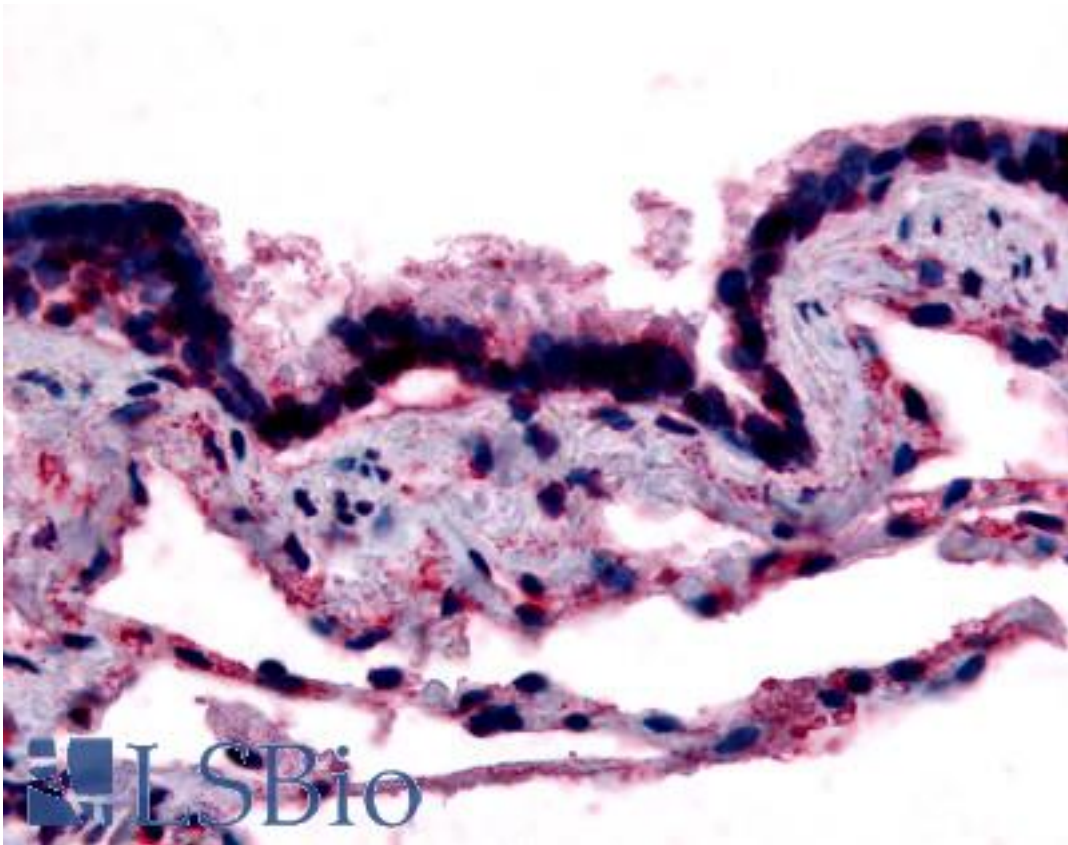


CAV1 / Caveolin 1 Rabbit anti-Human Polyclonal (N-Terminus) Antibody - LS-A2872 - LSBio	
<b>CatalogID:</b>	LS-A2872
<b>Target:</b>	caveolin 1, caveolae protein, 22kDa (CAV1)
<b>Synonyms:</b>	CAV1 Antibody, Caveolin-1 Antibody, CGL3 Antibody, CAV Antibody, MSTP085 Antibody, VIP21 Antibody, BSCL3 Antibody
<b>Host</b>	CAV1 antibody was produced in Rabbit
<b>Clonality:</b>	Polyclonal
<b>Immunogen Species:</b>	CAV1 / Caveolin 1 antibody was raised against Human
<b>Antigen Type:</b>	Synthetic peptide
<b>Immunogen:</b>	CAV1 / Caveolin 1 antibody was raised against synthetic 16 amino acid peptide from N-terminus of human CAV1 / Caveolin. Percent identity with other species by BLAST analysis: Human, Chimpanzee, Gorilla, Orangutan, Gibbon, Baboon, Monkey, Marmoset, Dog, Guinea pig (100%); Galago, Mouse, Rat, Ferret, Sheep, Bovine, Cat, Bat, Hamster, Elephant, Panda, Horse, Rabbit, Pig, Armadillo (94%); Opossum, Platypus (88%); Turkey, Chicken (81%).
<b>Specificity:</b>	Human CAV1 / Caveolin. BLAST analysis of the peptide immunogen showed no homology with other human proteins.
<b>Epitope:</b>	N-Terminus
<b>Reactivity:</b>	Human, Chimpanzee, Gorilla, Orangutan, Gibbon, Monkey, Dog, Guinea pig
<b>Predicted Reactivity:</b>	Mouse, Rat, Bat, Bovine, Hamster, Horse, Pig, Rabbit, Sheep
<b>Purification:</b>	Immunoaffinity purified
<b>Presentation:</b>	PBS, 0.1% sodium azide.
<b>Recommended Storage:</b>	Long term: -70°C; Short term: +4°C
<b>Usage Summary:</b>	Immunohistochemistry: LS-A2872 was validated for use in immunohistochemistry on a panel of 21 formalin-fixed, paraffin-embedded (FFPE) human tissues after heat induced antigen retrieval in pH 6.0 citrate buffer. After incubation with the primary antibody, slides were incubated with biotinylated secondary antibody, followed by alkaline phosphatase-streptavidin and chromogen. The stained slides were evaluated by a pathologist to confirm staining specificity. The optimal working concentration for LS-A2872 was determined to be 15-20 ug/ml.
<b>Uses:</b>	IHC - Paraffin (15 - 20 µg/ml) (Optimal dilution to be determined by the researcher)
<b>Size:</b>	50 µg
<b>Concentration:</b>	1 mg/ml

**Immunohistochemistry Image:**



Anti-CAV1 / Caveolin antibody LS-A2872 IHC of human respiratory epithelium, bronchial smooth muscle, and alveoli. Immunohistochemistry of formalin-fixed, paraffin-embedded tissue after heat-induced antigen retrieval.

**Requested From:**

Japan

Laboratory Reagent For In Vitro Research Use Only

Not for resale without prior written consent from LifeSpan BioSciences, Inc.

Created on 9/23/2014

© 2014 LifeSpan BioSciences