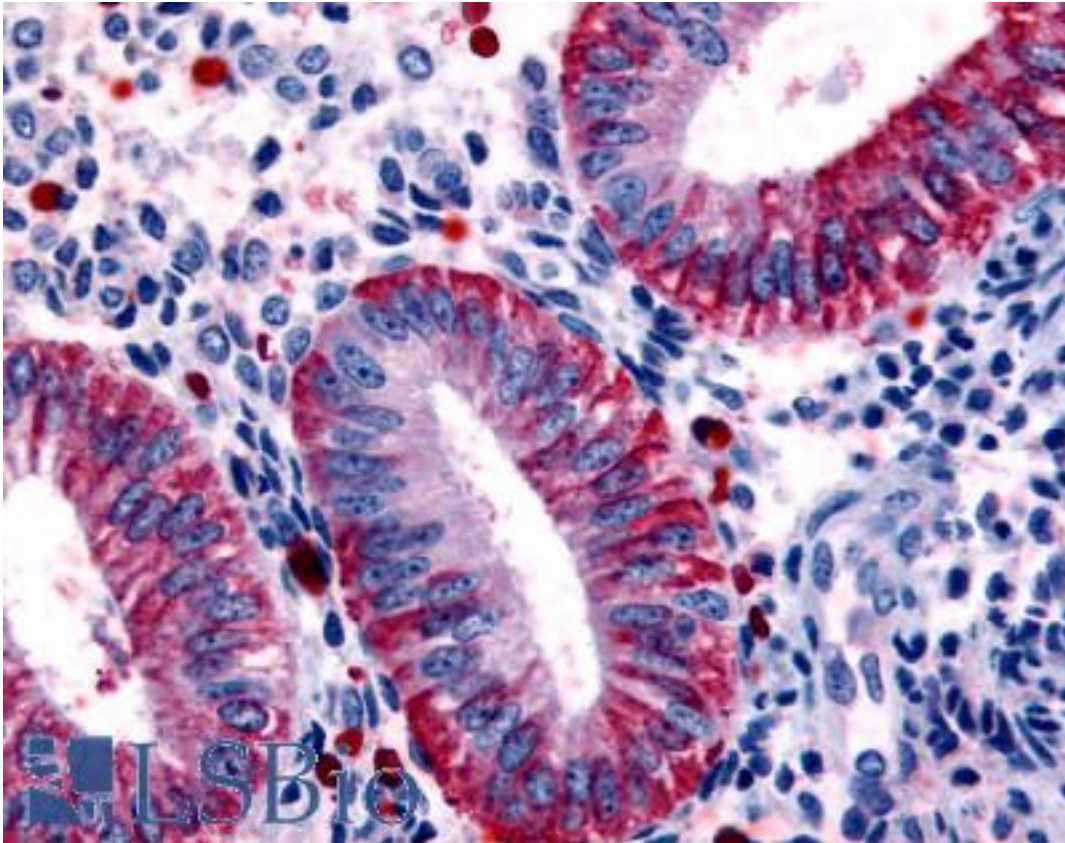


**DKK1 Rabbit anti-Human Polyclonal (Internal) Antibody - LS-A2868 - LSBio**

<b>CatalogID:</b>	LS-A2868
<b>Target:</b>	dickkopf WNT signaling pathway inhibitor 1 (DKK1)
<b>Synonyms:</b>	DKK1 Antibody, Dickkopf-1 like Antibody, DKK-1 Antibody, Dickkopf-1 Antibody, Dickkopf-related protein 1 Antibody, Dickkopf related protein-1 Antibody, HDkk-1 Antibody, Hdkk1 Antibody, Dickkopf-like protein 1 Antibody, SK Antibody
<b>Host</b>	DKK1 antibody was produced in Rabbit
<b>Clonality:</b>	Polyclonal
<b>Immunogen Species:</b>	DKK1 antibody was raised against Human
<b>Antigen Type:</b>	Synthetic peptide
<b>Immunogen:</b>	DKK1 antibody was raised against synthetic 16 amino acid peptide from internal region of human DKK1. Percent identity with other species by BLAST analysis: Human, Chimpanzee, Gorilla, Orangutan, Gibbon, Baboon, Monkey, Marmoset, Bat, Horse, Pig (100%); Galago, Sheep, Goat, Elephant, Bovine, Rabbit, Guinea pig (94%); Hamster, Panda, Dog (88%).
<b>Specificity:</b>	Human DKK1. BLAST analysis of the peptide immunogen showed no homology with other human proteins.
<b>Epitope:</b>	Internal
<b>Reactivity:</b>	Human, Chimpanzee, Gorilla, Orangutan, Gibbon, Monkey, Bat, Horse, Pig
<b>Predicted Reactivity:</b>	Bovine, Goat, Guinea pig, Rabbit, Sheep
<b>Purification:</b>	Immunoaffinity purified
<b>Presentation:</b>	PBS, 0.1% sodium azide.
<b>Recommended Storage:</b>	Long term: -70°C; Short term: +4°C
<b>Uses:</b>	IHC - Paraffin (10 µg/ml) (Optimal dilution to be determined by the researcher)
<b>Size:</b>	50 µg
<b>Concentration:</b>	1 mg/ml

**Immunohistochemistry Image:**



Anti-DKK1 antibody LS-A2868 IHC of human uterus, endometrium. Immunohistochemistry of formalin-fixed, paraffin-embedded tissue after heat-induced antigen retrieval.

**Requested From:**

Japan

Laboratory Reagent For In Vitro Research Use Only

Not for resale without prior written consent from LifeSpan BioSciences, Inc.

Created on 9/23/2014

© 2014 LifeSpan BioSciences