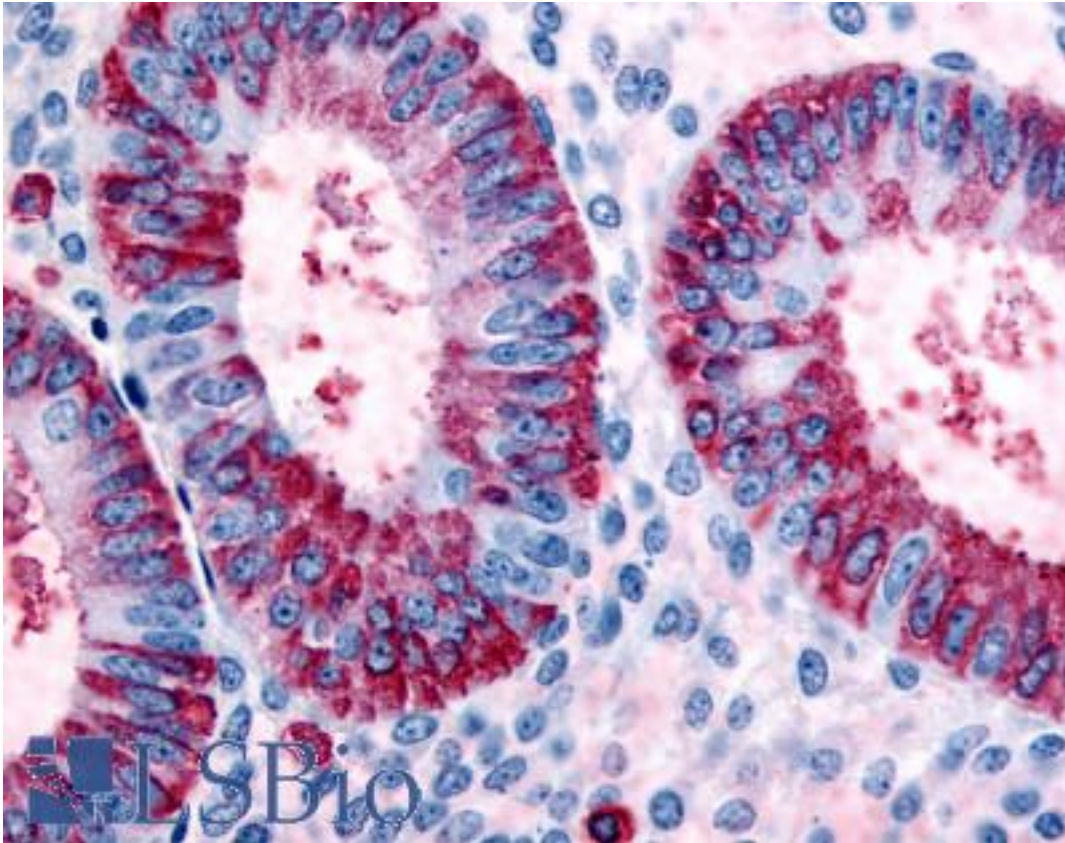


DKK1 Rabbit anti-Human Polyclonal (N-Terminus) Antibody - LS-A2866 - LSBio

CatalogID:	LS-A2866
Target:	dickkopf WNT signaling pathway inhibitor 1 (DKK1)
Synonyms:	DKK1 Antibody, Dickkopf-1 like Antibody, DKK-1 Antibody, Dickkopf-1 Antibody, Dickkopf-related protein 1 Antibody, Dickkopf related protein-1 Antibody, HDkk-1 Antibody, Hdkk1 Antibody, Dickkopf-like protein 1 Antibody, SK Antibody
Host	DKK1 antibody was produced in Rabbit
Clonality:	Polyclonal
Immunogen Species:	DKK1 antibody was raised against Human
Antigen Type:	Synthetic peptide
Immunogen:	DKK1 antibody was raised against synthetic 14 amino acid peptide from N-Terminus of human DKK1. Percent identity with other species by BLAST analysis: Human, Chimpanzee, Gorilla, Baboon, Monkey, Galago (100%); Orangutan, Gibbon, Marmoset, Elephant, Bovine, Horse, Rabbit, Pig (93%); Rat, Bat (86%).
Specificity:	Human DKK1. BLAST analysis of the peptide immunogen showed no homology with other human proteins.
Epitope:	N-Terminus
Reactivity:	Human, Chimpanzee, Gorilla
Predicted Reactivity:	Orangutan, Gibbon, Monkey, Bovine, Horse, Pig, Rabbit
Purification:	Immunoaffinity purified
Presentation:	PBS, 0.1% sodium azide.
Recommended Storage:	Long term: -70°C; Short term: +4°C
Uses:	IHC - Paraffin (10 µg/ml) (Optimal dilution to be determined by the researcher)
Size:	50 µg
Concentration:	1 mg/ml

Immunohistochemistry Image:



Anti-DKK1 antibody LS-A2866 IHC of human uterus, endometrium. Immunohistochemistry of formalin-fixed, paraffin-embedded tissue after heat-induced antigen retrieval.

Requested From:

Japan

Laboratory Reagent For In Vitro Research Use Only

Not for resale without prior written consent from LifeSpan BioSciences, Inc.

Created on 9/23/2014

© 2014 LifeSpan BioSciences