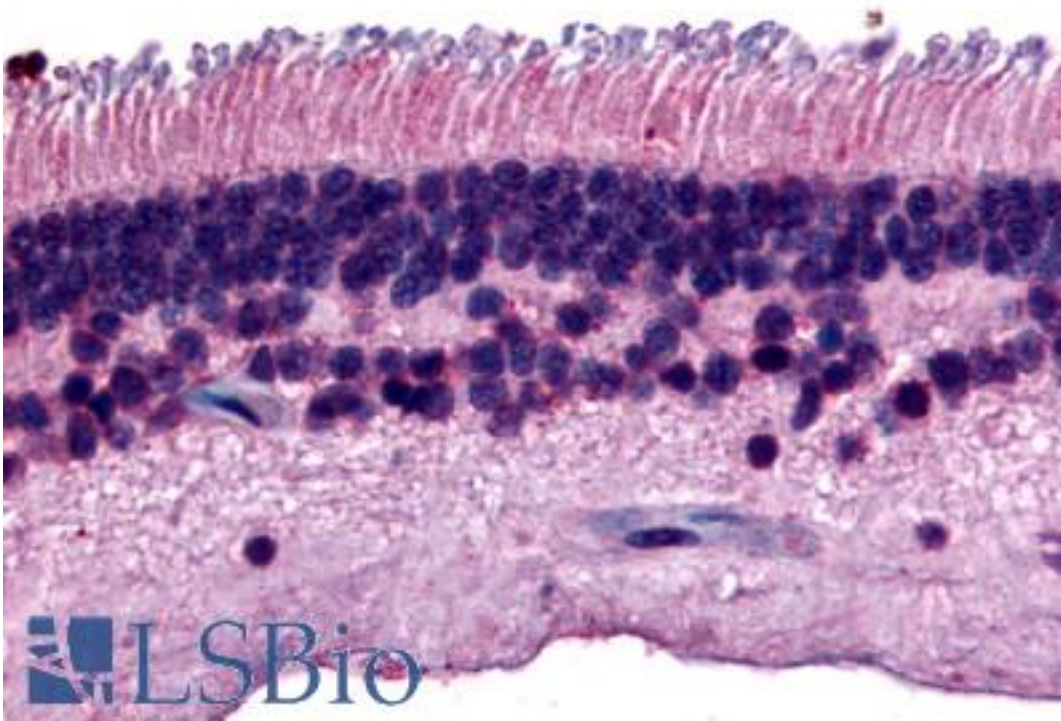


PTPRM / PTP Mu Rabbit anti-Human Polyclonal (Internal) Antibody - LS-A2864 - LSBio

CatalogID:	LS-A2864
Target:	protein tyrosine phosphatase, receptor type, M (PTPRM)
Synonyms:	PTPRM Antibody, HR-PTPu Antibody, PTP mu Antibody, PTPRL1 Antibody, RPTPM Antibody, Ptpmu Antibody, R-PTP-MU Antibody, RPTPU Antibody
Family / Subfamily:	Protein Phosphatase / R2A
Host	PTPRM antibody was produced in Rabbit
Clonality:	Polyclonal
Immunogen Species:	PTPRM / PTP Mu antibody was raised against Human
Antigen Type:	Synthetic peptide
Immunogen:	PTPRM / PTP Mu antibody was raised against synthetic 16 amino acid peptide from internal region of human PTPRM. Percent identity with other species by BLAST analysis: Human, Orangutan, Gibbon, Monkey, Marmoset, Mouse, Rat, Hamster, Bovine, Bat, Horse, Rabbit (100%); Opossum, Chicken (94%); Elephant, Panda, Dog (88%); Gorilla, Xenopus (81%).
Specificity:	Human PTPRM. BLAST analysis of the peptide immunogen showed no homology with other human proteins, except PTPRK (50%), PTPRT (50%).
Epitope:	Internal
Reactivity:	Human, Orangutan, Gibbon, Monkey, Mouse, Rat, Bat, Bovine, Hamster, Horse, Rabbit
Predicted Reactivity:	Chicken
Purification:	Immunoaffinity purified
Presentation:	PBS, 0.1% sodium azide.
Recommended Storage:	Long term: -70°C; Short term: +4°C
Uses:	IHC - Paraffin (12 µg/ml) (Optimal dilution to be determined by the researcher)
Size:	50 µg
Concentration:	1 mg/ml

Immunohistochemistry Image:



Anti-PTPRM antibody LS-A2864 IHC of human eye, retina. Immunohistochemistry of formalin-fixed, paraffin-embedded tissue after heat-induced antigen retrieval.

Requested From:

Japan

Laboratory Reagent For In Vitro Research Use Only

Not for resale without prior written consent from LifeSpan BioSciences, Inc.

Created on 9/23/2014

© 2014 LifeSpan BioSciences