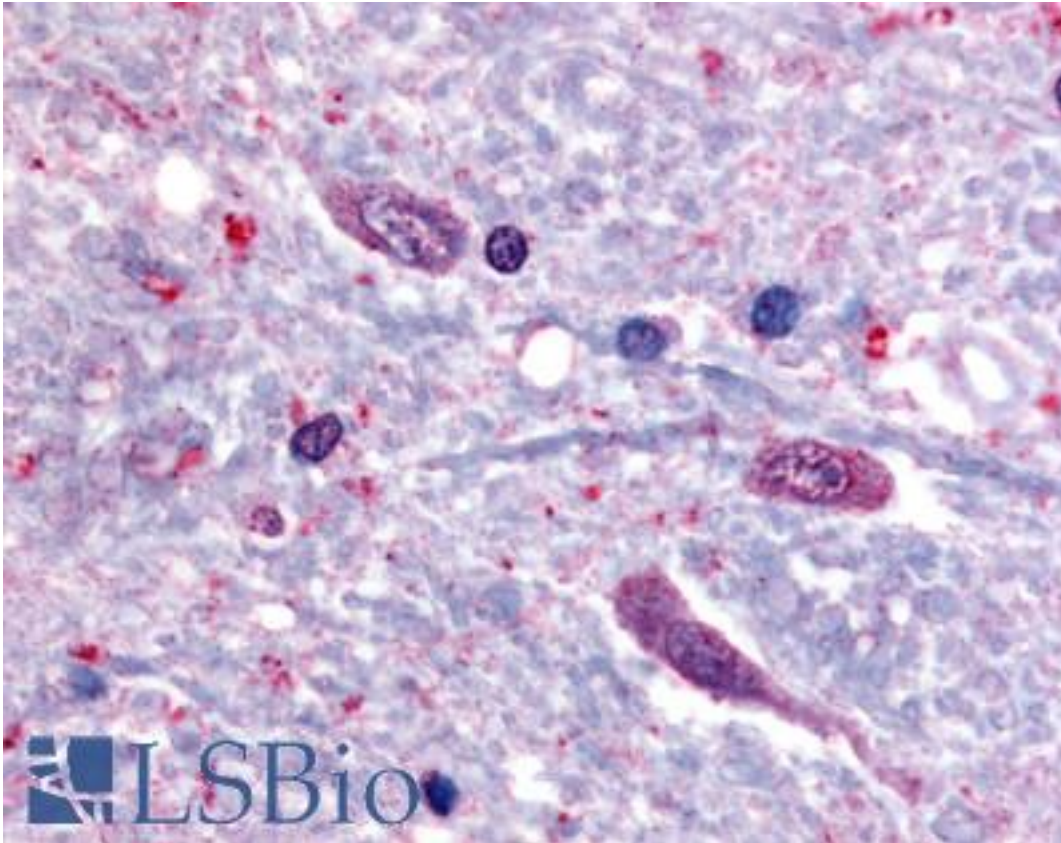


SLC5A3 / SMIT2 Rabbit anti-Human Polyclonal (C-Terminus) Antibody - LS-A2816 - LSBio	
CatalogID:	LS-A2816
Target:	solute carrier family 5 (sodium/myo-inositol cotransporter), member 3 (SLC5A3)
Synonyms:	SLC5A3 Antibody, Na ⁺ /myo-inositol cotransporter Antibody, SMIT1 Antibody, SMIT2 Antibody, SMIT Antibody, BCW2 protein Antibody
Family / Subfamily:	Transporter / Solute:sodium symporter
Host	SLC5A3 antibody was produced in Rabbit
Clonality:	Polyclonal
Immunogen Species:	SLC5A3 / SMIT2 antibody was raised against Human
Antigen Type:	Synthetic peptide
Immunogen:	SLC5A3 / SMIT2 antibody was raised against synthetic 16 amino acid peptide from C-terminus of human SLC5A3. Percent identity with other species by BLAST analysis: Human, Baboon, Monkey, Marmoset, Bat, Bovine, Dog, Hamster, Elephant, Panda, Rabbit, Armadillo (100%); Mouse, Rat (94%); Galago, Pig (88%).
Specificity:	Human SLC5A3. BLAST analysis of the peptide immunogen showed no homology with other human proteins.
Epitope:	C-Terminus
Reactivity:	Human, Monkey, Bat, Bovine, Dog, Hamster, Rabbit
Predicted Reactivity:	Mouse, Rat
Purification:	Immunoaffinity purified
Presentation:	PBS, 0.1% sodium azide.
Recommended Storage:	Long term: -70°C; Short term: +4°C
Usage Summary:	Immunohistochemistry: LS-A2816 was validated for use in immunohistochemistry on a panel of 21 formalin-fixed, paraffin-embedded (FFPE) human tissues after heat induced antigen retrieval in pH 6.0 citrate buffer. After incubation with the primary antibody, slides were incubated with biotinylated secondary antibody, followed by alkaline phosphatase-streptavidin and chromogen. The stained slides were evaluated by a pathologist to confirm staining specificity. The optimal working concentration for LS-A2816 was determined to be 40 ug/ml.
Uses:	IHC - Paraffin (40 µg/ml) (Optimal dilution to be determined by the researcher)
Size:	50 µg
Concentration:	1 mg/ml

Immunohistochemistry Image:



Anti-SLC5A3 antibody LS-A2816 IHC of human spinal cord. Immunohistochemistry of formalin-fixed, paraffin-embedded tissue after heat-induced antigen retrieval.

Requested From:

Japan

Laboratory Reagent For In Vitro Research Use Only

Not for resale without prior written consent from LifeSpan BioSciences, Inc.

Created on 9/23/2014

© 2014 LifeSpan BioSciences