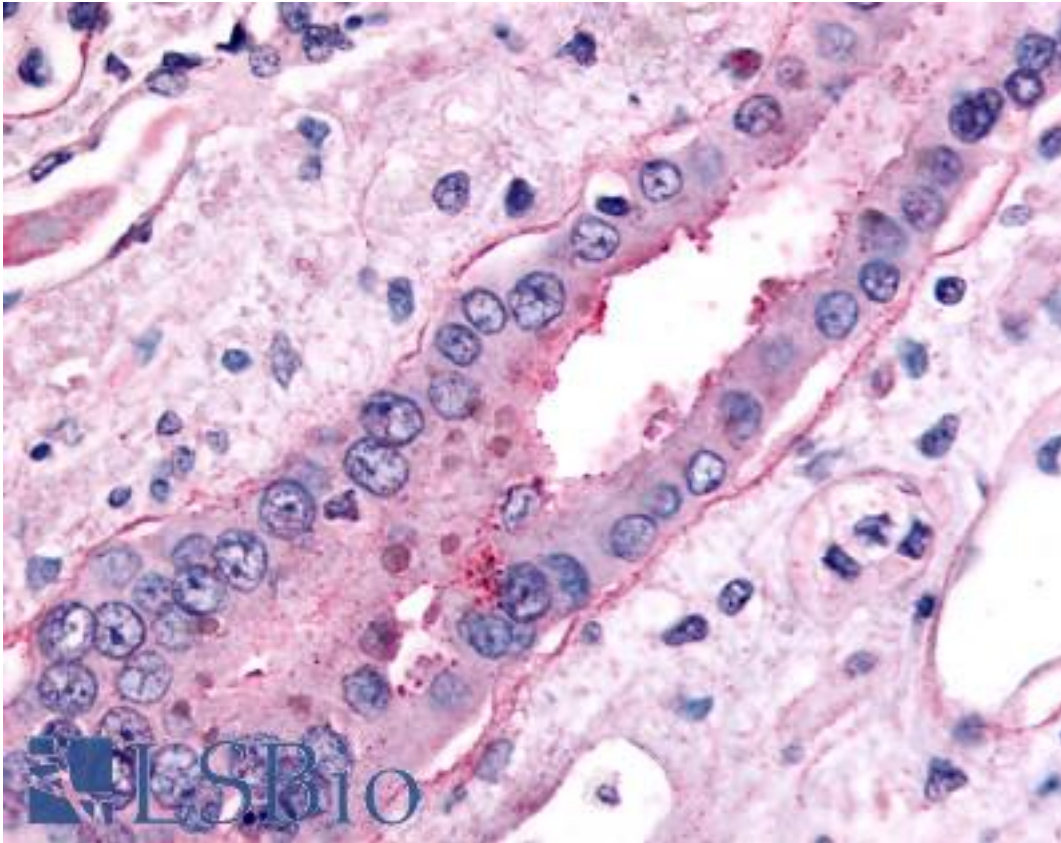


SLC5A2 / SGLT2 Rabbit anti-Human Polyclonal (C-Terminus) Antibody - LS-A2810 - LSBio	
CatalogID:	LS-A2810
Target:	solute carrier family 5 (sodium/glucose cotransporter), member 2 (SLC5A2)
Synonyms:	SLC5A2 Antibody, Na(+)/glucose cotransporter 2 Antibody, SGLT2 Antibody, Sodium-glucose transporter 2 Antibody, Sodium/glucose cotransporter 2 Antibody
Family / Subfamily:	Transporter / Solute:sodium symporter
Host	SLC5A2 antibody was produced in Rabbit
Clonality:	Polyclonal
Immunogen Species:	SLC5A2 / SGLT2 antibody was raised against Human
Antigen Type:	Synthetic peptide
Immunogen:	SLC5A2 / SGLT2 antibody was raised against synthetic 17 amino acid peptide from C-terminus of human SLC5A2. Percent identity with other species by BLAST analysis: Human, Gorilla, Gibbon, Monkey, Rat, Elephant, Horse (100%); Marmoset, Mouse, Hamster, Bat, Bovine (94%); Dog (88%); Panda, Rabbit (82%).
Specificity:	Human SLC5A2. BLAST analysis of the peptide immunogen showed no homology with other human proteins.
Epitope:	C-Terminus
Reactivity:	Human, Gorilla, Gibbon, Rat, Horse
Predicted Reactivity:	Monkey, Mouse, Bat, Bovine, Hamster
Purification:	Immunoaffinity purified
Presentation:	PBS, 0.1% sodium azide.
Recommended Storage:	Long term: -70°C; Short term: +4°C
Uses:	IHC - Paraffin (20 µg/ml) (Optimal dilution to be determined by the researcher)
Size:	50 µg
Concentration:	1 mg/ml

Immunohistochemistry Image:



Anti-SLC5A2 antibody LS-A2810 IHC of human kidney, collecting duct.
Immunohistochemistry of formalin-fixed, paraffin-embedded tissue after heat-induced antigen retrieval.

Requested From:

Japan

Laboratory Reagent For In Vitro Research Use Only

Not for resale without prior written consent from LifeSpan BioSciences, Inc.

Created on 9/23/2014

© 2014 LifeSpan BioSciences