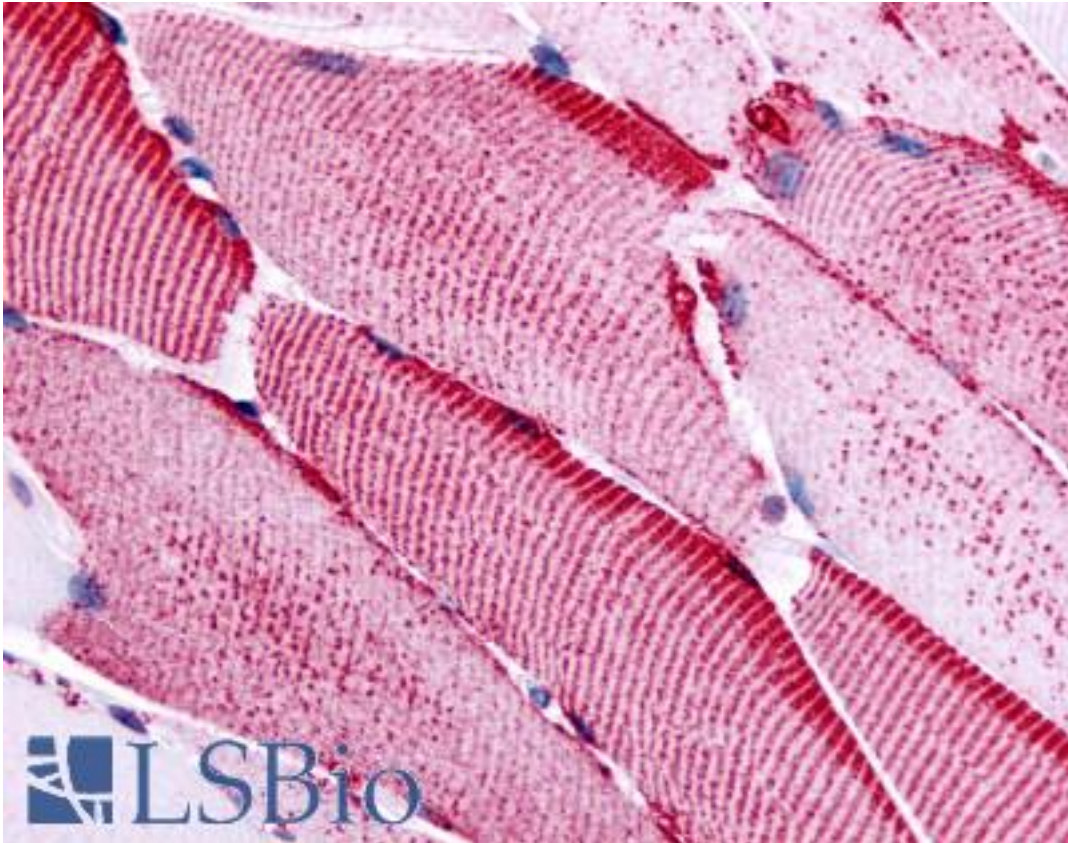


SLC5A10 / SGLT5 Rabbit anti-Human Polyclonal (Cytoplasmic Domain) Antibody - LS-A2800 - LSBio

CatalogID:	LS-A2800
Target:	solute carrier family 5 (sodium/sugar cotransporter), member 10 (SLC5A10)
Synonyms:	SLC5A10 Antibody, SGLT-5 Antibody, Sodium/glucose cotransporter 5 Antibody, Na(+)/glucose cotransporter 5 Antibody, SGLT5 Antibody, RK-D Antibody
Family / Subfamily:	Transporter / Solute:sodium symporter
Host	SLC5A10 antibody was produced in Rabbit
Clonality:	Polyclonal
Immunogen Species:	SLC5A10 / SGLT5 antibody was raised against Human
Antigen Type:	Synthetic peptide
Immunogen:	SLC5A10 / SGLT5 antibody was raised against synthetic 18 amino acid peptide from cytoplasmic domain of human SLC5A10. Percent identity with other species by BLAST analysis: Human, Gorilla, Gibbon, Monkey (100%); Marmoset, Rat, Hamster, Elephant, Pig (94%); Mouse, Dog, Bat, Bovine, Panda, Rabbit, Opossum (89%); Horse (83%).
Specificity:	Human SLC5A10. BLAST analysis of the peptide immunogen showed no homology with other human proteins, except SLC5A1 (67%).
Epitope:	Cytoplasmic Domain
Reactivity:	Human, Gorilla, Gibbon
Predicted Reactivity:	Monkey, Rat, Hamster, Pig
Purification:	Immunoaffinity purified
Presentation:	PBS, 0.1% sodium azide.
Recommended Storage:	Long term: -70°C; Short term: +4°C
Usage Summary:	Immunohistochemistry: LS-A2800 was validated for use in immunohistochemistry on a panel of 21 formalin-fixed, paraffin-embedded (FFPE) human tissues after heat induced antigen retrieval in pH 6.0 citrate buffer. After incubation with the primary antibody, slides were incubated with biotinylated secondary antibody, followed by alkaline phosphatase-streptavidin and chromogen. The stained slides were evaluated by a pathologist to confirm staining specificity. The optimal working concentration for LS-A2800 was determined to be 20 ug/ml.
Uses:	IHC - Paraffin (20 µg/ml) (Optimal dilution to be determined by the researcher)
Size:	50 µg
Concentration:	0.85 mg/ml

Immunohistochemistry Image:



Anti-SLC5A10 antibody LS-A2800 IHC of human skeletal muscle. Immunohistochemistry of formalin-fixed, paraffin-embedded tissue after heat-induced antigen retrieval.

Requested From:

Japan

Laboratory Reagent For In Vitro Research Use Only

Not for resale without prior written consent from LifeSpan BioSciences, Inc.

Created on 9/23/2014

© 2014 LifeSpan BioSciences