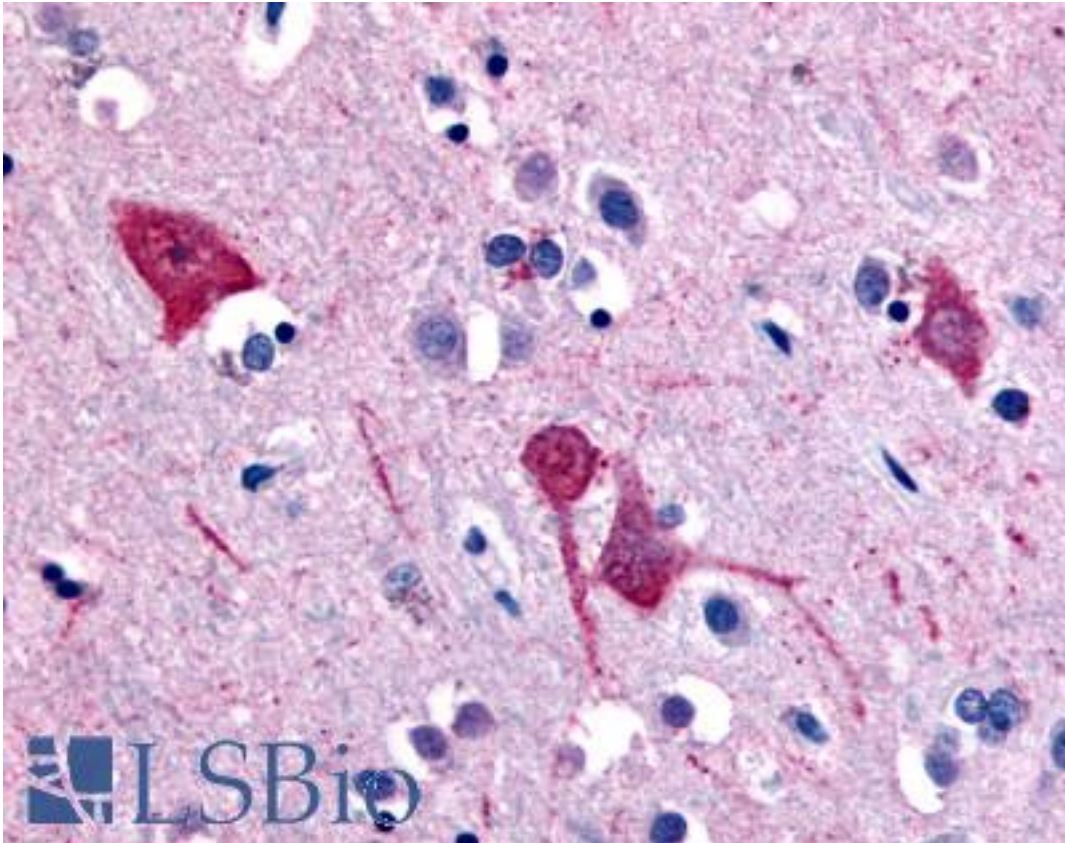


SLC5A11 / SMIT2 Rabbit anti-Human Polyclonal (Extracellular Domain) Antibody - LS-A2797 - LSBio

<b>CatalogID:</b>	LS-A2797
<b>Target:</b>	solute carrier family 5 (sodium/inositol cotransporter), member 11 (SLC5A11)
<b>Synonyms:</b>	SLC5A11 Antibody, Homolog of rabbit KST1 Antibody, KST1 Antibody, SLGTX Antibody, SMIT2 Antibody, RKST1 Antibody, SGLT6 Antibody
<b>Family / Subfamily:</b>	Transporter / Solute:sodium symporter
<b>Host</b>	SLC5A11 antibody was produced in Rabbit
<b>Clonality:</b>	Polyclonal
<b>Immunogen Species:</b>	SLC5A11 / SMIT2 antibody was raised against Human
<b>Antigen Type:</b>	Synthetic peptide
<b>Immunogen:</b>	SLC5A11 / SMIT2 antibody was raised against synthetic 17 amino acid peptide from extracellular domain of human SLC5A11. Percent identity with other species by BLAST analysis: Human, Gorilla, Gibbon, Monkey, Marmoset (100%); Rabbit, Horse, Pig (94%); Rat, Elephant (88%); Mouse, Dog, Bovine, Hamster, Opossum, Turkey, Chicken (82%).
<b>Specificity:</b>	Human SLC5A11. BLAST analysis of the peptide immunogen showed no homology with other human proteins, except SLC5A2 (65%), SLC5A9 (65%).
<b>Epitope:</b>	Extracellular Domain
<b>Reactivity:</b>	Human, Gorilla, Gibbon, Monkey
<b>Predicted Reactivity:</b>	Horse, Pig, Rabbit
<b>Purification:</b>	Immunoaffinity purified
<b>Presentation:</b>	PBS, 0.1% sodium azide.
<b>Recommended Storage:</b>	Long term: -70°C; Short term: +4°C
<b>Usage Summary:</b>	Immunohistochemistry: LS-A2797 was validated for use in immunohistochemistry on a panel of 21 formalin-fixed, paraffin-embedded (FFPE) human tissues after heat induced antigen retrieval in pH 6.0 citrate buffer. After incubation with the primary antibody, slides were incubated with biotinylated secondary antibody, followed by alkaline phosphatase-streptavidin and chromogen. The stained slides were evaluated by a pathologist to confirm staining specificity. The optimal working concentration for LS-A2797 was determined to be 10 ug/ml.
<b>Uses:</b>	IHC - Paraffin (10 µg/ml) (Optimal dilution to be determined by the researcher)
<b>Size:</b>	50 µg
<b>Concentration:</b>	1 mg/ml

**Immunohistochemistry Image:**



Anti-SLC5A11 antibody LS-A2797 IHC of human brain, cortex. Immunohistochemistry of formalin-fixed, paraffin-embedded tissue after heat-induced antigen retrieval.

**Requested From:**

Japan

Laboratory Reagent For In Vitro Research Use Only

Not for resale without prior written consent from LifeSpan BioSciences, Inc.

Created on 9/23/2014

© 2014 LifeSpan BioSciences