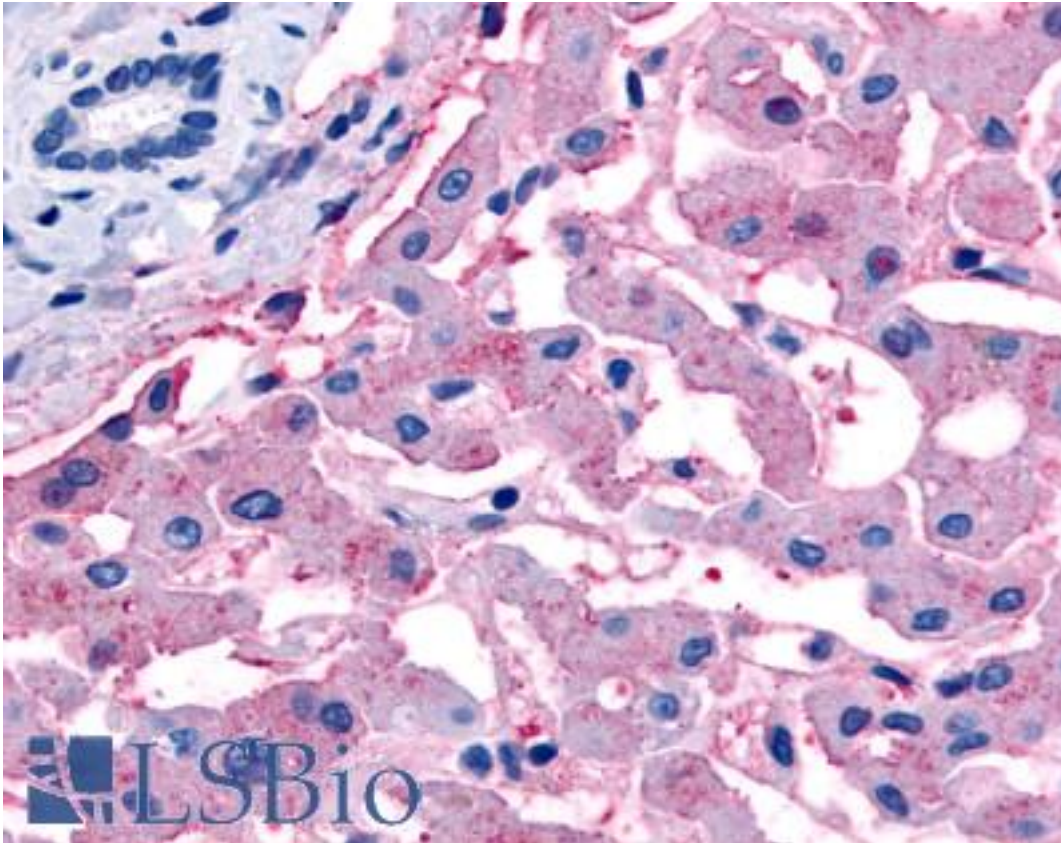


SLC5A4 / SGLT2 Rabbit anti-Human Polyclonal (C-Terminus) Antibody - LS-A2765 - LSBio	
CatalogID:	LS-A2765
Target:	solute carrier family 5 (glucose activated ion channel), member 4 (SLC5A4)
Synonyms:	SLC5A4 Antibody, DJ90G24.4 Antibody, Na(+)/glucose cotransporter 3 Antibody, SAAT11 Antibody, SGLT2 Antibody, Sodium transporter Antibody, Sodium/glucose cotransporter 3 Antibody, SAAT1 Antibody, SGLT3 Antibody
Family / Subfamily:	Transporter / Solute:sodium symporter
Host	SLC5A4 antibody was produced in Rabbit
Clonality:	Polyclonal
Immunogen Species:	SLC5A4 / SGLT2 antibody was raised against Human
Antigen Type:	Synthetic peptide
Immunogen:	SLC5A4 / SGLT2 antibody was raised against synthetic 16 amino acid peptide from C-terminus of human SLC5A4. Percent identity with other species by BLAST analysis: Human, Gorilla (100%); Gibbon, Baboon, Monkey (94%); Marmoset (81%).
Specificity:	Human SLC5A4. BLAST analysis of the peptide immunogen showed no homology with other human proteins.
Epitope:	C-Terminus
Reactivity:	Human, Gorilla
Predicted Reactivity:	Gibbon, Monkey
Purification:	Immunoaffinity purified
Presentation:	PBS, 0.1% sodium azide.
Recommended Storage:	Long term: -70°C; Short term: +4°C
Usage Summary:	Immunohistochemistry: LS-A2765 was validated for use in immunohistochemistry on a panel of 21 formalin-fixed, paraffin-embedded (FFPE) human tissues after heat induced antigen retrieval in pH 6.0 citrate buffer. After incubation with the primary antibody, slides were incubated with biotinylated secondary antibody, followed by alkaline phosphatase-streptavidin and chromogen. The stained slides were evaluated by a pathologist to confirm staining specificity. The optimal working concentration for LS-A2765 was determined to be 20 ug/ml.
Uses:	IHC - Paraffin (20 µg/ml) (Optimal dilution to be determined by the researcher)
Size:	50 µg
Concentration:	1 mg/ml

Immunohistochemistry Image:



Anti-SLC5A4 antibody LS-A2765 IHC of human liver. Immunohistochemistry of formalin-fixed, paraffin-embedded tissue after heat-induced antigen retrieval.

Requested From:

Japan

Laboratory Reagent For In Vitro Research Use Only

Not for resale without prior written consent from LifeSpan BioSciences, Inc.

Created on 9/23/2014

© 2014 LifeSpan BioSciences