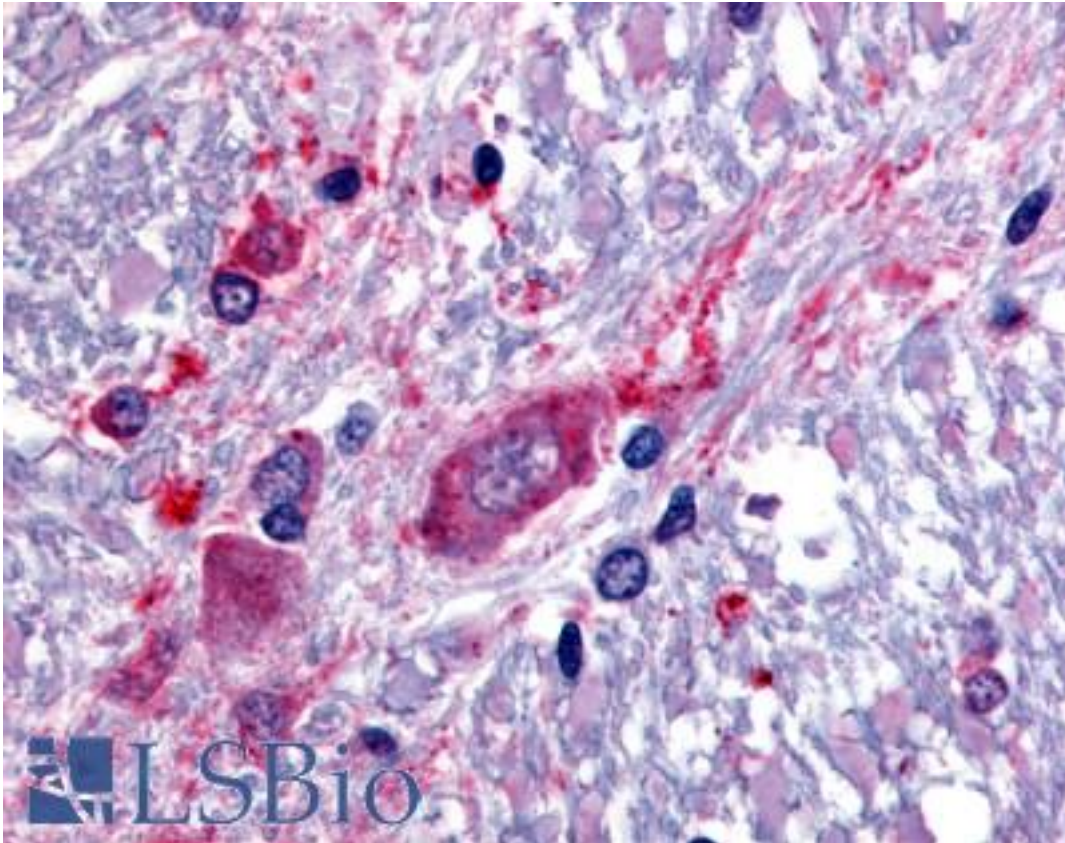


SLC5A3 / SMIT2 Rabbit anti-Human Polyclonal (C-Terminus) Antibody - LS-A2760 - LSBio	
<b>CatalogID:</b>	LS-A2760
<b>Target:</b>	solute carrier family 5 (sodium/myo-inositol cotransporter), member 3 (SLC5A3)
<b>Synonyms:</b>	SLC5A3 Antibody, Na <sup>+</sup> /myo-inositol cotransporter Antibody, SMIT1 Antibody, SMIT2 Antibody, SMIT Antibody, BCW2 protein Antibody
<b>Family / Subfamily:</b>	Transporter / Solute:sodium symporter
<b>Host</b>	SLC5A3 antibody was produced in Rabbit
<b>Clonality:</b>	Polyclonal
<b>Immunogen Species:</b>	SLC5A3 / SMIT2 antibody was raised against Human
<b>Antigen Type:</b>	Synthetic peptide
<b>Immunogen:</b>	SLC5A3 / SMIT2 antibody was raised against synthetic 18 amino acid peptide from C-terminus of human SLC5A3. Percent identity with other species by BLAST analysis: Human, Baboon, Monkey, Galago, Bat, Bovine, Dog, Elephant, Panda, Rabbit, Pig (100%); Marmoset, Mouse, Hamster, Armadillo (94%); Shrew (89%); Rat (83%).
<b>Specificity:</b>	Human SLC5A3. BLAST analysis of the peptide immunogen showed no homology with other human proteins.
<b>Epitope:</b>	C-Terminus
<b>Reactivity:</b>	Human, Bat, Bovine, Dog, Pig, Rabbit
<b>Predicted Reactivity:</b>	Monkey, Mouse, Hamster
<b>Purification:</b>	Immunoaffinity purified
<b>Presentation:</b>	PBS, 0.1% sodium azide.
<b>Recommended Storage:</b>	Long term: -70°C; Short term: +4°C
<b>Usage Summary:</b>	Immunohistochemistry: LS-A2760 was validated for use in immunohistochemistry on a panel of 21 formalin-fixed, paraffin-embedded (FFPE) human tissues after heat induced antigen retrieval in pH 6.0 citrate buffer. After incubation with the primary antibody, slides were incubated with biotinylated secondary antibody, followed by alkaline phosphatase-streptavidin and chromogen. The stained slides were evaluated by a pathologist to confirm staining specificity. The optimal working concentration for LS-A2760 was determined to be 20 ug/ml.
<b>Uses:</b>	IHC - Paraffin (20 µg/ml) (Optimal dilution to be determined by the researcher)
<b>Size:</b>	50 µg
<b>Concentration:</b>	1 mg/ml

**Immunohistochemistry Image:**



Anti-SLC5A3 antibody LS-A2760 IHC of human spinal cord. Immunohistochemistry of formalin-fixed, paraffin-embedded tissue after heat-induced antigen retrieval.

**Requested From:**

Japan

Laboratory Reagent For In Vitro Research Use Only

Not for resale without prior written consent from LifeSpan BioSciences, Inc.

Created on 9/23/2014

© 2014 LifeSpan BioSciences