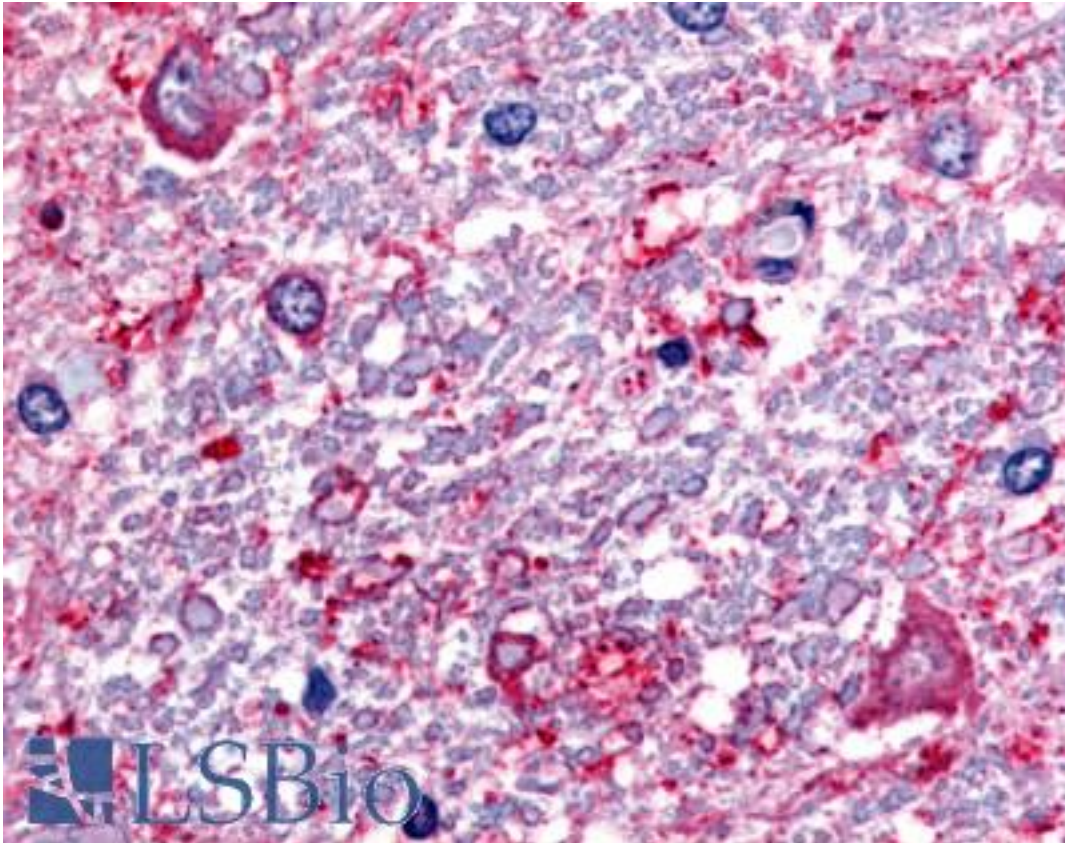


SLC5A3 / SMIT2 Rabbit anti-Human Polyclonal (Internal) Antibody - LS-A2757 - LSBio

CatalogID:	LS-A2757
Target:	solute carrier family 5 (sodium/myo-inositol cotransporter), member 3 (SLC5A3)
Synonyms:	SLC5A3 Antibody, Na ⁺ /myo-inositol cotransporter Antibody, SMIT1 Antibody, SMIT2 Antibody, SMIT Antibody, BCW2 protein Antibody
Family / Subfamily:	Transporter / Solute:sodium symporter
Host	SLC5A3 antibody was produced in Rabbit
Clonality:	Polyclonal
Immunogen Species:	SLC5A3 / SMIT2 antibody was raised against Human
Antigen Type:	Synthetic peptide
Immunogen:	SLC5A3 / SMIT2 antibody was raised against synthetic 17 amino acid peptide from internal region of human SLC5A3. Percent identity with other species by BLAST analysis: Baboon, Monkey, Marmoset (100%); Human, Galago, Elephant, Panda, Bat, Bovine, Dog, Rabbit, Pig (94%); Rat (88%); Mouse, Hamster, Guinea pig, Armadillo (81%).
Specificity:	Human SLC5A3. BLAST analysis of the peptide immunogen showed no homology with other human proteins.
Epitope:	Internal
Reactivity:	Human, Monkey
Predicted Reactivity:	Bat, Bovine, Dog, Pig, Rabbit
Purification:	Immunoaffinity purified
Presentation:	PBS, 0.1% sodium azide.
Recommended Storage:	Long term: -70°C; Short term: +4°C
Uses:	IHC - Paraffin (20 µg/ml) (Optimal dilution to be determined by the researcher)
Size:	50 µg
Concentration:	1 mg/ml

Immunohistochemistry Image:



Anti-SLC5A3 antibody LS-A2757 IHC of human spinal cord. Immunohistochemistry of formalin-fixed, paraffin-embedded tissue after heat-induced antigen retrieval.

Requested From:

Japan

Laboratory Reagent For In Vitro Research Use Only

Not for resale without prior written consent from LifeSpan BioSciences, Inc.

Created on 9/23/2014

© 2014 LifeSpan BioSciences