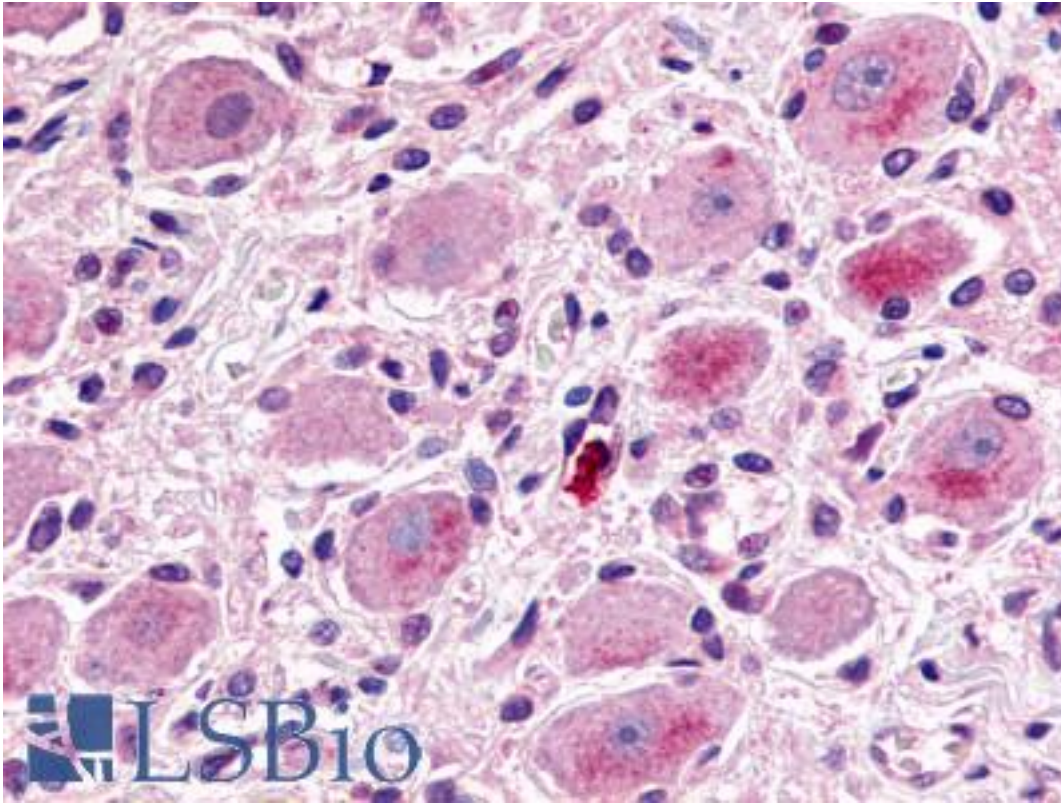


| MRGX1 / MRGPRX1 Rabbit anti-Human Polyclonal (N-Terminus) Antibody - LS-A2756 - LSBio |   |
|---|---|
| <b>CatalogID:</b>   | LS-A2756  |
| <b>Target:</b>  | MAS-related GPR, member X1 (MRGPRX1)  |
| <b>Synonyms:</b>  | MRGPRX1 Antibody, MRGX1 Antibody, SNSR4 Antibody, SNSR3 Antibody, MAS-related GPR, member X1 Antibody   |
| <b>Family / Subfamily:</b>  | GPCR / Opioid   |
| <b>Host</b>   | MRGPRX1 antibody was produced in Rabbit   |
| <b>Clonality:</b>   | Polyclonal  |
| <b>Immunogen Species:</b>   | MRGX1 / MRGPRX1 antibody was raised against Human   |
| <b>Antigen Type:</b>  | Synthetic peptide   |
| <b>Immunogen:</b>   | MRGX1 / MRGPRX1 antibody was raised against synthetic 14 amino acid peptide from N-terminal extracellular domain of human MRGPRX1 / MRGX1. Percent identity with other species by BLAST analysis: Human, Monkey (100%); Gibbon (93%). |
| <b>Specificity:</b>   | Human MRGPRX1 / MRGX1. BLAST analysis of the peptide immunogen showed no homology with other human proteins, except MRGPRX3 (71%).  |
| <b>Epitope:</b>   | N-Terminus  |
| <b>Reactivity:</b>  | Human, Monkey   |
| <b>Predicted Reactivity:</b>  | Gibbon  |
| <b>Purification:</b>  | Immunoaffinity purified   |
| <b>Presentation:</b>  | PBS, 0.1% sodium azide.   |
| <b>Recommended Storage:</b>   | Long term: -70°C; Short term: +4°C  |
| <b>Uses:</b>  | IHC - Paraffin (12 µg/ml), ICC (Optimal dilution to be determined by the researcher)  |
| <b>Size:</b>  | 50 µg   |
| <b>Concentration:</b>   | 1 mg/ml   |

**Immunohistochemistry Image:**



Anti-MRGPRX1 / MRGX1 antibody LS-A2756 IHC of human ganglion cells and Schwann cells. Immunohistochemistry of formalin-fixed, paraffin-embedded tissue after heat-induced antigen retrieval.

**Requested From:**

Japan

Laboratory Reagent For In Vitro Research Use Only

Not for resale without prior written consent from LifeSpan BioSciences, Inc.

Created on 9/23/2014

© 2014 LifeSpan BioSciences