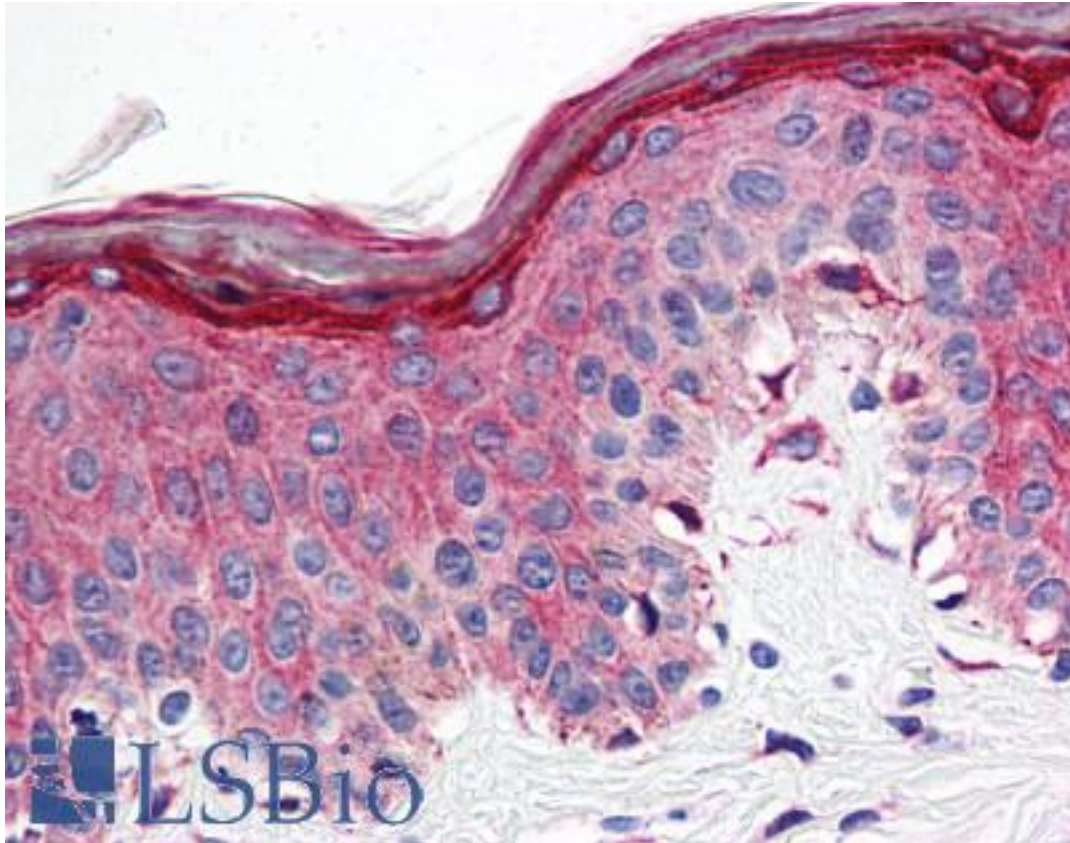


HTR1E / 5-HT1E Receptor Rabbit anti-Human Polyclonal (Cytoplasmic Domain) Antibody - LS-A2739 - LSBio

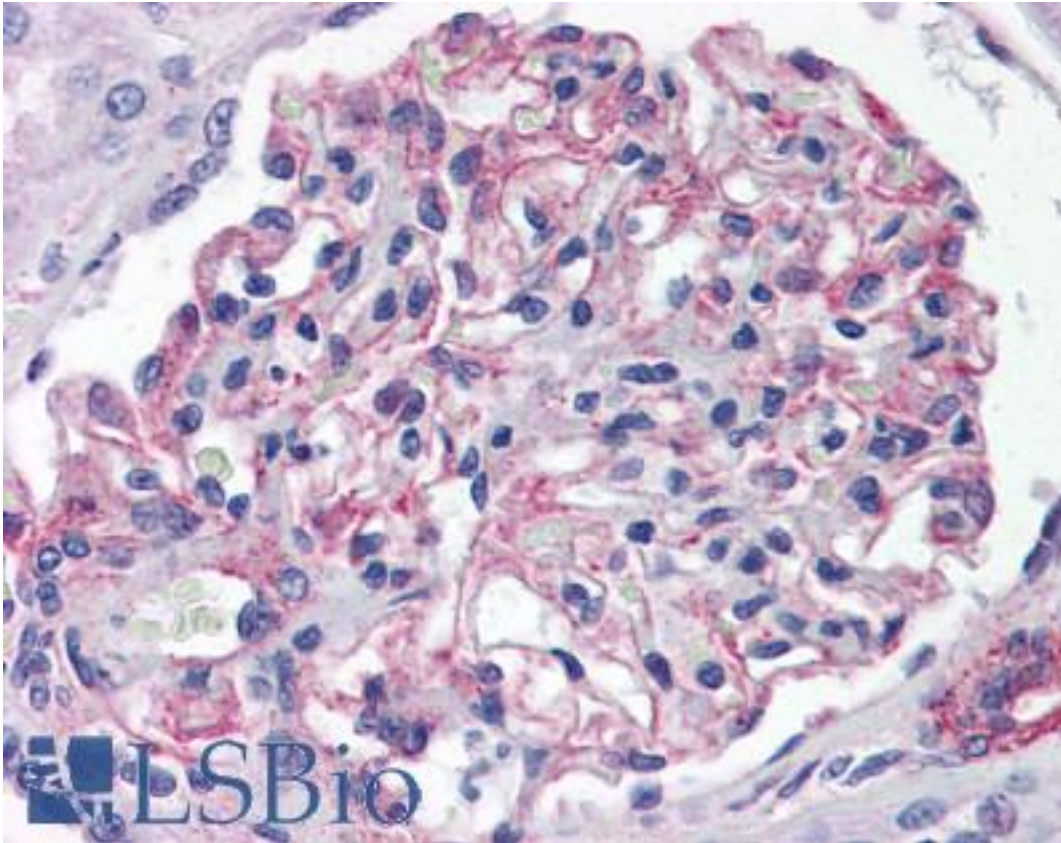
CatalogID:	LS-A2739
Target:	5-hydroxytryptamine (serotonin) receptor 1E, G protein-coupled (HTR1E)
Synonyms:	HTR1E Antibody, 5-HT1E Antibody, 5-HT1e receptor Antibody, 5-HT-1E Antibody, 5HT1E Receptor Antibody, HT1e receptor Antibody, S31 Antibody, Serotonin 5-HT-1e receptor Antibody, Serotonin 1e receptor Antibody, Serotonin receptor 1E Antibody
Family / Subfamily:	GPCR / Serotonin
Host	HTR1E antibody was produced in Rabbit
Clonality:	Polyclonal
Immunogen Species:	HTR1E / 5-HT1E Receptor antibody was raised against Human
Antigen Type:	Synthetic peptide
Immunogen:	HTR1E / 5-HT1E Receptor antibody was raised against synthetic 17 amino acid peptide from 3rd cytoplasmic domain of human 5HT1E Receptor. Percent identity with other species by BLAST analysis: Human, Chimpanzee, Gorilla, Orangutan, Gibbon, Monkey, Elephant, Panda, Bovine, Horse, Guinea pig, Turkey, Sparrow, Chicken, Lizard (100%); Bat, Opossum (94%); Stickleback, Zebrafish (88%).
Specificity:	Human 5HT1E Receptor. BLAST analysis of the peptide immunogen showed no homology with other human proteins, except HTR1F (65%).
Epitope:	Cytoplasmic Domain
Reactivity:	Human, Chimpanzee, Gorilla, Orangutan, Gibbon, Monkey, Bovine, Guinea pig, Horse, Chicken
Predicted Reactivity:	Bat
Purification:	Immunoaffinity purified
Presentation:	PBS, 0.1% sodium azide.
Recommended Storage:	Long term: -70°C; Short term: +4°C
Usage Summary:	Antigen retrieval requires Proteinase K treatment.
Uses:	IHC - Paraffin (10 µg/ml) (Optimal dilution to be determined by the researcher)
Size:	50 µg
Concentration:	1 mg/ml

Immunohistochemistry Image:



Anti-5HT1E Receptor antibody LS-A2739 IHC of human skin. Immunohistochemistry of formalin-fixed, paraffin-embedded tissue after heat-induced antigen retrieval.

Immunohistochemistry Image:



Anti-5HT1E Receptor antibody LS-A2739 IHC of human kidney. Immunohistochemistry of formalin-fixed, paraffin-embedded tissue after heat-induced antigen retrieval.

Requested From:

Japan

Laboratory Reagent For In Vitro Research Use Only

Not for resale without prior written consent from LifeSpan BioSciences, Inc.

Created on 9/23/2014

© 2014 LifeSpan BioSciences