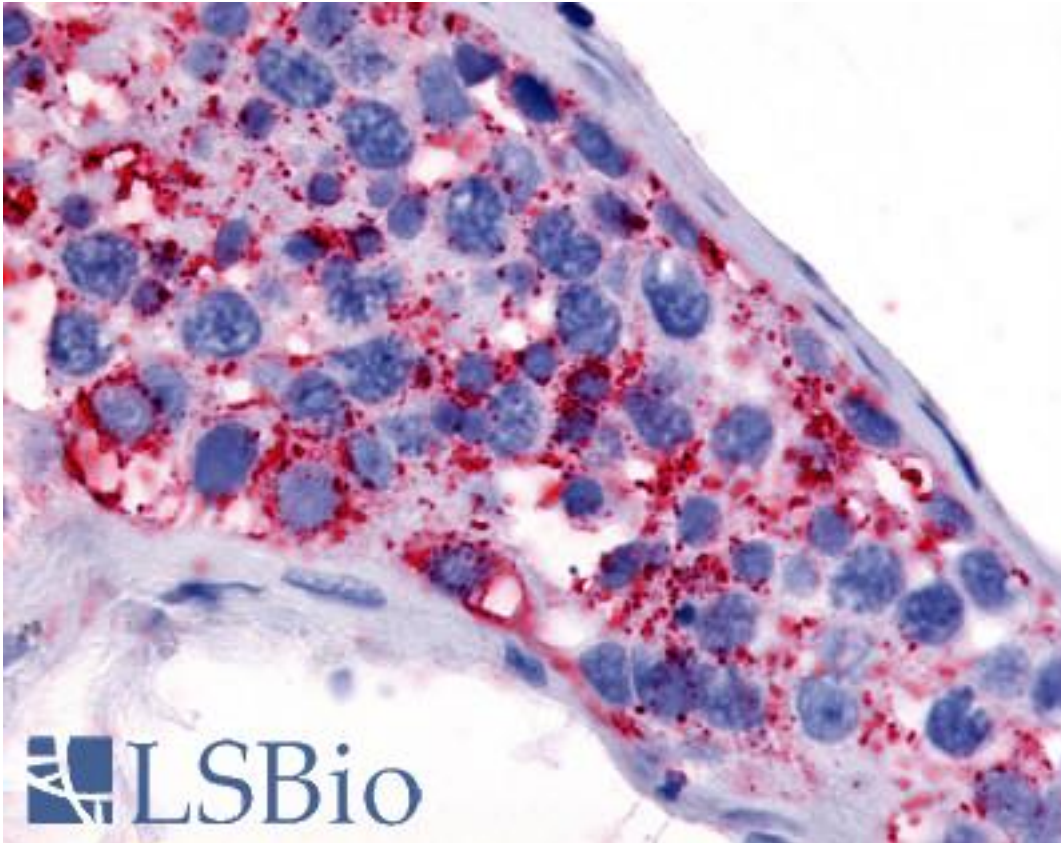


| HTR1E / 5-HT1E Receptor Rabbit anti-Human Polyclonal (Cytoplasmic Domain) Antibody - LS-A2738 - LSBio | |
|---|---|
| CatalogID: | LS-A2738 |
| Target: | 5-hydroxytryptamine (serotonin) receptor 1E, G protein-coupled (HTR1E) |
| Synonyms: | HTR1E Antibody, 5-HT1E Antibody, 5-HT1e receptor Antibody, 5-HT-1E Antibody, 5HT1E Receptor Antibody, HT1e receptor Antibody, S31 Antibody, Serotonin 5-HT-1e receptor Antibody, Serotonin 1e receptor Antibody, Serotonin receptor 1E Antibody |
| Family / Subfamily: | GPCR / Serotonin |
| Host | HTR1E antibody was produced in Rabbit |
| Clonality: | Polyclonal |
| Immunogen Species: | HTR1E / 5-HT1E Receptor antibody was raised against Human |
| Antigen Type: | Synthetic peptide |
| Immunogen: | HTR1E / 5-HT1E Receptor antibody was raised against synthetic 16 amino acid peptide from 3rd cytoplasmic domain of human 5HT1E Receptor. Percent identity with other species by BLAST analysis: Human, Chimpanzee, Gorilla, Orangutan, Gibbon, Monkey, Elephant, Bovine, Bat, Horse, Guinea pig (100%); Panda, Opossum, Turkey, Sparrow, Chicken (94%); Lizard (88%). |
| Specificity: | Human 5HT1E Receptor. BLAST analysis of the peptide immunogen showed no homology with other human proteins. |
| Epitope: | Cytoplasmic Domain |
| Reactivity: | Human, Chimpanzee, Gorilla, Orangutan, Gibbon, Monkey, Bat, Bovine, Guinea pig, Horse |
| Predicted Reactivity: | Chicken |
| Purification: | Immunoaffinity purified |
| Presentation: | PBS, 0.1% sodium azide. |
| Recommended Storage: | Long term: -70°C; Short term: +4°C |
| Uses: | IHC - Paraffin (16 - 24 µg/ml) (Optimal dilution to be determined by the researcher) |
| Size: | 50 µg |

Immunohistochemistry Image:



Anti-5HT1E Receptor antibody LS-A2738 IHC of human testis. Immunohistochemistry of formalin-fixed, paraffin-embedded tissue after heat-induced antigen retrieval.

Requested From:

Japan

Laboratory Reagent For In Vitro Research Use Only

Not for resale without prior written consent from LifeSpan BioSciences, Inc.

Created on 9/23/2014

© 2014 LifeSpan BioSciences