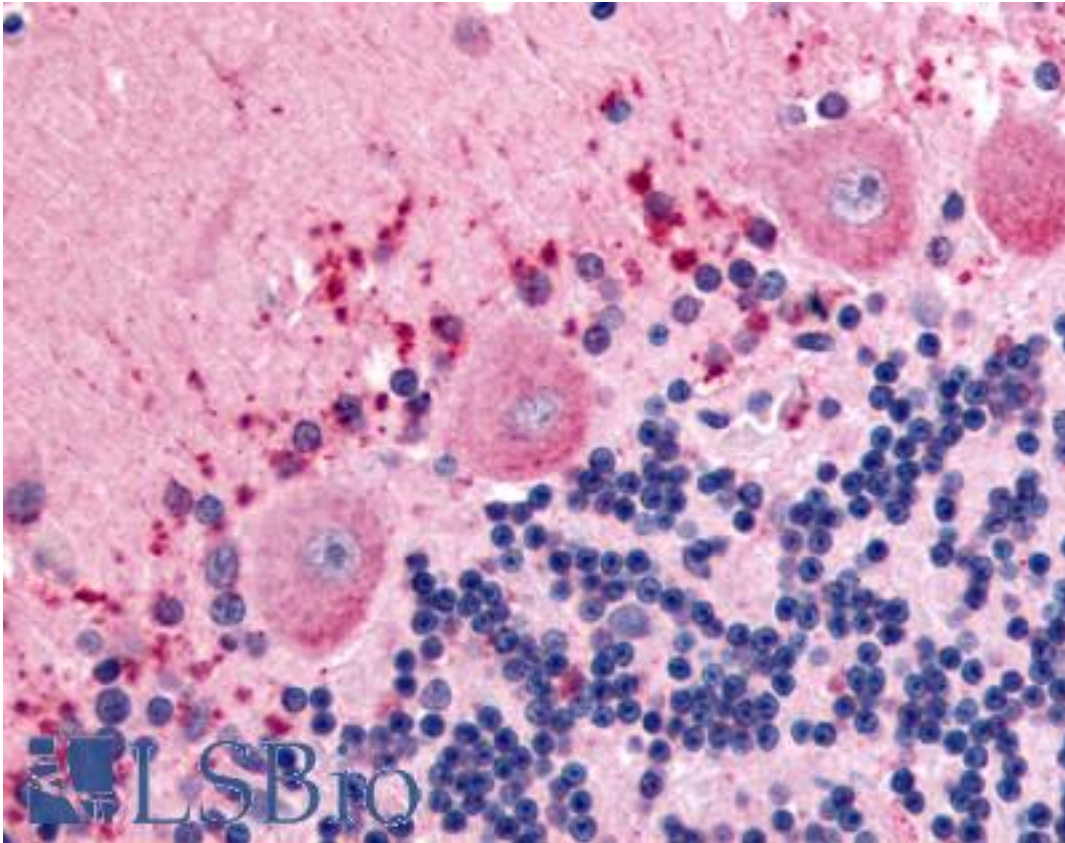


CELSR3 Rabbit anti-Human Polyclonal (N-Terminus) Antibody - LS-A2734 - LSBio

| | |
|-----------------------------|---|
| CatalogID: | LS-A2734 |
| Target: | cadherin, EGF LAG seven-pass G-type receptor 3 (CELSR3) |
| Synonyms: | CELSR3 Antibody, Anchor protein Antibody, Cadherin family member 11 Antibody, CDHF11 Antibody, EGF-like protein 1 Antibody, EGF-like-domain, multiple 1 Antibody, Epidermal growth factor-like 1 Antibody, Flamingo homolog 1 Antibody, FMI1 Antibody, KIAA0812 Antibody, MEGF2 Antibody, Megf3 Antibody, HFMI1 Antibody, Multiple EGF-like domains 2 Antibody, RESDA1 Antibody, EGFL1 Antibody |
| Family / Subfamily: | GPCR / Orphan-U |
| Host | CELSR3 antibody was produced in Rabbit |
| Clonality: | Polyclonal |
| Immunogen Species: | CELSR3 antibody was raised against Human |
| Antigen Type: | Synthetic peptide |
| Immunogen: | CELSR3 antibody was raised against synthetic 19 amino acid peptide from N-terminal extracellular domain of human CELSR3. Percent identity with other species by BLAST analysis: Human, Gorilla, Gibbon (100%); Monkey (89%); Marmoset (84%). |
| Specificity: | Human CELSR3. BLAST analysis of the peptide immunogen showed no homology with other human proteins. |
| Epitope: | N-Terminus |
| Reactivity: | Human, Gorilla, Gibbon |
| Purification: | Immunoaffinity purified |
| Presentation: | PBS, 0.1% sodium azide. |
| Recommended Storage: | Long term: -70°C; Short term: +4°C |
| Uses: | IHC - Paraffin (36 µg/ml) (Optimal dilution to be determined by the researcher) |
| Size: | 50 µg |
| Concentration: | 1 mg/ml |

Immunohistochemistry Image:



Anti-CELSR3 antibody LS-A2734 IHC of human brain, Purkinje neurons.
Immunohistochemistry of formalin-fixed, paraffin-embedded tissue after heat-induced antigen retrieval.

Requested From:

Japan

Laboratory Reagent For In Vitro Research Use Only

Not for resale without prior written consent from LifeSpan BioSciences, Inc.

Created on 9/23/2014

© 2014 LifeSpan BioSciences